

MDE 120

Series general data MDE



MANUFACTURING FEATURES:

- Polypropylene housing for MDE 120 model.
- Welded rolled steel sheet housing for sizes 130 to 150.
- Galvanised steel sheet single inlet forward curved impeller.
- Inlet protection guard included.
- Epoxy powder finishing coat.
- Asynchronous external rotor with IP-44 protection and Class B insulation according to the DIN 40.050 h1 Standard; ball bearings greased for life. Standard voltages: 230V 50Hz.

APPLICATIONS:

- Designed for inline installation, they are suitable for:
- Industrial applications, extraction or injection of air.
 - Cooling of machines and parts.
 - Clean air transport.
 - Maximum working temperature: 50°C.

Series accessories MDE



INT

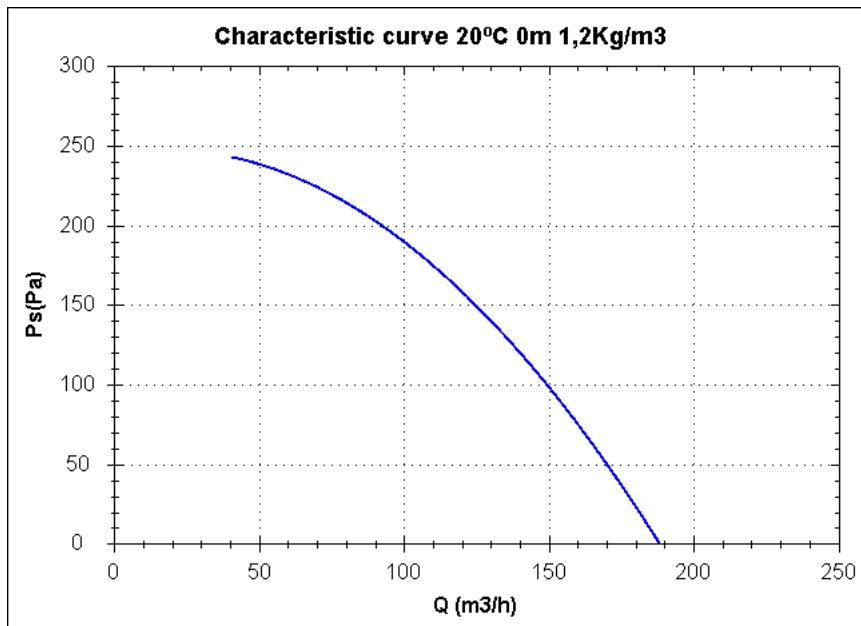


PE



REG

Characteristic curve



Design point

Q (m ³ /h)	
Ps(Pa)	

Service point

Impeller rpm	
Max. temp.(°C)	
Q (m ³ /h)	
Ps(Pa)	
Pd(Pa)	
Pt(Pa)	
Air speed(m/s)	

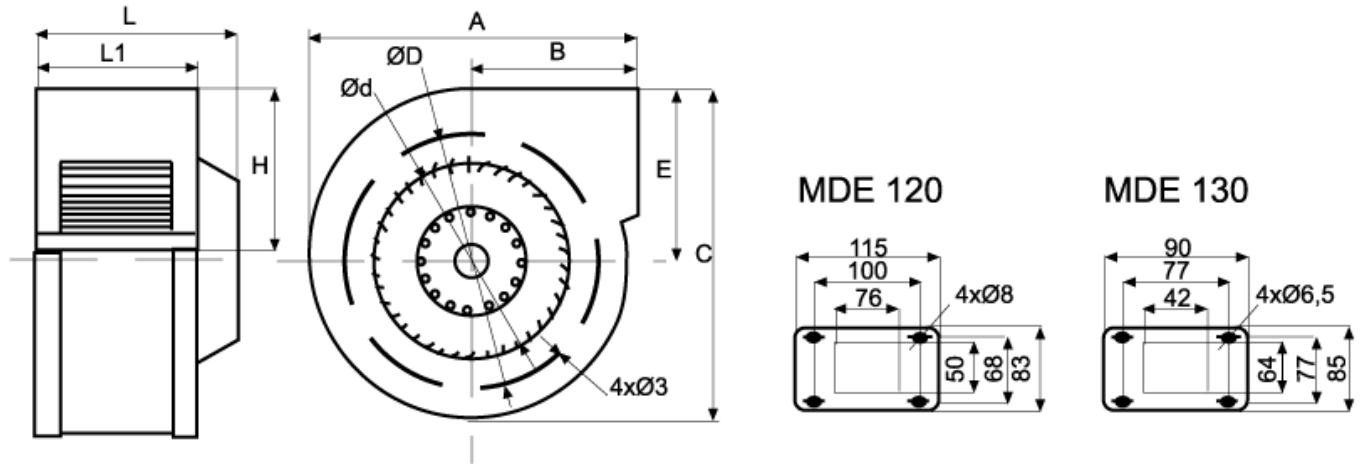
Technical data

Impeller rpm	2930
Motor rpm	2930
Approx. weight(kg)	2,4
Maximum flow rate(m ³ /h)	189

Power(kW)	0,065
Imax 230V(A)	-
Imax 400V(A)	-
Imax 690V(A)	-

MDE 120

dimensions diagram



Dimensions (mm)

A=175	B=82	C=184	d=100	D=132	E=98	H=50	L=98	L1=76
-------	------	-------	-------	-------	------	------	------	-------

MDE 130

Series general data MDE



MANUFACTURING FEATURES:

- Polypropylene housing for MDE 120 model.
- Welded rolled steel sheet housing for sizes 130 to 150.
- Galvanised steel sheet single inlet forward curved impeller.
- Inlet protection guard included.
- Epoxy powder finishing coat.
- Asynchronous external rotor with IP-44 protection and Class B insulation according to the DIN 40.050 h1 Standard; ball bearings greased for life. Standard voltages: 230V 50Hz.

APPLICATIONS:

- Designed for inline installation, they are suitable for:
- Industrial applications, extraction or injection of air.
 - Cooling of machines and parts.
 - Clean air transport.
 - Maximum working temperature: 50°C.

Series accessories MDE



INT

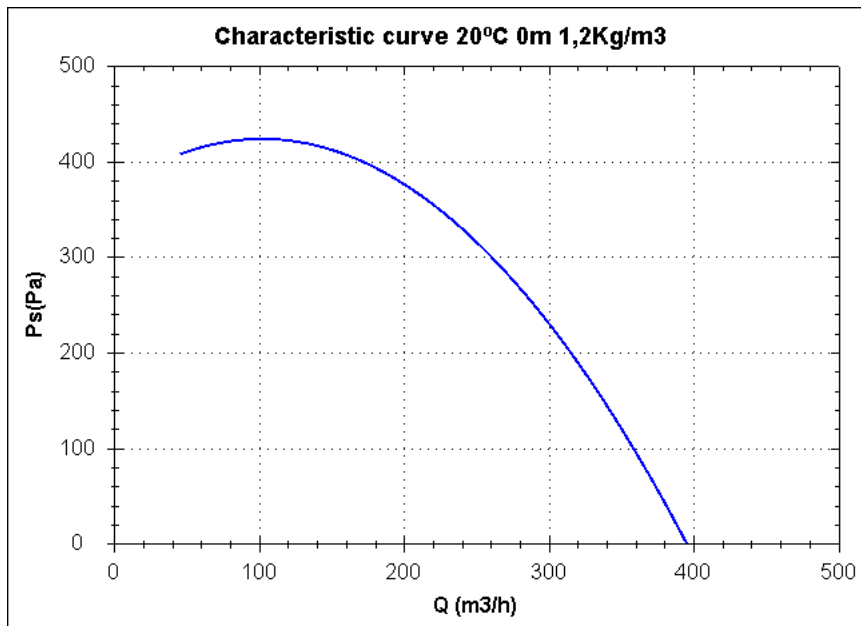


PE



REG

Characteristic curve



Design point

Q (m ³ /h)	
Ps(Pa)	

Service point

Impeller rpm	
Max. temp.(°C)	
Q (m ³ /h)	
Ps(Pa)	
Pd(Pa)	
Pt(Pa)	
Air speed(m/s)	

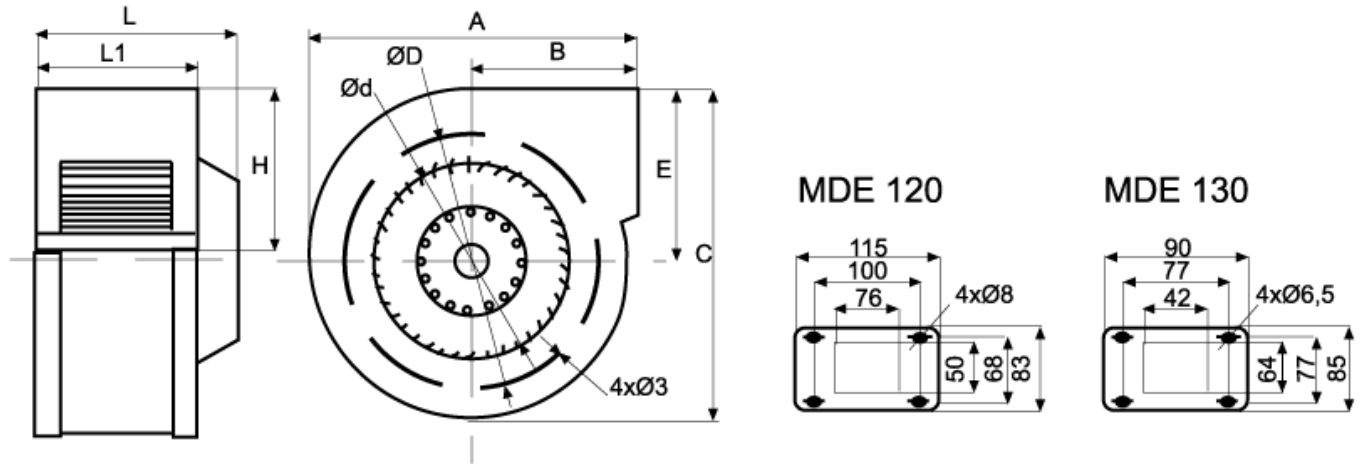
Technical data

Impeller rpm	2890
Motor rpm	2890
Approx. weight(kg)	3
Maximum flow rate(m ³ /h)	396

Power(kW)	0,12
Imax 230V(A)	-
Imax 400V(A)	-
Imax 690V(A)	-

MDE 130

dimensions diagram



Dimensions (mm)

A=175	B=88	C=182	d=110	D=140	E=100	H=67	L=68	L1=47
-------	------	-------	-------	-------	-------	------	------	-------

MDE 150

Series general data MDE



MANUFACTURING FEATURES:

- Polypropylene housing for MDE 120 model.
- Welded rolled steel sheet housing for sizes 130 to 150.
- Galvanised steel sheet single inlet forward curved impeller.
- Inlet protection guard included.
- Epoxy powder finishing coat.
- Asynchronous external rotor with IP-44 protection and Class B insulation according to the DIN 40.050 h1 Standard; ball bearings greased for life. Standard voltages: 230V 50Hz.

APPLICATIONS:

- Designed for inline installation, they are suitable for:
- Industrial applications, extraction or injection of air.
 - Cooling of machines and parts.
 - Clean air transport.
 - Maximum working temperature: 50°C.

Series accessories MDE



INT

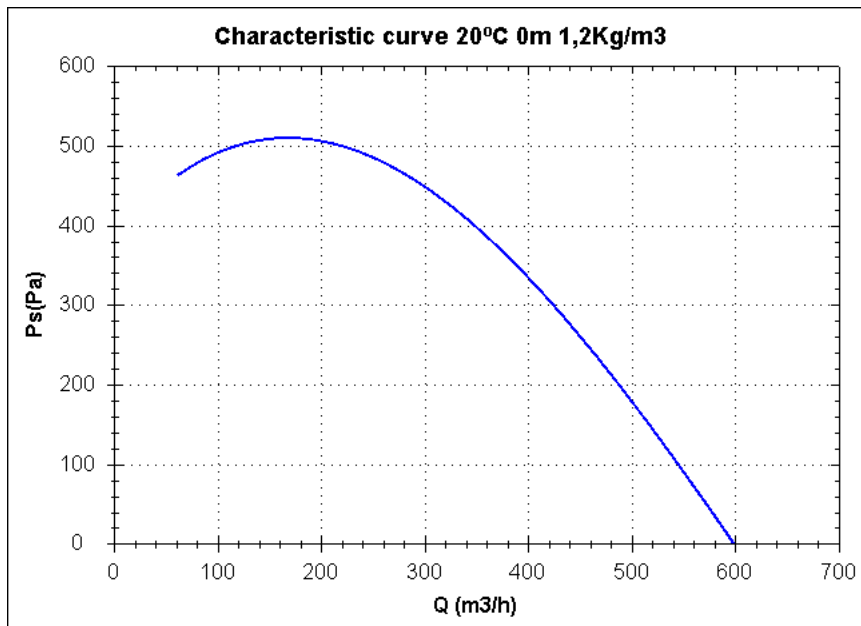


PE



REG

Characteristic curve



Design point

Q (m ³ /h)	
Ps(Pa)	

Service point

Impeller rpm	
Max. temp.(°C)	
Q (m ³ /h)	
Ps(Pa)	
Pd(Pa)	
Pt(Pa)	
Air speed(m/s)	

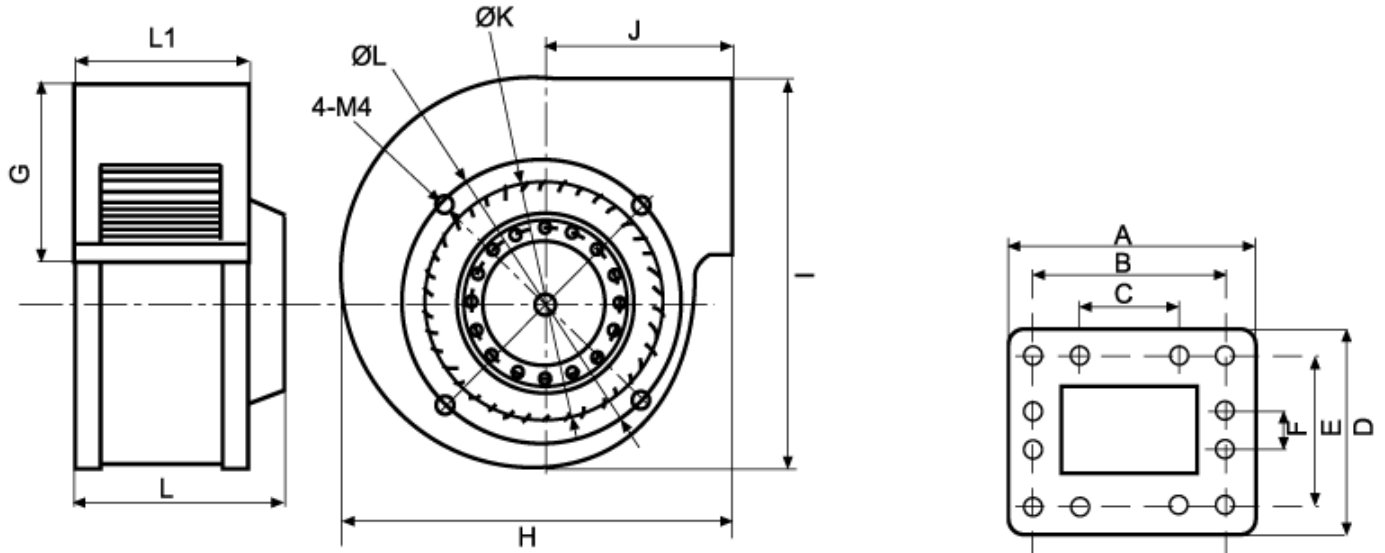
Technical data

Impeller rpm	2900
Motor rpm	2900
Approx. weight(kg)	3,4
Maximum flow rate(m ³ /h)	600

Power(kW)	0,24
Imax 230V(A)	-
Imax 400V(A)	-
Imax 690V(A)	-

MDE 150

dimensions diagram



Dimensions (mm)

A=118	B=102	C=50	D=115	E=102	F=50	G=88	H=205	I=208	J=98	KØ=124	L=124
L1=88	LØ=160										