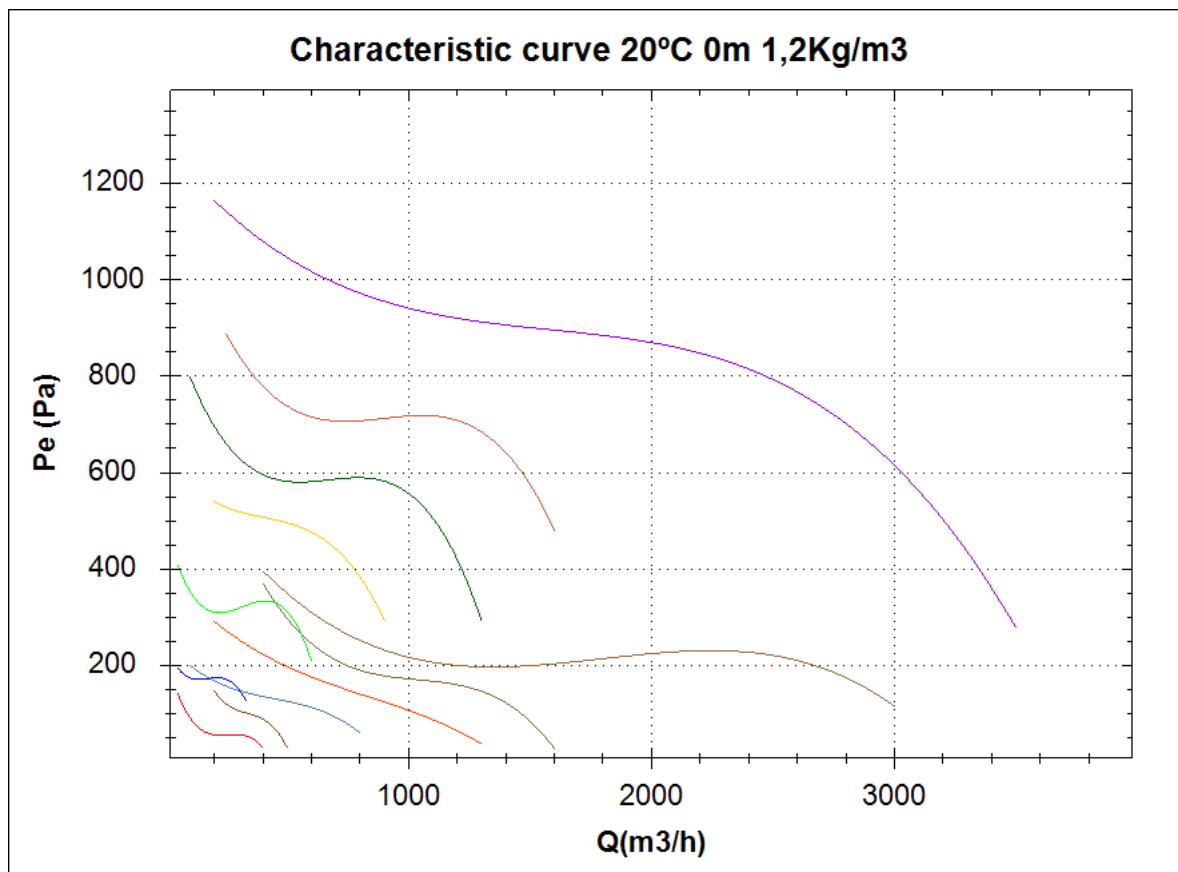


Comparative

Design point

Q (m3/h)	
Ps(Pa)	



		Model	Q(m3/h)	P (Pa)
1	MDI 10/5 M2 0,09kW			
2	MDI 13/6 M2 0,18kW			
3	MDI 13/6 M4 0,12kW			
4	MDI 13/8 M2 0,37kW			
5	MDI 13/8 M4 0,12kW			
6	MDI 16/8 M2 0,25kW			
7	MDI 16/8 M4 0,12kW			
8	MDI 18/8 M2 0,55kW			
9	MDI 18/8 M4 0,18kW			
10	MDI 20/10 M2 1,1kW			
11	MDI 20/10 M4 0,25kW			
12	MDI 25/13 M4 0,55kW			

MDI 10/5 M2 0,09kW

Series general data MDI



MANUFACTURING FEATURES:

- Welded stainless steel AISI 304 housing.
- Stainless steel single inlet forward curved impeller.
- Standard asynchronous squirrel-cage motor with IP-55 protection and Class F insulation. Manufactured with standard voltages: 230V 50Hz in single phase motors and 230/400V 50Hz in three phase motors.

APPLICATIONS:

Designed for inline installation, they are suitable for:

- Industrial applications, extraction or injection of air.
- Cooling of machines and parts.
- Clean air transport.
- Corrosive air transport.
- Maximum working temperature: carried air: 130°C, ambient 1ph 50°C, 3ph 60°C.

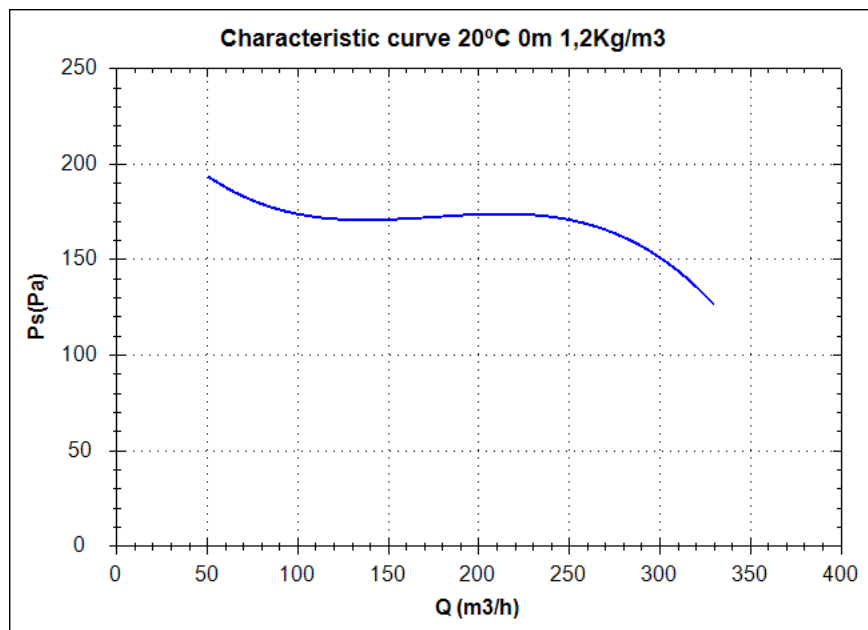
UNDER REQUEST:

- 60Hz fans and special voltages.
- 2 speed motors.
- Flameproof and explosionproof fans with ATEX certified motors.
- Fans provided with cooling disk for high temperatures.

Series accessories MDI



Characteristic curve



Design point

Q (m³/h)	
Ps(Pa)	

Service point

Impeller rpm	
Max. temp.(°C)	
Q (m³/h)	
Ps(Pa)	
Pd(Pa)	
Pt(Pa)	
Air speed(m/s)	

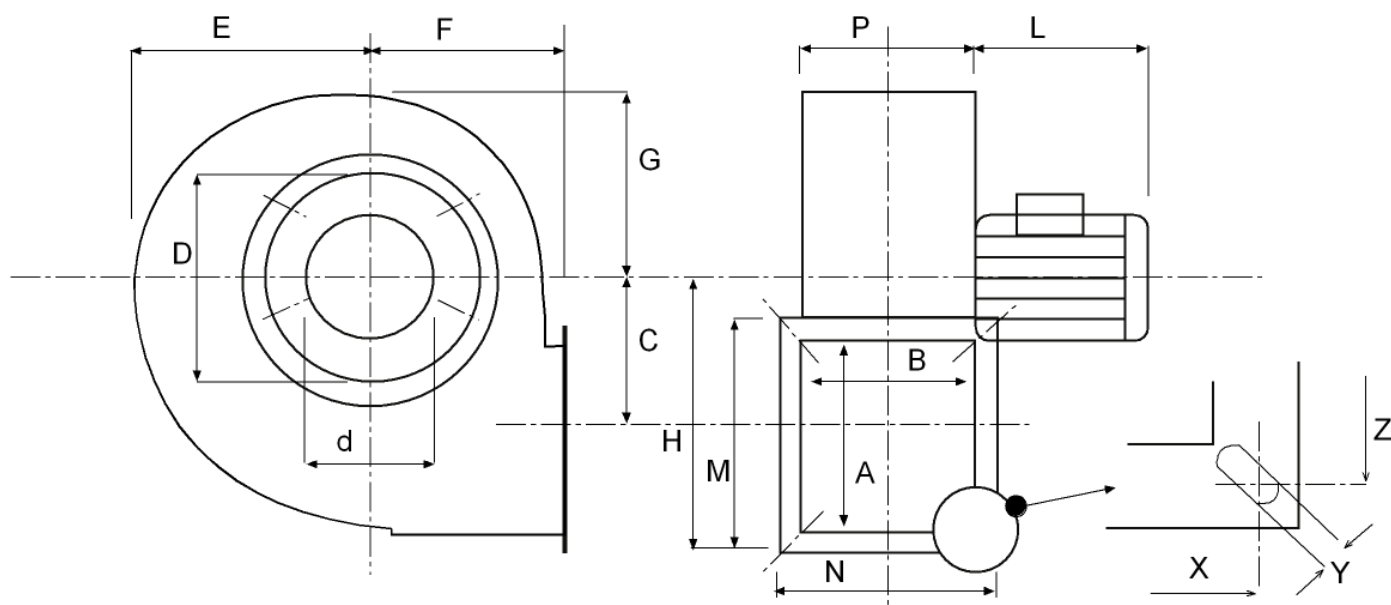
Technical data

Impeller rpm	2760
Motor rpm	2760
Approx. weight(kg)	2,4
Maximum flow rate(m³/h)	370

Power(kW)	0,09
Imax 230V(A)	0,81
Imax 400V(A)	-
Imax 690V(A)	-

MDI 10/5 M2 0,09kW

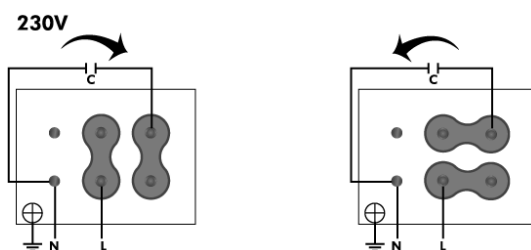
dimensions diagram



Dimensions (mm)

A=70	B=70	C=65	D=115	d=75	E=90	F=80	G=77	H=120	L=165	M=100	N=100
P=72	X=85	Y=7X14	Z=85								

Wiring diagram



MDI 13/6 M2 0,18kW

Series general data MDI



MANUFACTURING FEATURES:

- Welded stainless steel AISI 304 housing.
- Stainless steel single inlet forward curved impeller.
- Standard asynchronous squirrel-cage motor with IP-55 protection and Class F insulation. Manufactured with standard voltages: 230V 50Hz in single phase motors and 230/400V 50Hz in three phase motors.

APPLICATIONS:

Designed for inline installation, they are suitable for:

- Industrial applications, extraction or injection of air.
- Cooling of machines and parts.
- Clean air transport.
- Corrosive air transport.
- Maximum working temperature: carried air: 130°C, ambient 1ph 50°C, 3ph 60°C.

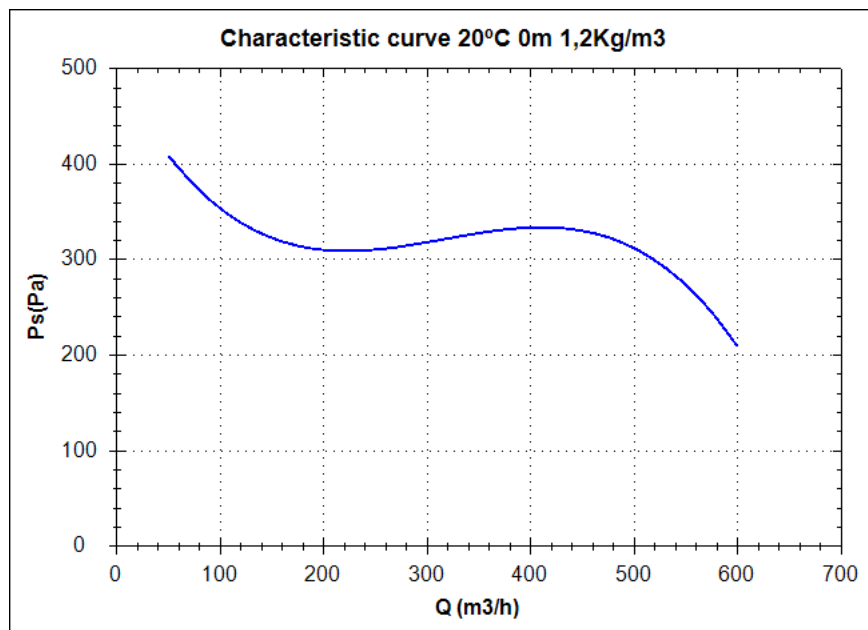
UNDER REQUEST:

- 60Hz fans and special voltages.
- 2 speed motors.
- Flameproof and explosionproof fans with ATEX certified motors.
- Fans provided with cooling disk for high temperatures.

Series accessories MDI



Characteristic curve



Design point

Q (m³/h)	
Ps(Pa)	

Service point

Impeller rpm	
Max. temp.(°C)	
Q (m³/h)	
Ps(Pa)	
Pd(Pa)	
Pt(Pa)	
Air speed(m/s)	

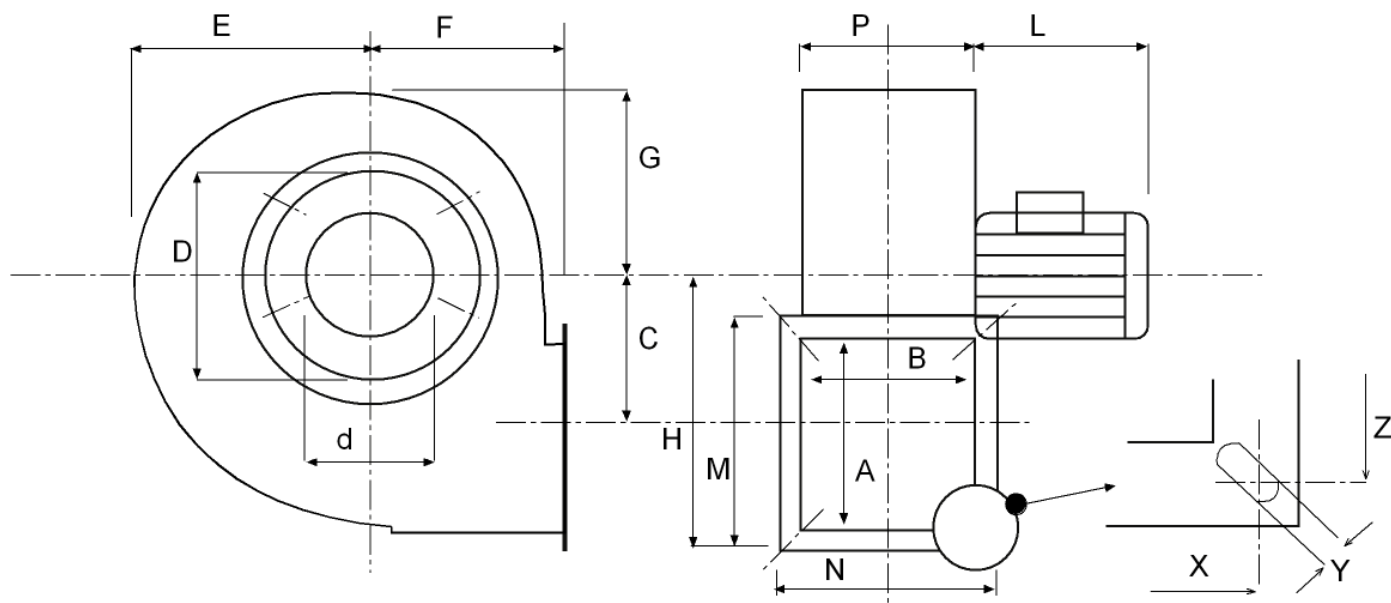
Technical data

Impeller rpm	2800
Motor rpm	2800
Approx. weight(kg)	5,3
Maximum flow rate(m³/h)	508

Power(kW)	0,18
Imax 230V(A)	1,48
Imax 400V(A)	-
Imax 690V(A)	-

MDI 13/6 M2 0,18kW

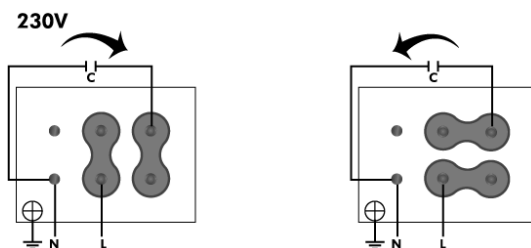
dimensions diagram



Dimensions (mm)

A=90	B=90	C=92	D=158	d=101	E=125	F=104	G=110	H=160	L=190	M=130	N=130
P=92	X=110	Y=9X16	Z=110								

Wiring diagram



MDI 13/6 M4 0,12kW

Series general data MDI



MANUFACTURING FEATURES:

- Welded stainless steel AISI 304 housing.
- Stainless steel single inlet forward curved impeller.
- Standard asynchronous squirrel-cage motor with IP-55 protection and Class F insulation. Manufactured with standard voltages: 230V 50Hz in single phase motors and 230/400V 50Hz in three phase motors.

APPLICATIONS:

Designed for inline installation, they are suitable for:

- Industrial applications, extraction or injection of air.
- Cooling of machines and parts.
- Clean air transport.
- Corrosive air transport.
- Maximum working temperature: carried air: 130°C, ambient 1ph 50°C, 3ph 60°C.

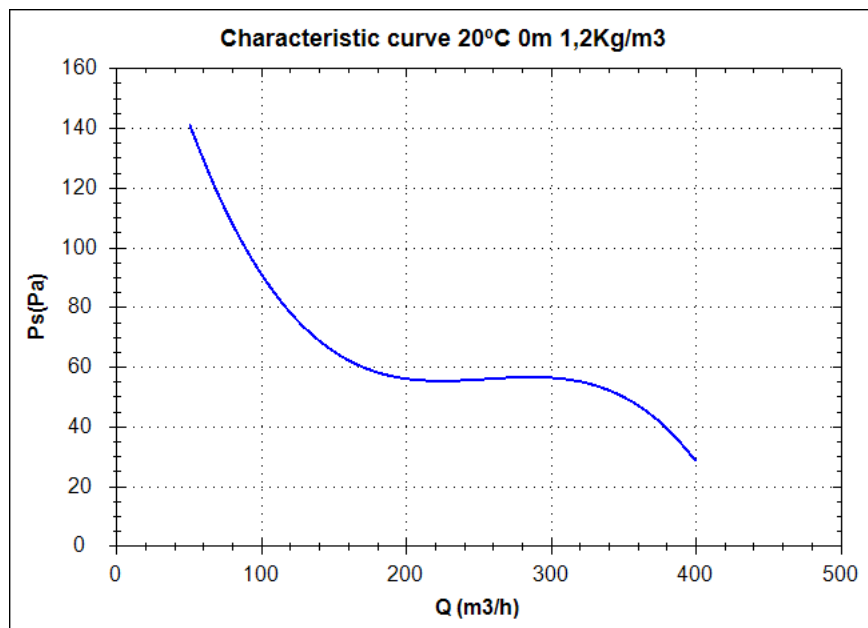
UNDER REQUEST:

- 60Hz fans and special voltages.
- 2 speed motors.
- Flameproof and explosionproof fans with ATEX certified motors.
- Fans provided with cooling disk for high temperatures.

Series accessories MDI



Characteristic curve



Design point

Q (m³/h)	
Ps(Pa)	

Service point

Impeller rpm	
Max. temp.(°C)	
Q (m³/h)	
Ps(Pa)	
Pd(Pa)	
Pt(Pa)	
Air speed(m/s)	

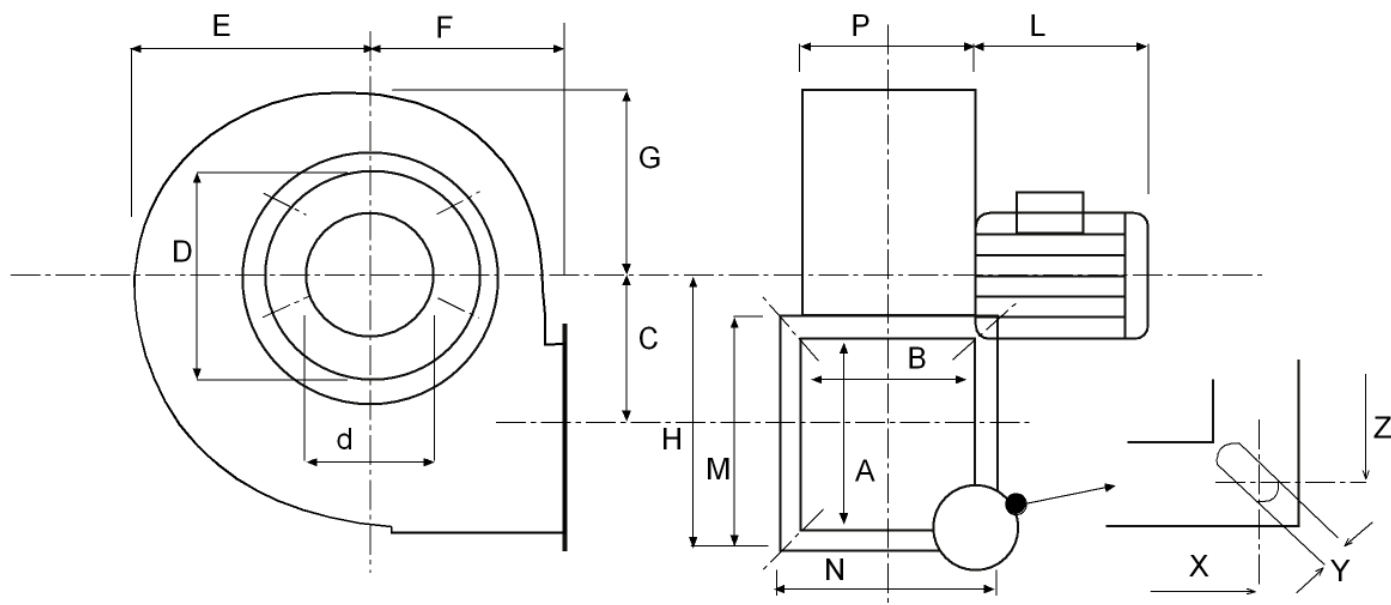
Technical data

Impeller rpm	1400
Motor rpm	1400
Approx. weight(kg)	4,9
Maximum flow rate(m³/h)	416

Power(kW)	0,12
Imax 230V(A)	1,1
Imax 400V(A)	-
Imax 690V(A)	-

MDI 13/6 M4 0,12kW

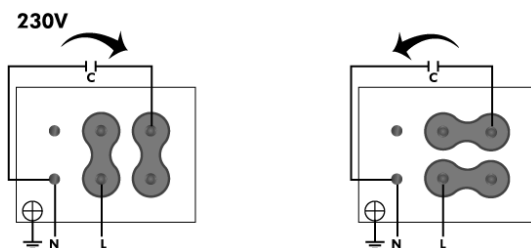
dimensions diagram



Dimensions (mm)

A=90	B=90	C=92	D=158	d=101	E=125	F=104	G=110	H=160	L=190	M=130	N=130
P=92	X=110	Y=9X16	Z=110								

Wiring diagram



MDI 13/8 M2 0,37kW

Series general data MDI



MANUFACTURING FEATURES:

- Welded stainless steel AISI 304 housing.
- Stainless steel single inlet forward curved impeller.
- Standard asynchronous squirrel-cage motor with IP-55 protection and Class F insulation. Manufactured with standard voltages: 230V 50Hz in single phase motors and 230/400V 50Hz in three phase motors.

APPLICATIONS:

Designed for inline installation, they are suitable for:

- Industrial applications, extraction or injection of air.
- Cooling of machines and parts.
- Clean air transport.
- Corrosive air transport.
- Maximum working temperature: carried air: 130°C, ambient 1ph 50°C, 3ph 60°C.

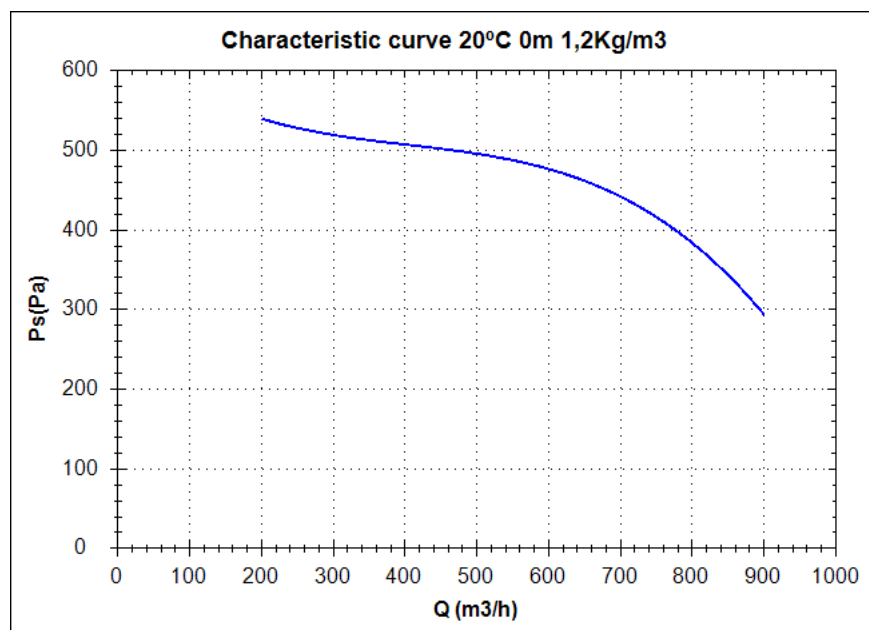
UNDER REQUEST:

- 60Hz fans and special voltages.
- 2 speed motors.
- Flameproof and explosionproof fans with ATEX certified motors.
- Fans provided with cooling disk for high temperatures.

Series accessories MDI



Characteristic curve



Design point

Q (m³/h)	
Ps(Pa)	

Service point

Impeller rpm	
Max. temp.(°C)	
Q (m³/h)	
Ps(Pa)	
Pd(Pa)	
Pt(Pa)	
Air speed(m/s)	

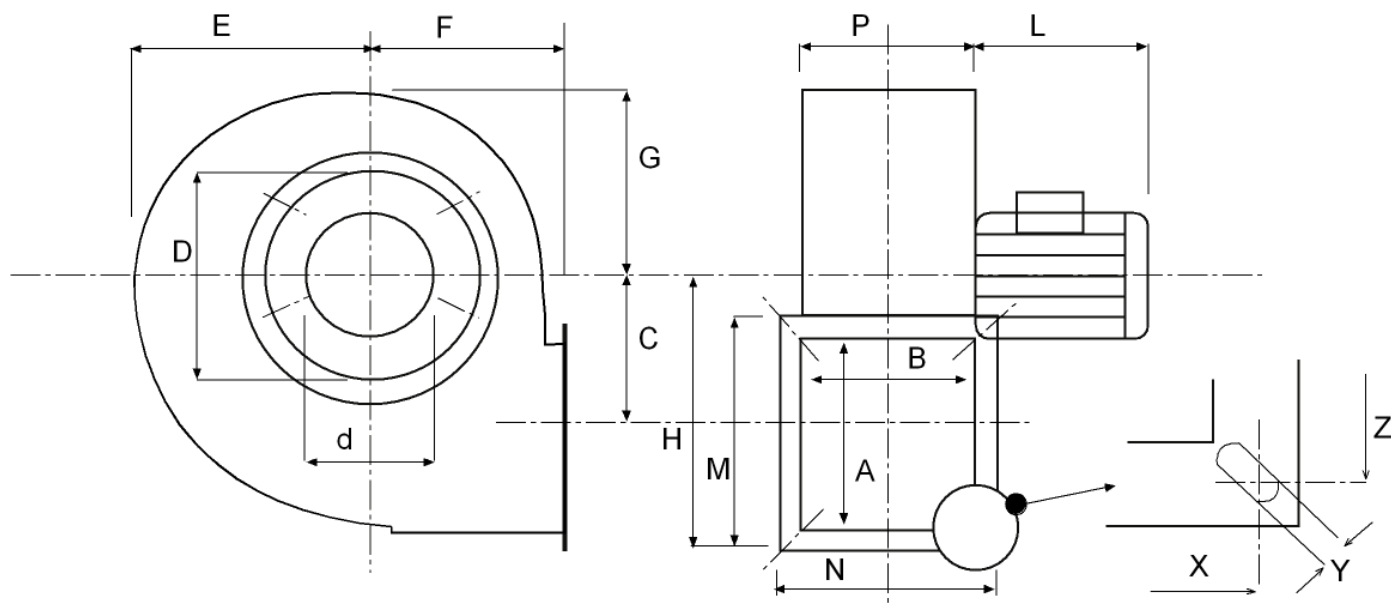
Technical data

Impeller rpm	2800
Motor rpm	2800
Approx. weight(kg)	9,4
Maximum flow rate(m³/h)	1275

Power(kW)	0,37
Imax 230V(A)	2,73
Imax 400V(A)	-
Imax 690V(A)	-

MDI 13/8 M2 0,37kW

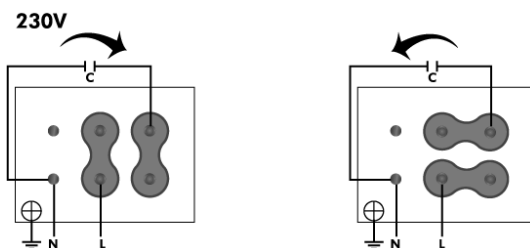
dimensions diagram



Dimensions (mm)

A=90	B=110	C=92	D=158	d=101	E=125	F=104	G=110	H=160	M=130	N=150	P=112
X=130	Y=9X16	Z=110									

Wiring diagram



MDI 13/8 M4 0,12kW

Series general data MDI



MANUFACTURING FEATURES:

- Welded stainless steel AISI 304 housing.
- Stainless steel single inlet forward curved impeller.
- Standard asynchronous squirrel-cage motor with IP-55 protection and Class F insulation. Manufactured with standard voltages: 230V 50Hz in single phase motors and 230/400V 50Hz in three phase motors.

APPLICATIONS:

Designed for inline installation, they are suitable for:

- Industrial applications, extraction or injection of air.
- Cooling of machines and parts.
- Clean air transport.
- Corrosive air transport.
- Maximum working temperature: carried air: 130°C, ambient 1ph 50°C, 3ph 60°C.

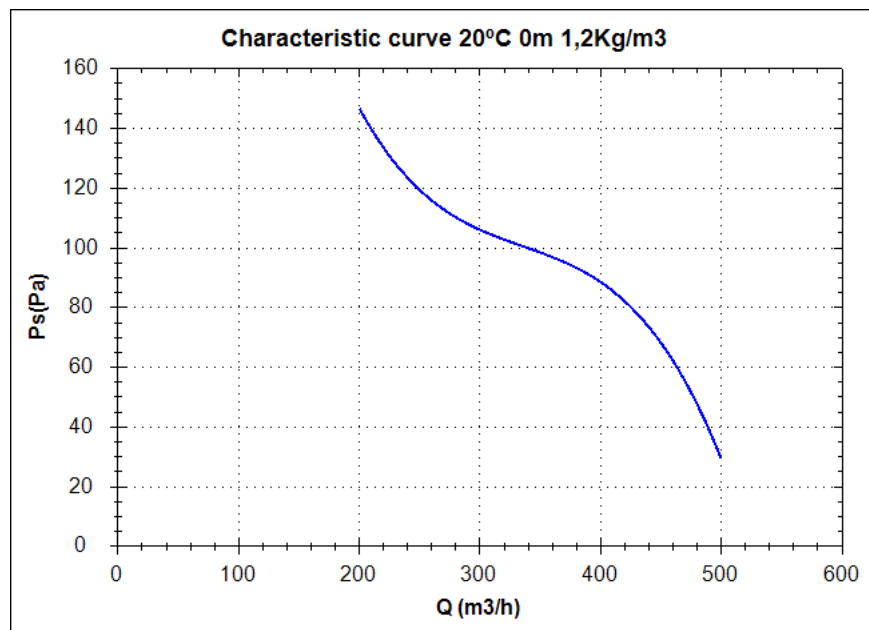
UNDER REQUEST:

- 60Hz fans and special voltages.
- 2 speed motors.
- Flameproof and explosionproof fans with ATEX certified motors.
- Fans provided with cooling disk for high temperatures.

Series accessories MDI



Characteristic curve



Design point

Q (m³/h)	
Ps(Pa)	

Service point

Impeller rpm	
Max. temp.(°C)	
Q (m³/h)	
Ps(Pa)	
Pd(Pa)	
Pt(Pa)	
Air speed(m/s)	

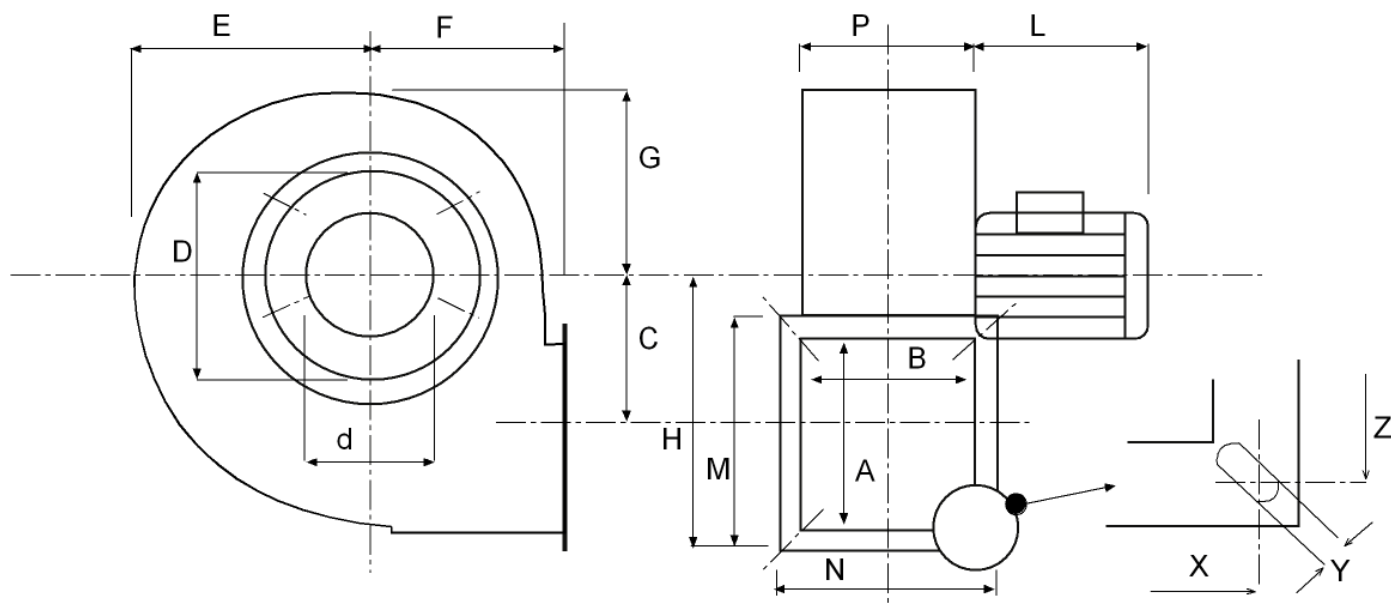
Technical data

Impeller rpm	1400
Motor rpm	1400
Approx. weight(kg)	5,8
Maximum flow rate(m³/h)	500

Power(kW)	0,12
Imax 230V(A)	1,1
Imax 400V(A)	-
Imax 690V(A)	-

MDI 13/8 M4 0,12kW

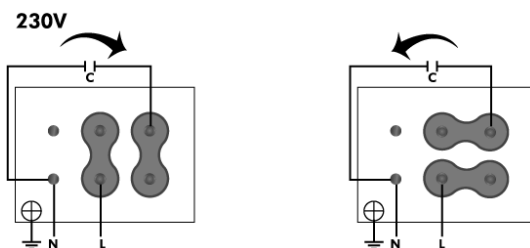
dimensions diagram



Dimensions (mm)

A=90	B=110	C=92	D=158	d=101	E=125	F=104	G=110	H=160	L=190	M=130	N=150
P=112	X=130	Y=9X16	Z=110								

Wiring diagram



MDI 16/8 M2 0,25kW

Series general data MDI



MANUFACTURING FEATURES:

- Welded stainless steel AISI 304 housing.
- Stainless steel single inlet forward curved impeller.
- Standard asynchronous squirrel-cage motor with IP-55 protection and Class F insulation. Manufactured with standard voltages: 230V 50Hz in single phase motors and 230/400V 50Hz in three phase motors.

APPLICATIONS:

Designed for inline installation, they are suitable for:

- Industrial applications, extraction or injection of air.
- Cooling of machines and parts.
- Clean air transport.
- Corrosive air transport.
- Maximum working temperature: carried air: 130°C, ambient 1ph 50°C, 3ph 60°C.

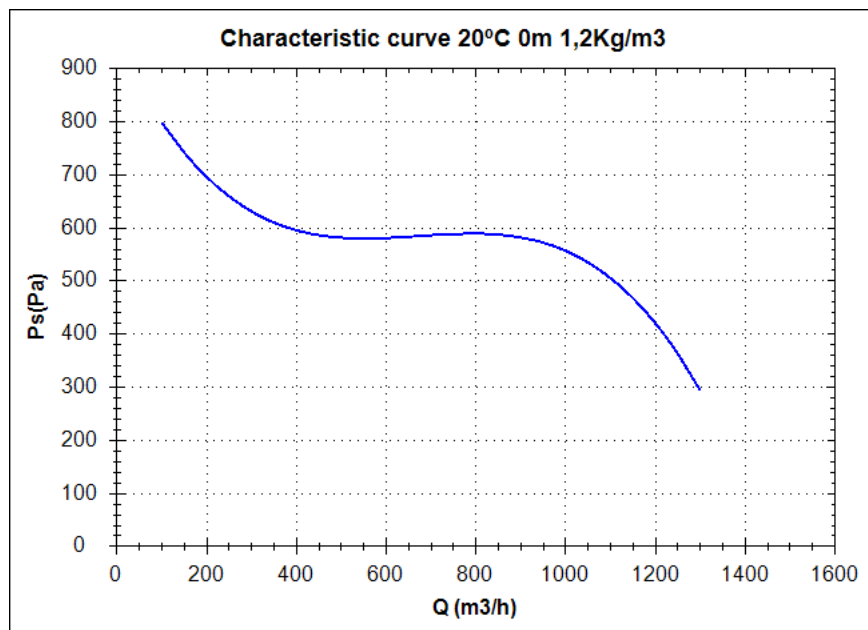
UNDER REQUEST:

- 60Hz fans and special voltages.
- 2 speed motors.
- Flameproof and explosionproof fans with ATEX certified motors.
- Fans provided with cooling disk for high temperatures.

Series accessories MDI



Characteristic curve



Design point

Q (m³/h)	
Ps(Pa)	

Service point

Impeller rpm	
Max. temp.(°C)	
Q (m³/h)	
Ps(Pa)	
Pd(Pa)	
Pt(Pa)	
Air speed(m/s)	

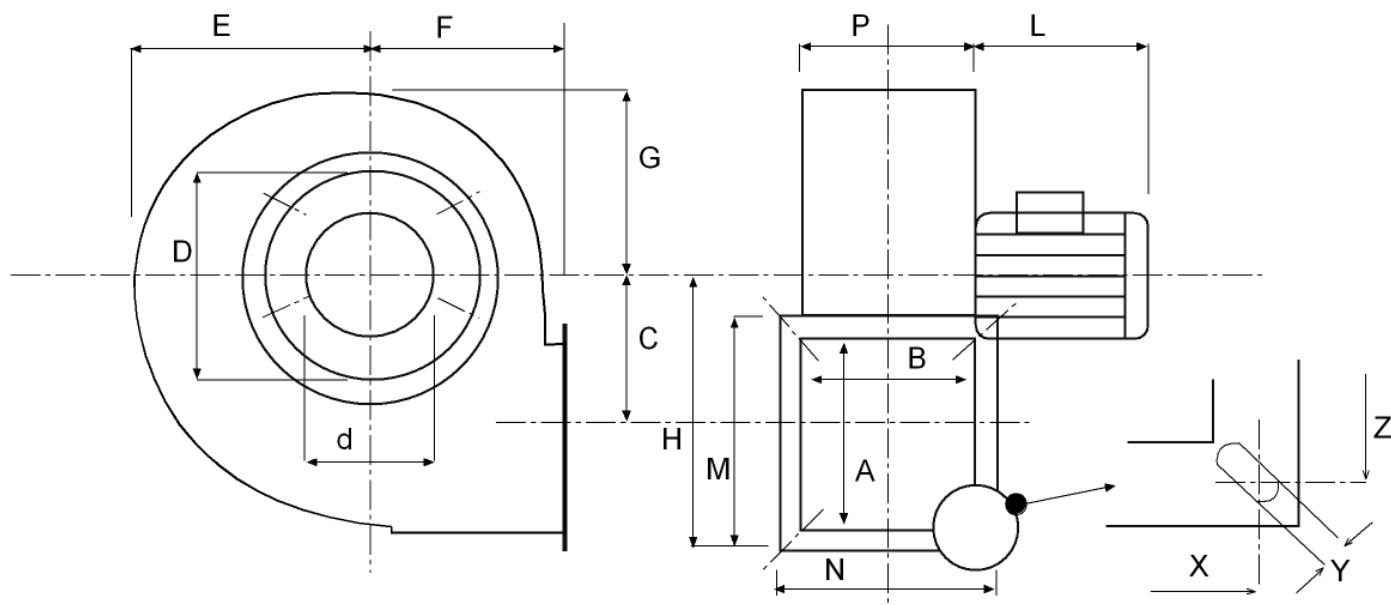
Technical data

Impeller rpm	2800
Motor rpm	2800
Approx. weight(kg)	6,2
Maximum flow rate(m³/h)	900

Power(kW)	0,25
Imax 230V(A)	1,96
Imax 400V(A)	-
Imax 690V(A)	-

MDI 16/8 M2 0,25kW

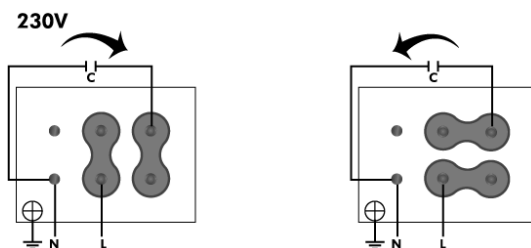
dimensions diagram



Dimensions (mm)

A=90	B=110	C=92	D=158	d=101	E=125	F=104	G=110	H=160	L=190	M=130	N=150
P=112	X=130	Y=9x16	Z=110								

Wiring diagram



MDI 16/8 M4 0,12kW

Series general data MDI



MANUFACTURING FEATURES:

- Welded stainless steel AISI 304 housing.
- Stainless steel single inlet forward curved impeller.
- Standard asynchronous squirrel-cage motor with IP-55 protection and Class F insulation. Manufactured with standard voltages: 230V 50Hz in single phase motors and 230/400V 50Hz in three phase motors.

APPLICATIONS:

Designed for inline installation, they are suitable for:

- Industrial applications, extraction or injection of air.
- Cooling of machines and parts.
- Clean air transport.
- Corrosive air transport.
- Maximum working temperature: carried air: 130°C, ambient 1ph 50°C, 3ph 60°C.

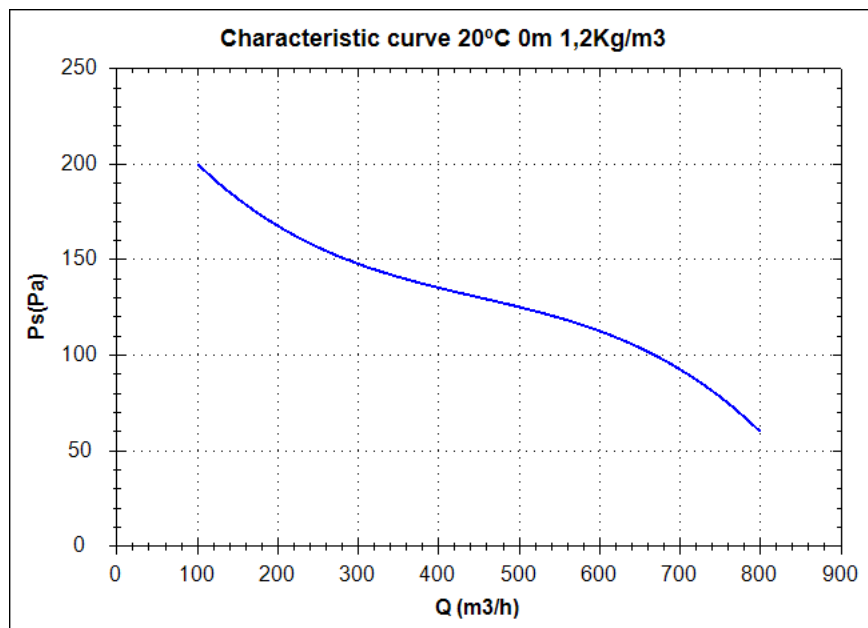
UNDER REQUEST:

- 60Hz fans and special voltages.
- 2 speed motors.
- Flameproof and explosionproof fans with ATEX certified motors.
- Fans provided with cooling disk for high temperatures.

Series accessories MDI



Characteristic curve



Design point

Q (m³/h)	
Ps(Pa)	

Service point

Impeller rpm	
Max. temp.(°C)	
Q (m³/h)	
Ps(Pa)	
Pd(Pa)	
Pt(Pa)	
Air speed(m/s)	

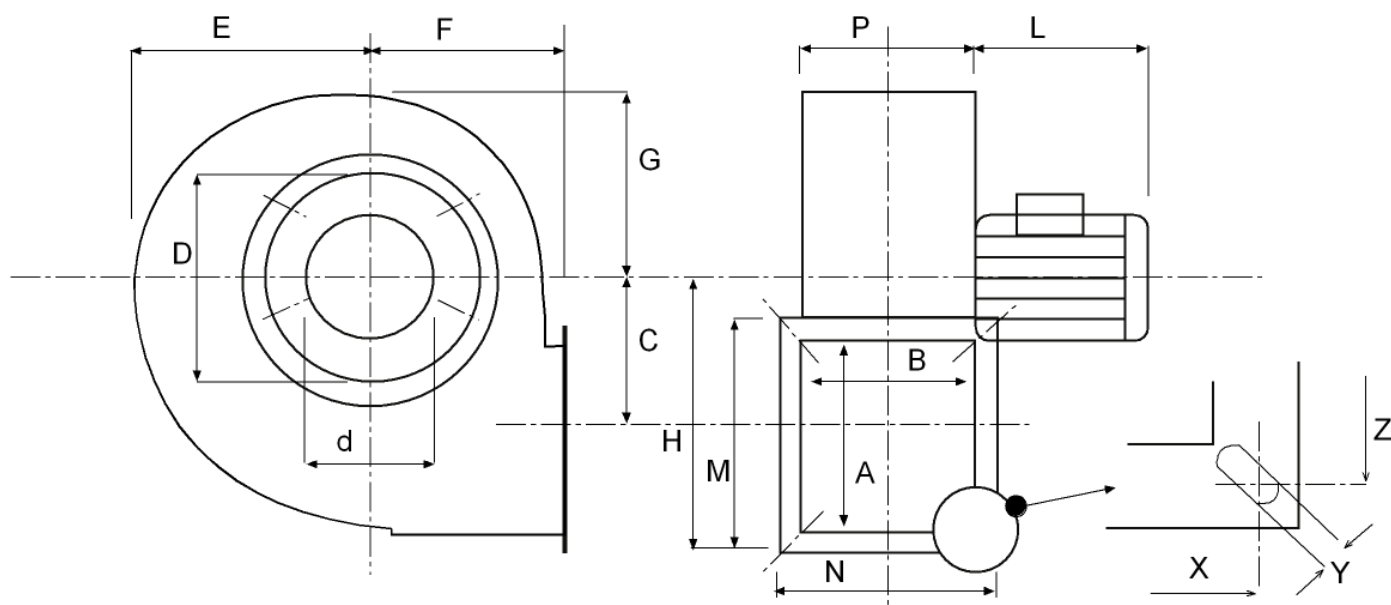
Technical data

Impeller rpm	1400
Motor rpm	1400
Approx. weight(kg)	9
Maximum flow rate(m³/h)	835

Power(kW)	0,12
Imax 230V(A)	1,1
Imax 400V(A)	-
Imax 690V(A)	-

MDI 16/8 M4 0,12kW

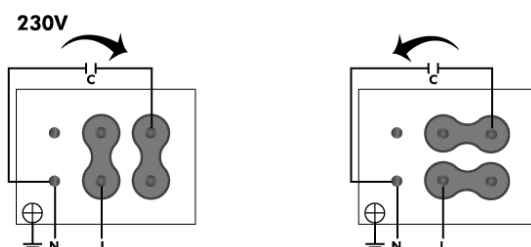
dimensions diagram



Dimensions (mm)

A=110	B=110	C=115	D=182	d=120	E=158	F=120	G=134	H=195	L=190	M=155	N=155
P=114	X=133	Y=9x16	Z=133								

Wiring diagram



MDI 18/8 M2 0,55kW

Series general data MDI



MANUFACTURING FEATURES:

- Welded stainless steel AISI 304 housing.
- Stainless steel single inlet forward curved impeller.
- Standard asynchronous squirrel-cage motor with IP-55 protection and Class F insulation. Manufactured with standard voltages: 230V 50Hz in single phase motors and 230/400V 50Hz in three phase motors.

APPLICATIONS:

Designed for inline installation, they are suitable for:

- Industrial applications, extraction or injection of air.
- Cooling of machines and parts.
- Clean air transport.
- Corrosive air transport.
- Maximum working temperature: carried air: 130°C, ambient 1ph 50°C, 3ph 60°C.

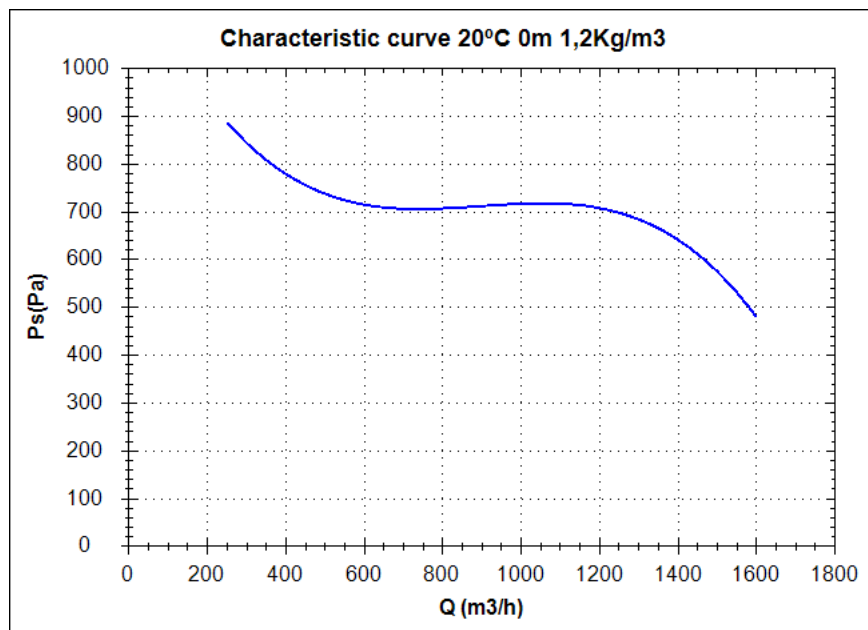
UNDER REQUEST:

- 60Hz fans and special voltages.
- 2 speed motors.
- Flameproof and explosionproof fans with ATEX certified motors.
- Fans provided with cooling disk for high temperatures.

Series accessories MDI



Characteristic curve



Design point

Q (m3/h)	
Ps(Pa)	

Service point

Impeller rpm	
Max. temp.(°C)	
Q (m3/h)	
Ps(Pa)	
Pd(Pa)	
Pt(Pa)	
Air speed(m/s)	

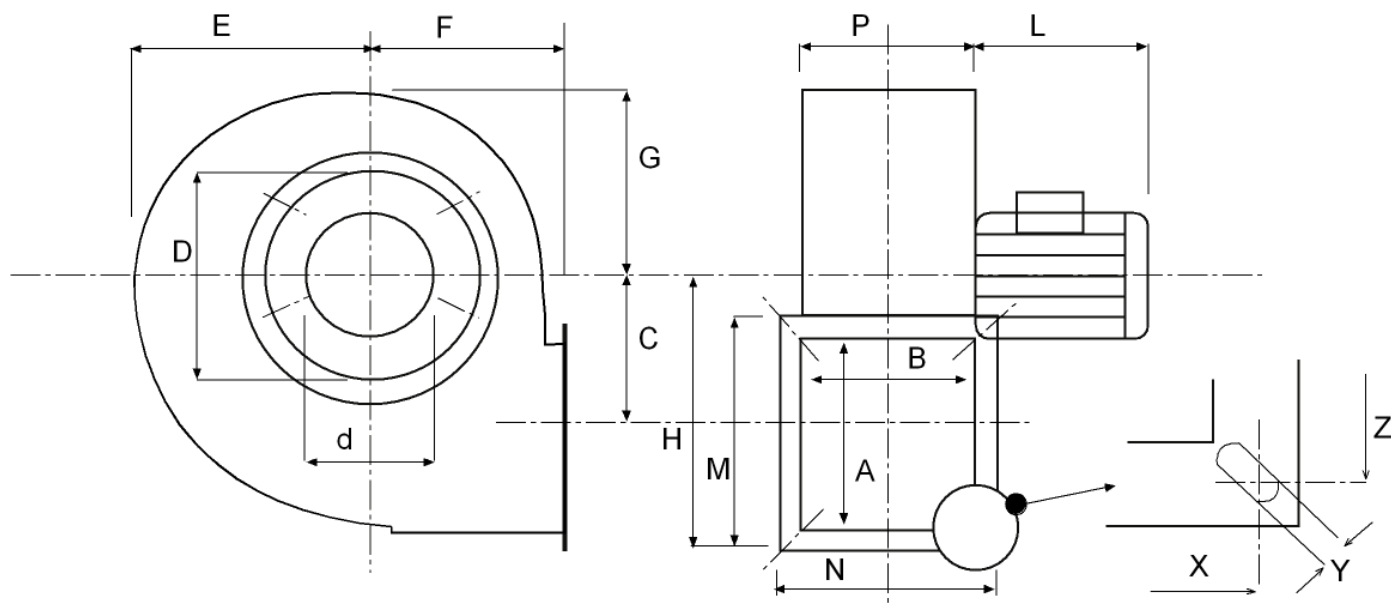
Technical data

Impeller rpm	2800
Motor rpm	2800
Approx. weight(kg)	10,2
Maximum flow rate(m3/h)	1600

Power(kW)	0,55
Imax 230V(A)	3,88
Imax 400V(A)	-
Imax 690V(A)	-

MDI 18/8 M2 0,55kW

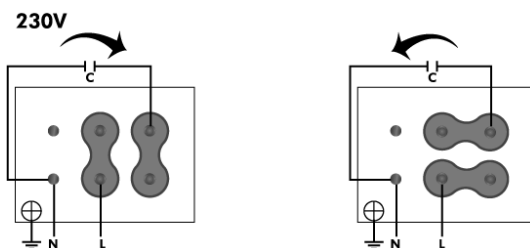
dimensions diagram



Dimensions (mm)

A=110	B=110	C=115	D=200	d=140	E=158	F=120	G=134	H=195	L=215	M=155	N=155
P=114	X=133	Y=9X16	Z=133								

Wiring diagram



MDI 18/8 M4 0,18kW

Series general data MDI



MANUFACTURING FEATURES:

- Welded stainless steel AISI 304 housing.
- Stainless steel single inlet forward curved impeller.
- Standard asynchronous squirrel-cage motor with IP-55 protection and Class F insulation. Manufactured with standard voltages: 230V 50Hz in single phase motors and 230/400V 50Hz in three phase motors.

APPLICATIONS:

Designed for inline installation, they are suitable for:

- Industrial applications, extraction or injection of air.
- Cooling of machines and parts.
- Clean air transport.
- Corrosive air transport.
- Maximum working temperature: carried air: 130°C, ambient 1ph 50°C, 3ph 60°C.

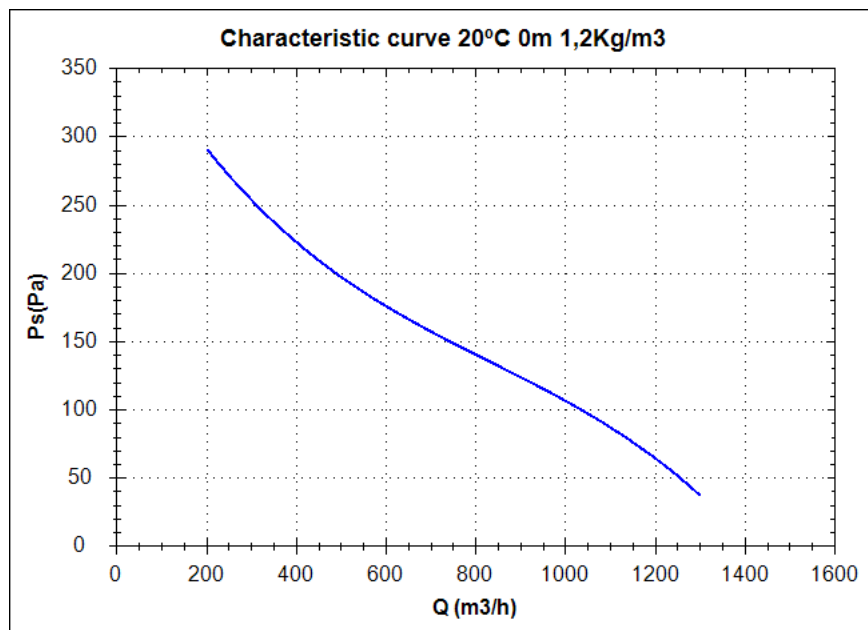
UNDER REQUEST:

- 60Hz fans and special voltages.
- 2 speed motors.
- Flameproof and explosionproof fans with ATEX certified motors.
- Fans provided with cooling disk for high temperatures.

Series accessories MDI



Characteristic curve



Design point

Q (m³/h)	
Ps(Pa)	

Service point

Impeller rpm	
Max. temp.(°C)	
Q (m³/h)	
Ps(Pa)	
Pd(Pa)	
Pt(Pa)	
Air speed(m/s)	

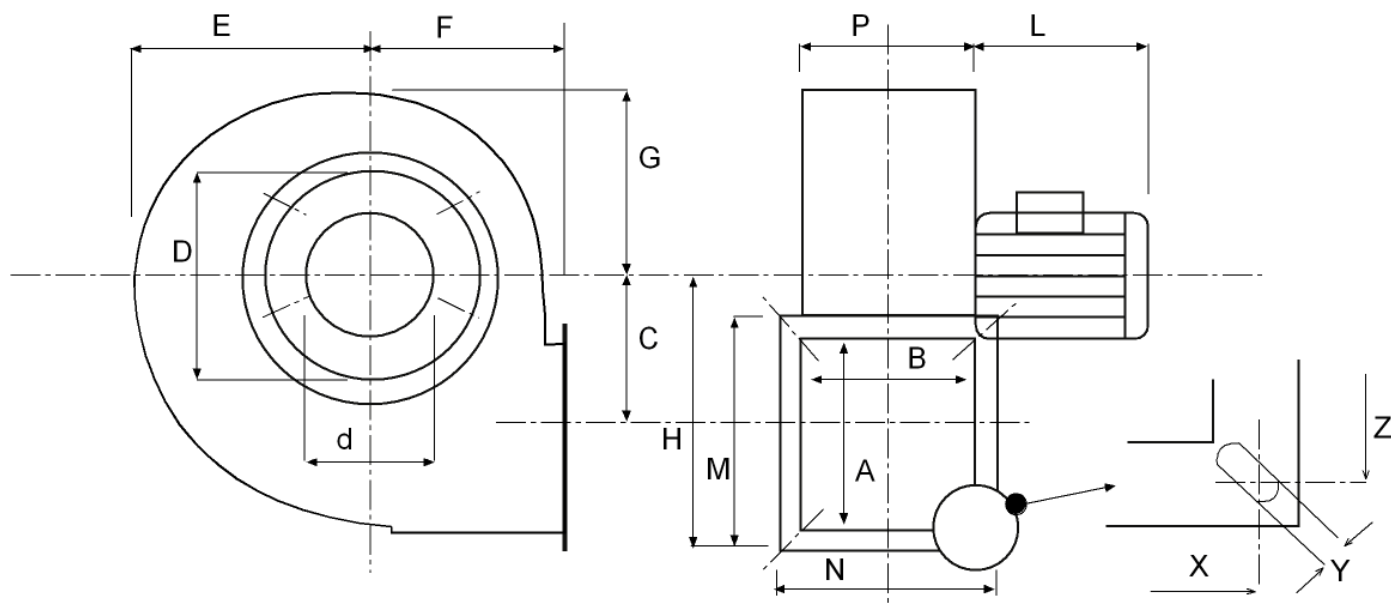
Technical data

Impeller rpm	1400
Motor rpm	1400
Approx. weight(kg)	9,7
Maximum flow rate(m³/h)	1266

Power(kW)	0,18
Imax 230V(A)	1,62
Imax 400V(A)	-
Imax 690V(A)	-

MDI 18/8 M4 0,18kW

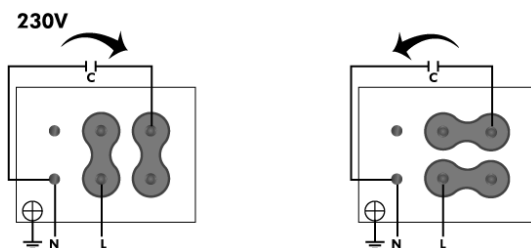
dimensions diagram



Dimensions (mm)

A=110	B=110	C=115	D=200	d=140	E=158	F=120	G=134	H=195	L=190	M=155	N=155
P=114	X=133	Y=9X16	Z=133								

Wiring diagram



MDI 20/10 M2 1,1kW

Series general data MDI



MANUFACTURING FEATURES:

- Welded stainless steel AISI 304 housing.
- Stainless steel single inlet forward curved impeller.
- Standard asynchronous squirrel-cage motor with IP-55 protection and Class F insulation. Manufactured with standard voltages: 230V 50Hz in single phase motors and 230/400V 50Hz in three phase motors.

APPLICATIONS:

Designed for inline installation, they are suitable for:

- Industrial applications, extraction or injection of air.
- Cooling of machines and parts.
- Clean air transport.
- Corrosive air transport.
- Maximum working temperature: carried air: 130°C, ambient 1ph 50°C, 3ph 60°C.

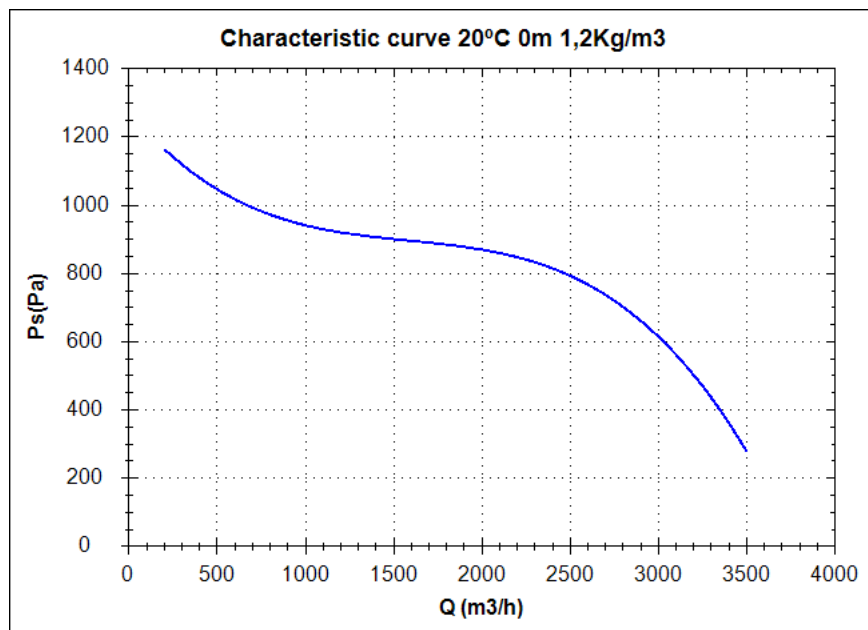
UNDER REQUEST:

- 60Hz fans and special voltages.
- 2 speed motors.
- Flameproof and explosionproof fans with ATEX certified motors.
- Fans provided with cooling disk for high temperatures.

Series accessories MDI



Characteristic curve



Design point

Q (m³/h)	
Ps(Pa)	

Service point

Impeller rpm	
Max. temp.(°C)	
Q (m³/h)	
Ps(Pa)	
Pd(Pa)	
Pt(Pa)	
Air speed(m/s)	

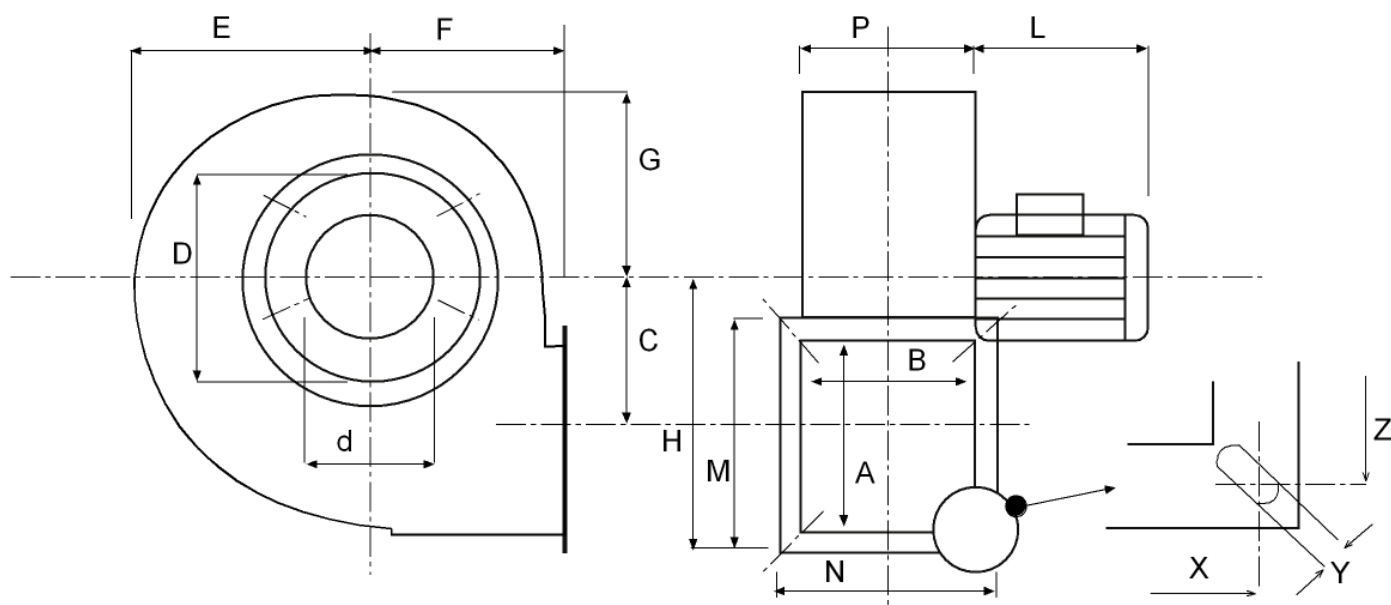
Technical data

Impeller rpm	2800
Motor rpm	2800
Approx. weight(kg)	19
Maximum flow rate(m³/h)	3500

Power(kW)	1,1
Imax 230V(A)	7,02
Imax 400V(A)	-
Imax 690V(A)	-

MDI 20/10 M2 1,1kW

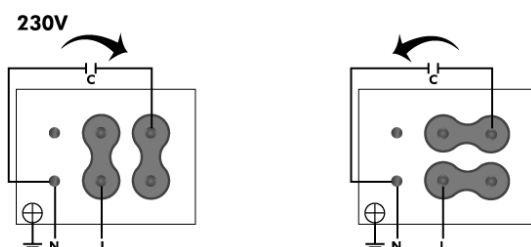
dimensions diagram



Dimensions (mm)

A=140	B=140	C=145	D=220	d=170	E=190	F=155	G=160	H=240	L=250	M=190	N=190
P=144	X=165	Y=9X16	Z=165								

Wiring diagram



MDI 20/10 M4 0,25kW

Series general data MDI



MANUFACTURING FEATURES:

- Welded stainless steel AISI 304 housing.
- Stainless steel single inlet forward curved impeller.
- Standard asynchronous squirrel-cage motor with IP-55 protection and Class F insulation. Manufactured with standard voltages: 230V 50Hz in single phase motors and 230/400V 50Hz in three phase motors.

APPLICATIONS:

Designed for inline installation, they are suitable for:

- Industrial applications, extraction or injection of air.
- Cooling of machines and parts.
- Clean air transport.
- Corrosive air transport.
- Maximum working temperature: carried air: 130°C, ambient 1ph 50°C, 3ph 60°C.

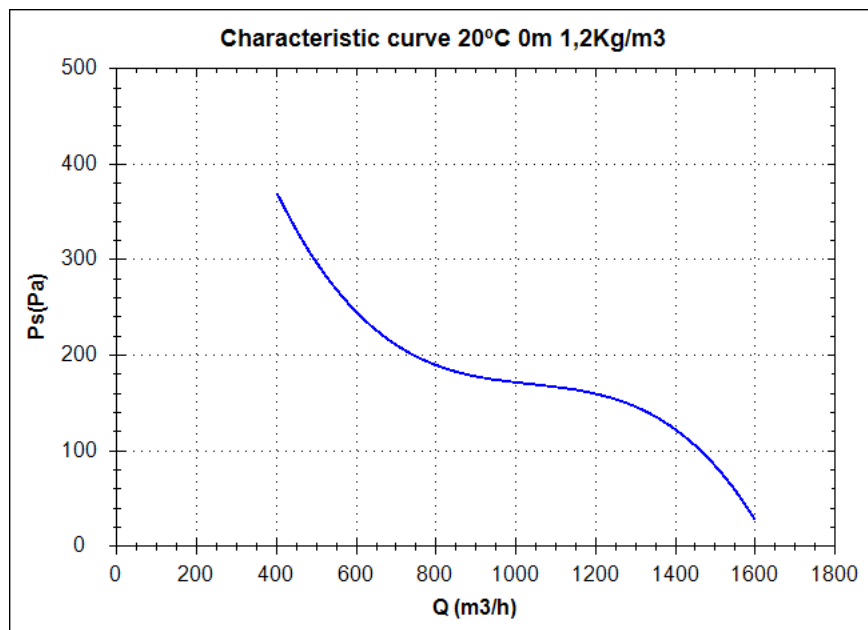
UNDER REQUEST:

- 60Hz fans and special voltages.
- 2 speed motors.
- Flameproof and explosionproof fans with ATEX certified motors.
- Fans provided with cooling disk for high temperatures.

Series accessories MDI



Characteristic curve



Design point

Q (m³/h)	
Ps(Pa)	

Service point

Impeller rpm	
Max. temp.(°C)	
Q (m³/h)	
Ps(Pa)	
Pd(Pa)	
Pt(Pa)	
Air speed(m/s)	

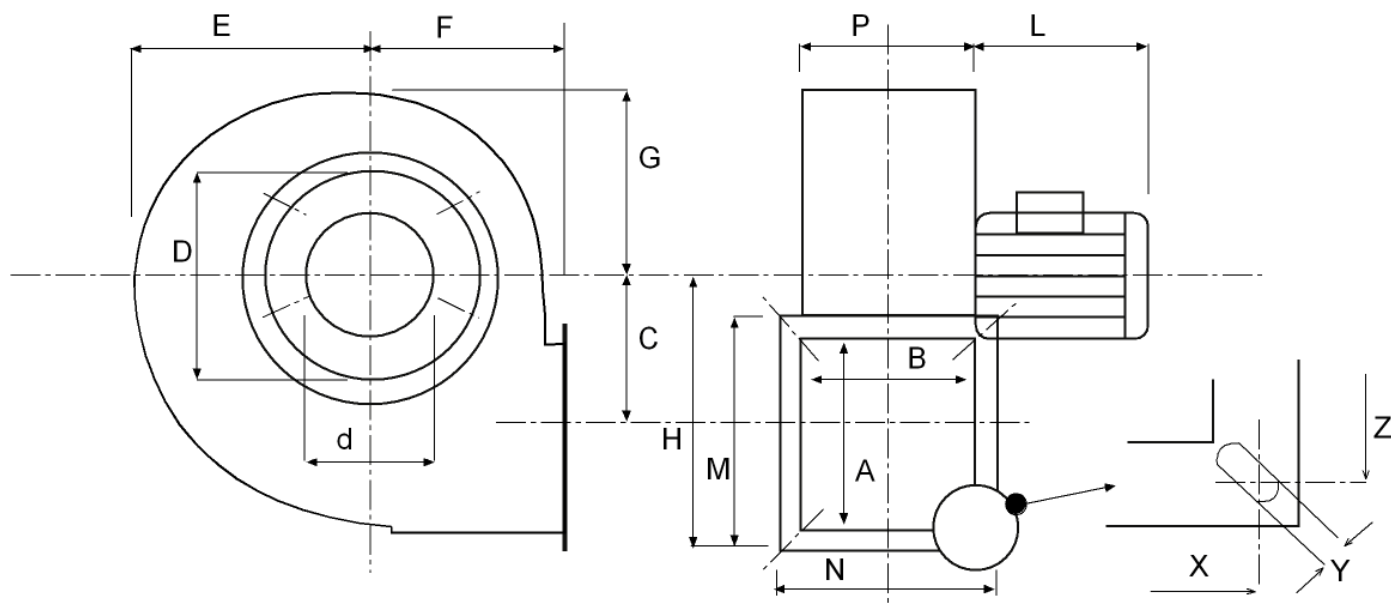
Technical data

Impeller rpm	1400
Motor rpm	1400
Approx. weight(kg)	11
Maximum flow rate(m³/h)	1600

Power(kW)	0,25
Imax 230V(A)	2,02
Imax 400V(A)	-
Imax 690V(A)	-

MDI 20/10 M4 0,25kW

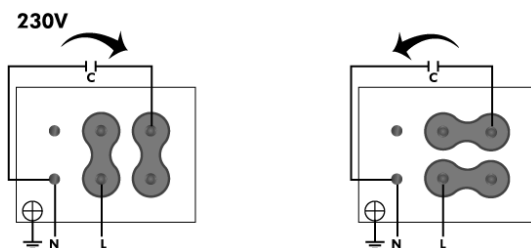
dimensions diagram



Dimensions (mm)

A=140	B=140	C=145	D=220	d=170	E=190	F=155	G=160	H=240	L=190	M=190	N=190
P=144	X=165	Y=9X16	Z=165								

Wiring diagram



MDI 25/13 M4 0,55kW

Series general data MDI



MANUFACTURING FEATURES:

- Welded stainless steel AISI 304 housing.
- Stainless steel single inlet forward curved impeller.
- Standard asynchronous squirrel-cage motor with IP-55 protection and Class F insulation. Manufactured with standard voltages: 230V 50Hz in single phase motors and 230/400V 50Hz in three phase motors.

APPLICATIONS:

Designed for inline installation, they are suitable for:

- Industrial applications, extraction or injection of air.
- Cooling of machines and parts.
- Clean air transport.
- Corrosive air transport.
- Maximum working temperature: carried air: 130°C, ambient 1ph 50°C, 3ph 60°C.

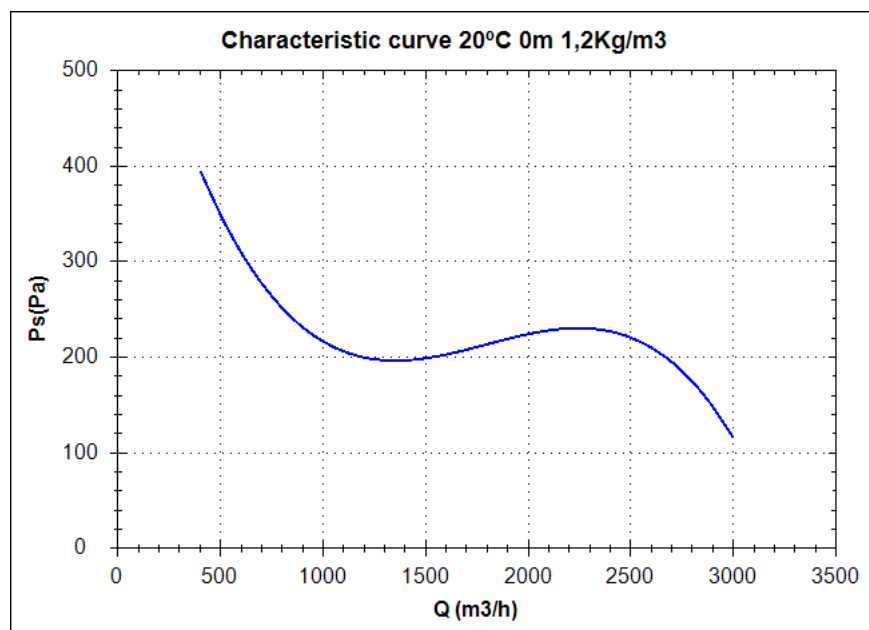
UNDER REQUEST:

- 60Hz fans and special voltages.
- 2 speed motors.
- Flameproof and explosionproof fans with ATEX certified motors.
- Fans provided with cooling disk for high temperatures.

Series accessories MDI



Characteristic curve



Design point

Q (m³/h)	
Ps(Pa)	

Service point

Impeller rpm	
Max. temp.(°C)	
Q (m³/h)	
Ps(Pa)	
Pd(Pa)	
Pt(Pa)	
Air speed(m/s)	

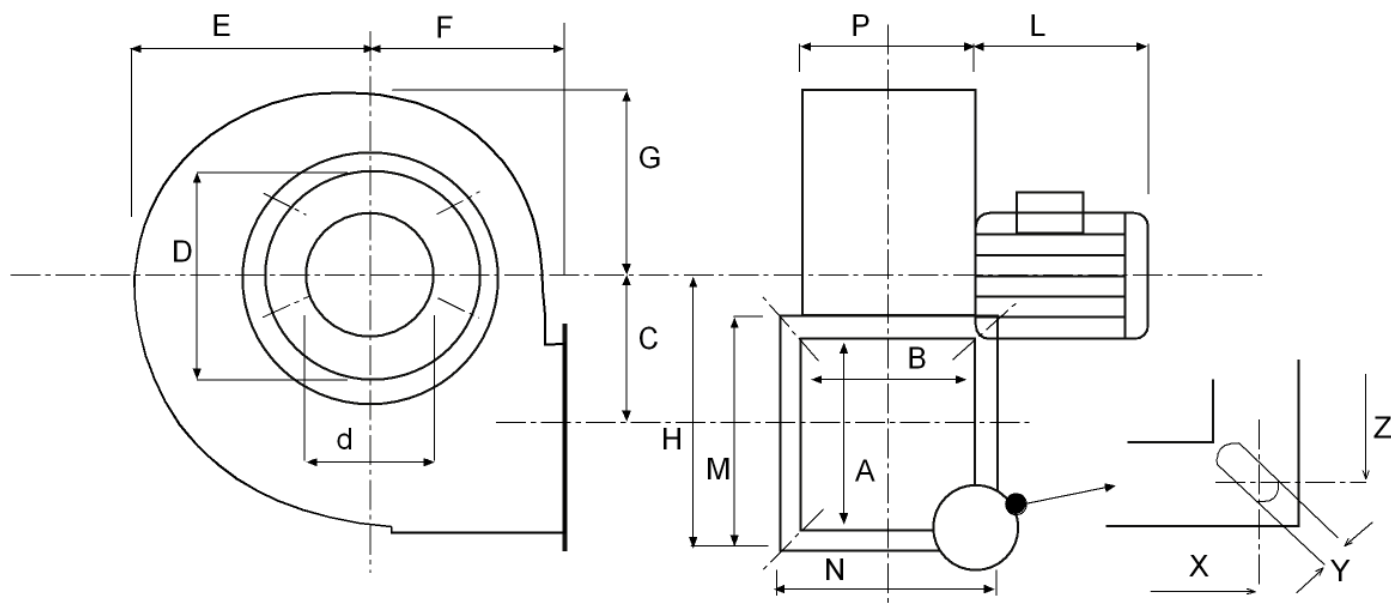
Technical data

Impeller rpm	1400
Motor rpm	1400
Approx. weight(kg)	24
Maximum flow rate(m³/h)	3000

Power(kW)	0,55
Imax 230V(A)	4,25
Imax 400V(A)	-
Imax 690V(A)	-

MDI 25/13 M4 0,55kW

dimensions diagram



Dimensions (mm)

A=200	B=200	C=185	D=280	d=250	E=245	F=180	G=200	H=310	L=230	M=250	N=250
P=204	X=230	Y=9	Z=230								

Wiring diagram

