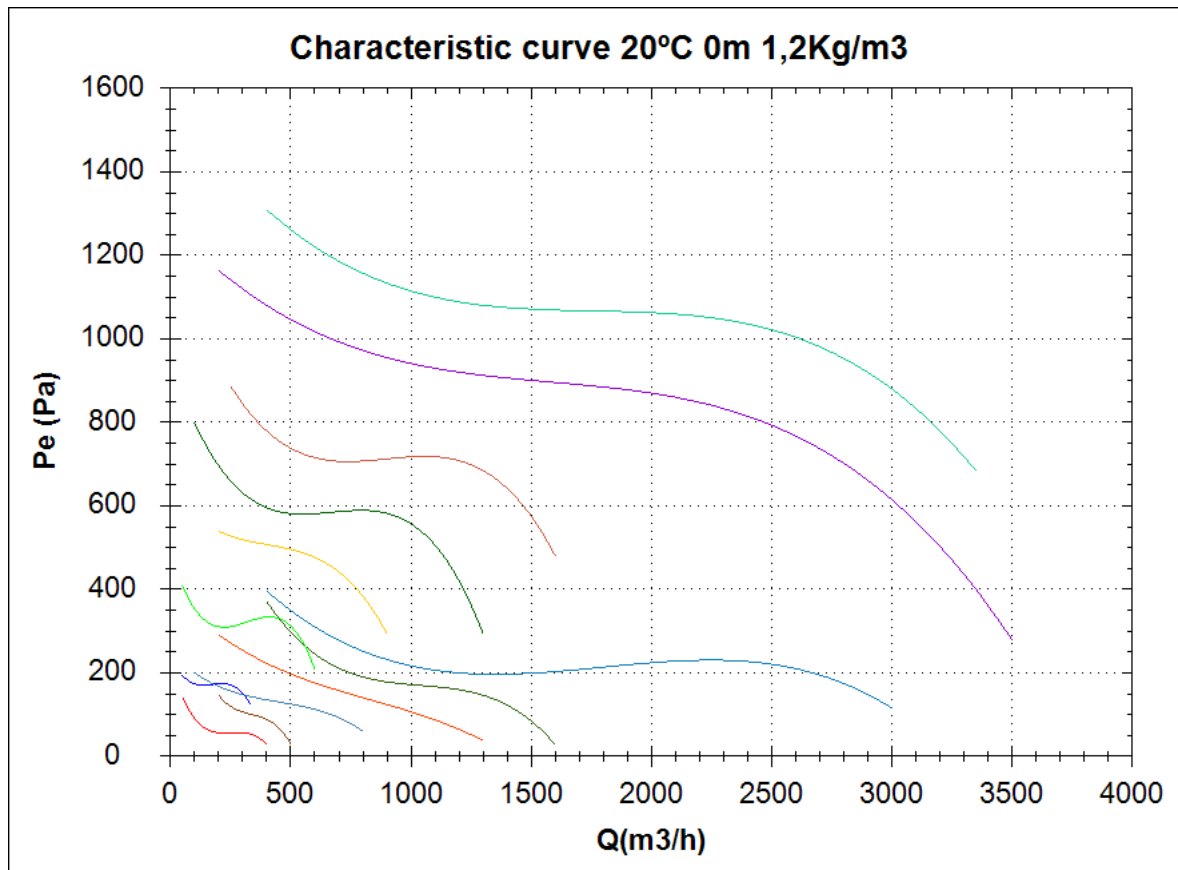


Comparative

Design point

Q (m3/h)	
Ps(Pa)	



		Model	Q(m3/h)	P (Pa)
1	MDI 10/5 T2 0,09kW			
2	MDI 13/6 T2 0,18kW			
3	MDI 13/6 T4 0,12kW			
4	MDI 13/8 T2 0,37kW			
5	MDI 13/8 T4 0,12kW			
6	MDI 16/8 T2 0,25kW			
7	MDI 16/8 T4 0,12kW			
8	MDI 18/8 T2 0,55kW			
9	MDI 18/8 T4 0,18kW			
10	MDI 20/10 T2 1,1kW			
11	MDI 20/10 T4 0,25kW			
12	MDI 25/13 T2 2,2kW			
13	MDI 25/13 T4 0,55kW			

MDI 10/5 T2 0,09kW

Series general data MDI



MANUFACTURING FEATURES:

- Welded stainless steel AISI 304 housing.
- Stainless steel single inlet forward curved impeller.
- Standard asynchronous squirrel-cage motor with IP-55 protection and Class F insulation. Manufactured with standard voltages: 230V 50Hz in single phase motors and 230/400V 50Hz in three phase motors.

APPLICATIONS:

Designed for inline installation, they are suitable for:

- Industrial applications, extraction or injection of air.
- Cooling of machines and parts.
- Clean air transport.
- Corrosive air transport.
- Maximum working temperature: carried air: 130°C, ambient 1ph 50°C, 3ph 60°C.

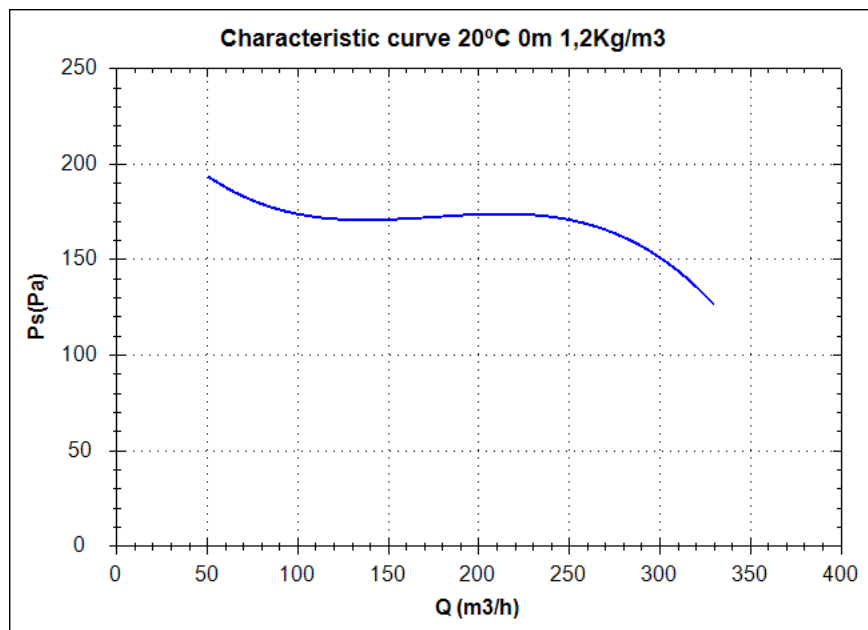
UNDER REQUEST:

- 60Hz fans and special voltages.
- 2 speed motors.
- Flameproof and explosionproof fans with ATEX certified motors.
- Fans provided with cooling disk for high temperatures.

Series accessories MDI



Characteristic curve



Design point

Q (m³/h)	
Ps(Pa)	

Service point

Impeller rpm	
Max. temp.(°C)	
Q (m³/h)	
Ps(Pa)	
Pd(Pa)	
Pt(Pa)	
Air speed(m/s)	

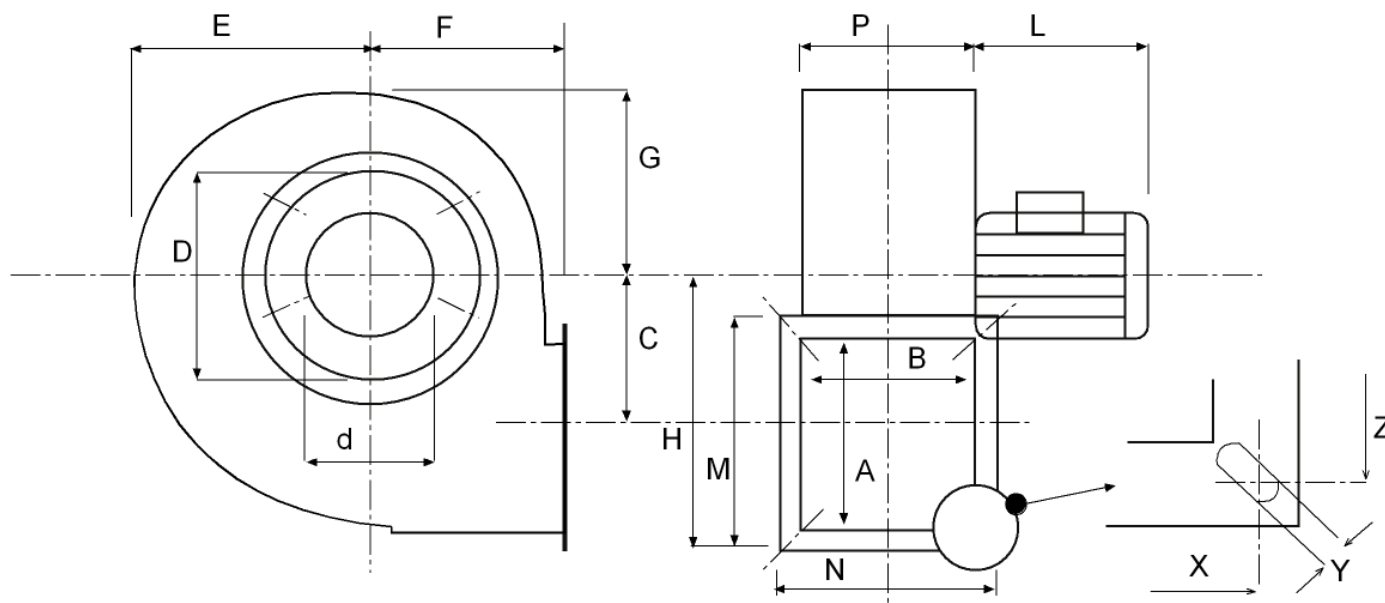
Technical data

Impeller rpm	2800
Motor rpm	2800
Approx. weight(kg)	2,4
Maximum flow rate(m³/h)	370

Power(kW)	0,09
Imax 230V(A)	0,57
Imax 400V(A)	0,33
Imax 690V(A)	-

MDI 10/5 T2 0,09kW

dimensions diagram

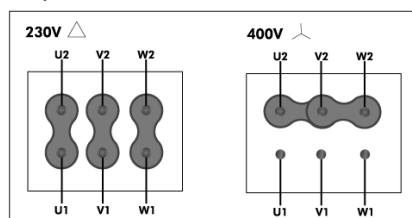


Dimensions (mm)

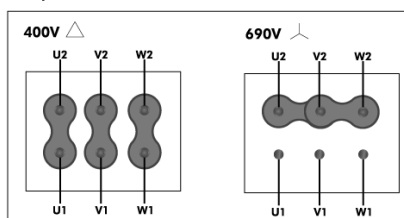
A=70	B=70	C=65	D=115	d=75	E=90	F=80	G=77	H=120	L=165	M=100	N=100
P=72	X=85	Y=7X14	Z=85								

Wiring diagram

230/400V



400/690V



MDI 13/6 T2 0,18kW

Series general data MDI



MANUFACTURING FEATURES:

- Welded stainless steel AISI 304 housing.
- Stainless steel single inlet forward curved impeller.
- Standard asynchronous squirrel-cage motor with IP-55 protection and Class F insulation. Manufactured with standard voltages: 230V 50Hz in single phase motors and 230/400V 50Hz in three phase motors.

APPLICATIONS:

Designed for inline installation, they are suitable for:

- Industrial applications, extraction or injection of air.
- Cooling of machines and parts.
- Clean air transport.
- Corrosive air transport.
- Maximum working temperature: carried air: 130°C, ambient 1ph 50°C, 3ph 60°C.

UNDER REQUEST:

- 60Hz fans and special voltages.
- 2 speed motors.
- Flameproof and explosionproof fans with ATEX certified motors.
- Fans provided with cooling disk for high temperatures.

Series accessories MDI



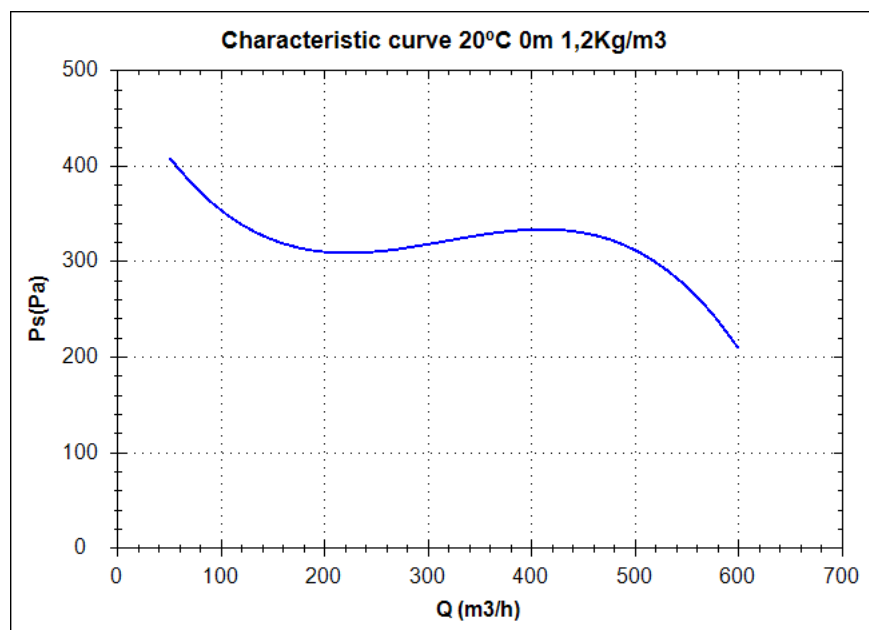
RFS

INT

PE

RAI

Characteristic curve



Design point

Q (m³/h)	
Ps(Pa)	

Service point

Impeller rpm	
Max. temp.(°C)	
Q (m³/h)	
Ps(Pa)	
Pd(Pa)	
Pt(Pa)	
Air speed(m/s)	

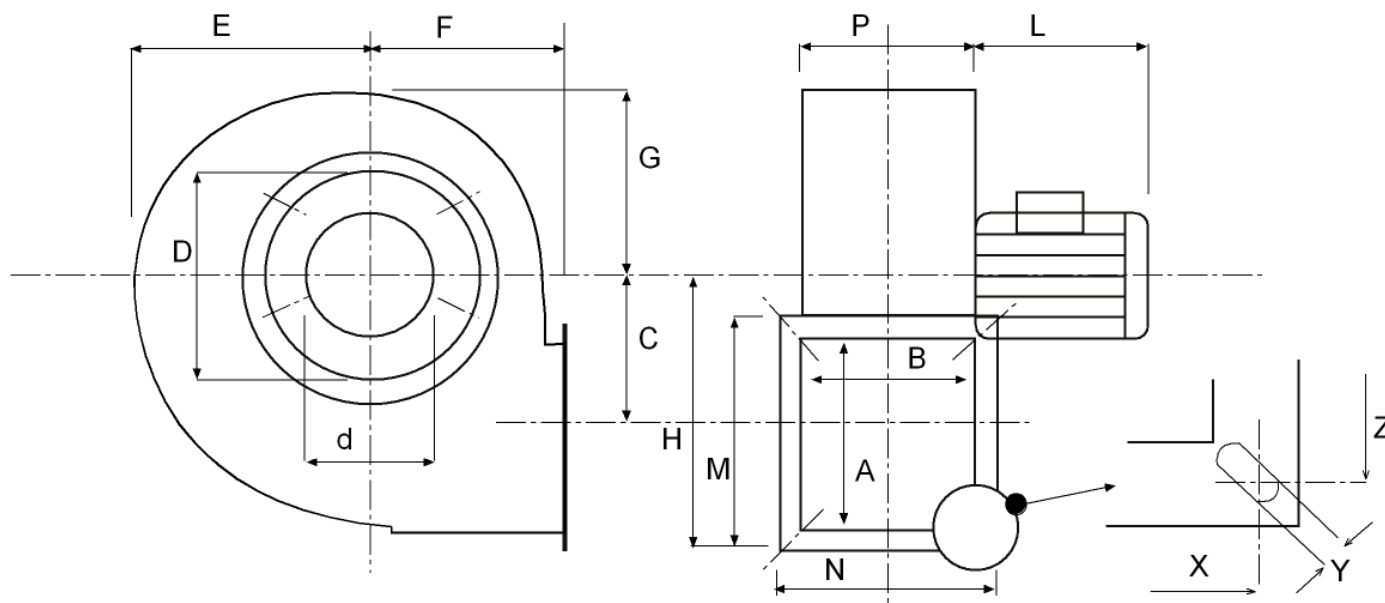
Technical data

Impeller rpm	2800
Motor rpm	2800
Approx. weight(kg)	5,3
Maximum flow rate(m³/h)	508

Power(kW)	0,18
Imax 230V(A)	0,91
Imax 400V(A)	0,53
Imax 690V(A)	-

MDI 13/6 T2 0,18kW

dimensions diagram

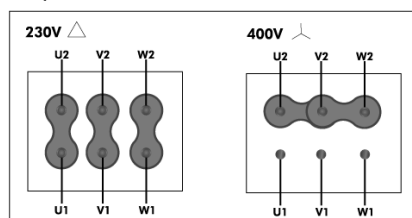


Dimensions (mm)

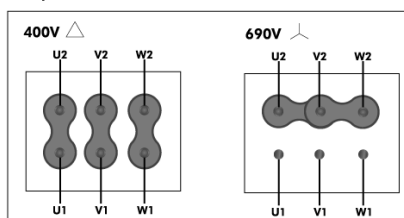
A=90	B=90	C=92	D=158	d=101	E=125	F=104	G=110	H=160	L=190	M=130	N=130
P=92	X=110	Y=9X16	Z=110								

Wiring diagram

230/400V



400/690V



MDI 13/6 T4 0,12kW

Series general data MDI



MANUFACTURING FEATURES:

- Welded stainless steel AISI 304 housing.
- Stainless steel single inlet forward curved impeller.
- Standard asynchronous squirrel-cage motor with IP-55 protection and Class F insulation. Manufactured with standard voltages: 230V 50Hz in single phase motors and 230/400V 50Hz in three phase motors.

APPLICATIONS:

Designed for inline installation, they are suitable for:

- Industrial applications, extraction or injection of air.
- Cooling of machines and parts.
- Clean air transport.
- Corrosive air transport.
- Maximum working temperature: carried air: 130°C, ambient 1ph 50°C, 3ph 60°C.

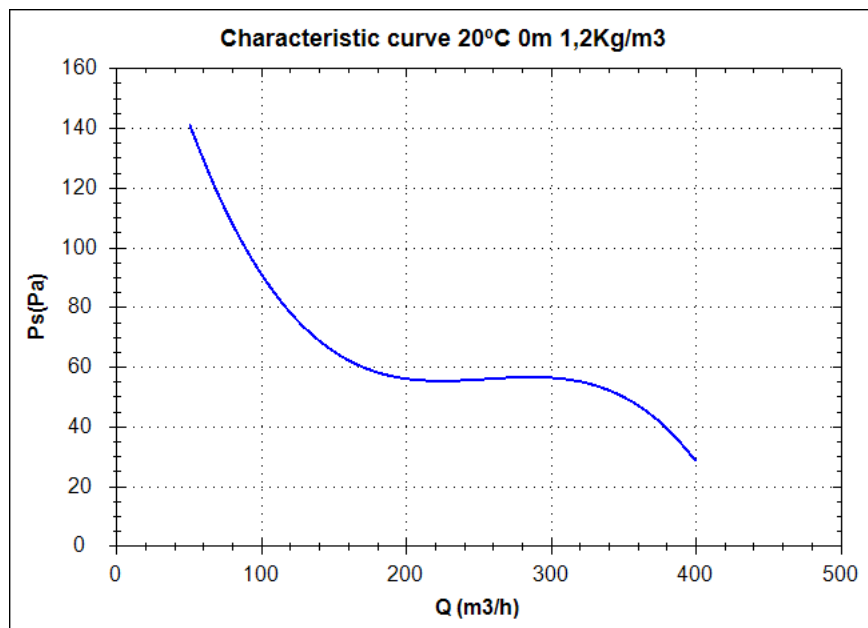
UNDER REQUEST:

- 60Hz fans and special voltages.
- 2 speed motors.
- Flameproof and explosionproof fans with ATEX certified motors.
- Fans provided with cooling disk for high temperatures.

Series accessories MDI



Characteristic curve



Design point

Q (m³/h)	
Ps(Pa)	

Service point

Impeller rpm	
Max. temp.(°C)	
Q (m³/h)	
Ps(Pa)	
Pd(Pa)	
Pt(Pa)	
Air speed(m/s)	

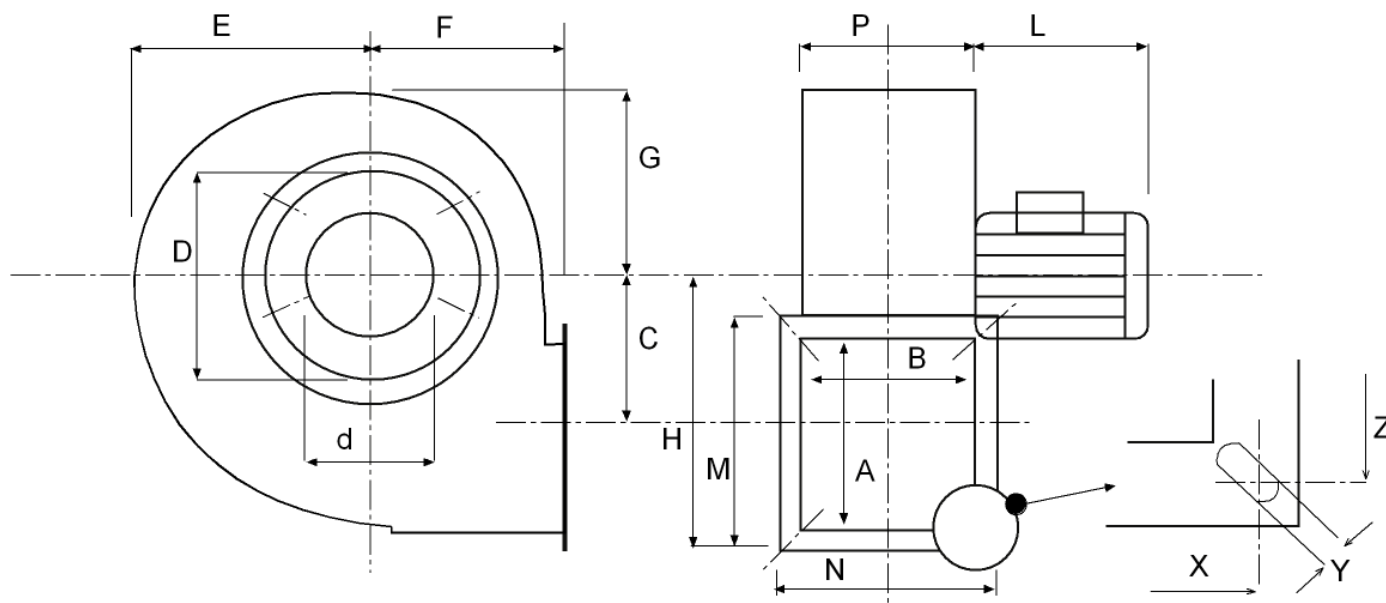
Technical data

Impeller rpm	1400
Motor rpm	1400
Approx. weight(kg)	4,9
Maximum flow rate(m³/h)	416

Power(kW)	0,12
Imax 230V(A)	0,84
Imax 400V(A)	0,48
Imax 690V(A)	-

MDI 13/6 T4 0,12kW

dimensions diagram

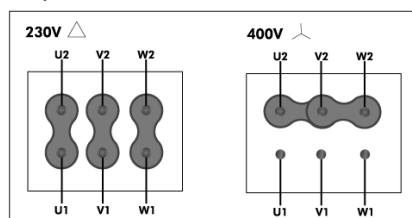


Dimensions (mm)

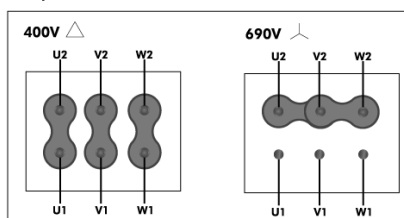
A=90	B=90	C=92	D=158	d=101	E=125	F=104	G=110	H=160	L=190	M=130	N=130
P=92	X=110	Y=9X16	Z=110								

Wiring diagram

230/400V



400/690V



MDI 13/8 T2 0,37kW

Series general data MDI



MANUFACTURING FEATURES:

- Welded stainless steel AISI 304 housing.
- Stainless steel single inlet forward curved impeller.
- Standard asynchronous squirrel-cage motor with IP-55 protection and Class F insulation. Manufactured with standard voltages: 230V 50Hz in single phase motors and 230/400V 50Hz in three phase motors.

APPLICATIONS:

Designed for inline installation, they are suitable for:

- Industrial applications, extraction or injection of air.
- Cooling of machines and parts.
- Clean air transport.
- Corrosive air transport.
- Maximum working temperature: carried air: 130°C, ambient 1ph 50°C, 3ph 60°C.

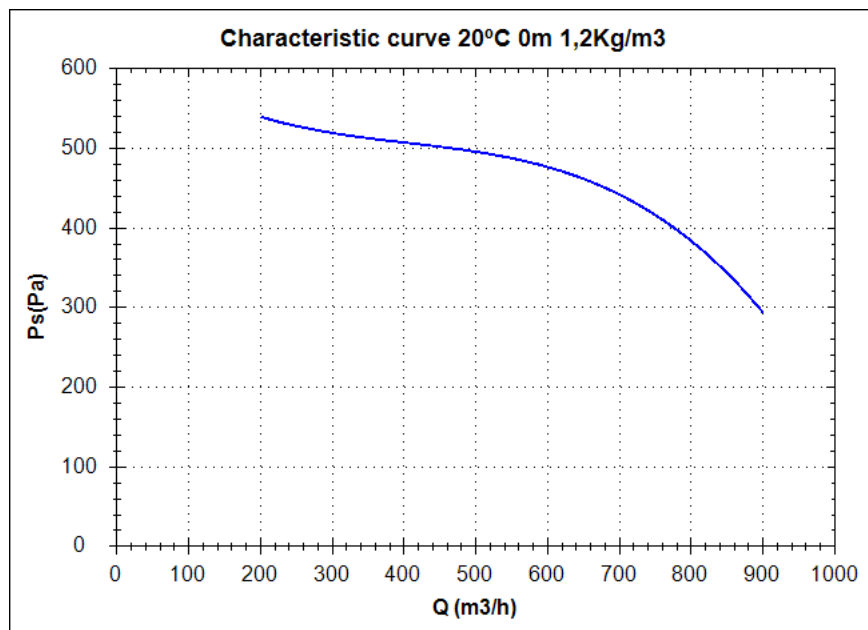
UNDER REQUEST:

- 60Hz fans and special voltages.
- 2 speed motors.
- Flameproof and explosionproof fans with ATEX certified motors.
- Fans provided with cooling disk for high temperatures.

Series accessories MDI



Characteristic curve



Design point

Q (m³/h)	
Ps(Pa)	

Service point

Impeller rpm	
Max. temp.(°C)	
Q (m³/h)	
Ps(Pa)	
Pd(Pa)	
Pt(Pa)	
Air speed(m/s)	

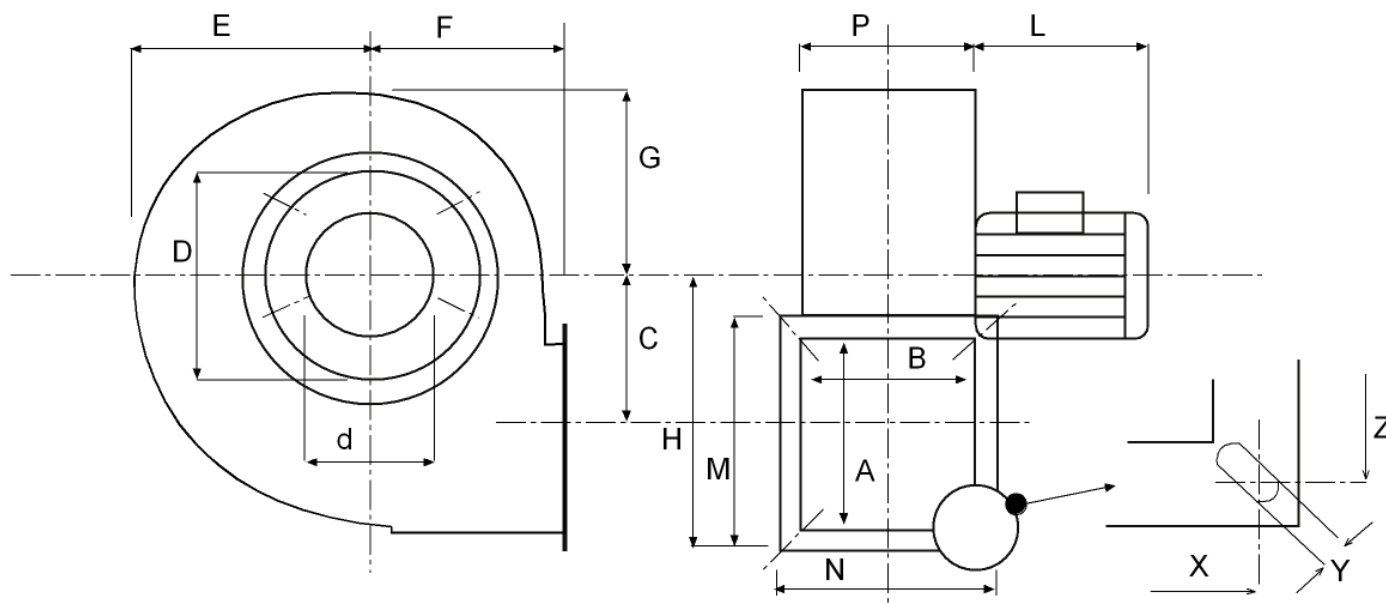
Technical data

Impeller rpm	2800
Motor rpm	2800
Approx. weight(kg)	9,4
Maximum flow rate(m³/h)	1275

Power(kW)	0,37
Imax 230V(A)	1,65
Imax 400V(A)	0,95
Imax 690V(A)	-

MDI 13/8 T2 0,37kW

dimensions diagram

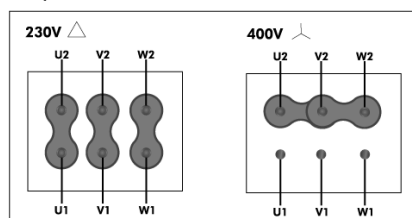


Dimensions (mm)

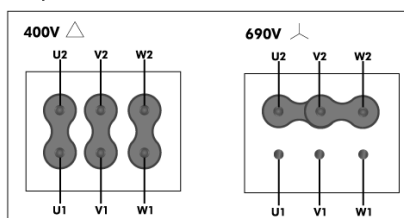
A=90	B=110	C=92	D=158	d=101	E=125	F=104	G=110	H=160	M=130	N=150	P=112
X=130	Y=9x16	Z=110									

Wiring diagram

230/400V



400/690V



MDI 13/8 T4 0,12kW

Series general data MDI



MANUFACTURING FEATURES:

- Welded stainless steel AISI 304 housing.
- Stainless steel single inlet forward curved impeller.
- Standard asynchronous squirrel-cage motor with IP-55 protection and Class F insulation. Manufactured with standard voltages: 230V 50Hz in single phase motors and 230/400V 50Hz in three phase motors.

APPLICATIONS:

Designed for inline installation, they are suitable for:

- Industrial applications, extraction or injection of air.
- Cooling of machines and parts.
- Clean air transport.
- Corrosive air transport.
- Maximum working temperature: carried air: 130°C, ambient 1ph 50°C, 3ph 60°C.

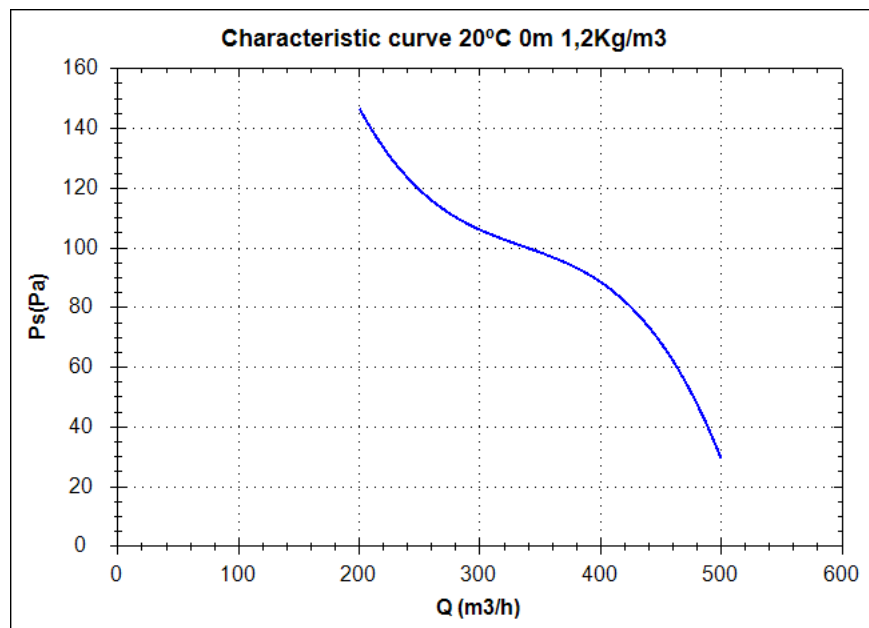
UNDER REQUEST:

- 60Hz fans and special voltages.
- 2 speed motors.
- Flameproof and explosionproof fans with ATEX certified motors.
- Fans provided with cooling disk for high temperatures.

Series accessories MDI



Characteristic curve



Design point

Q (m³/h)	
Ps(Pa)	

Service point

Impeller rpm	
Max. temp.(°C)	
Q (m³/h)	
Ps(Pa)	
Pd(Pa)	
Pt(Pa)	
Air speed(m/s)	

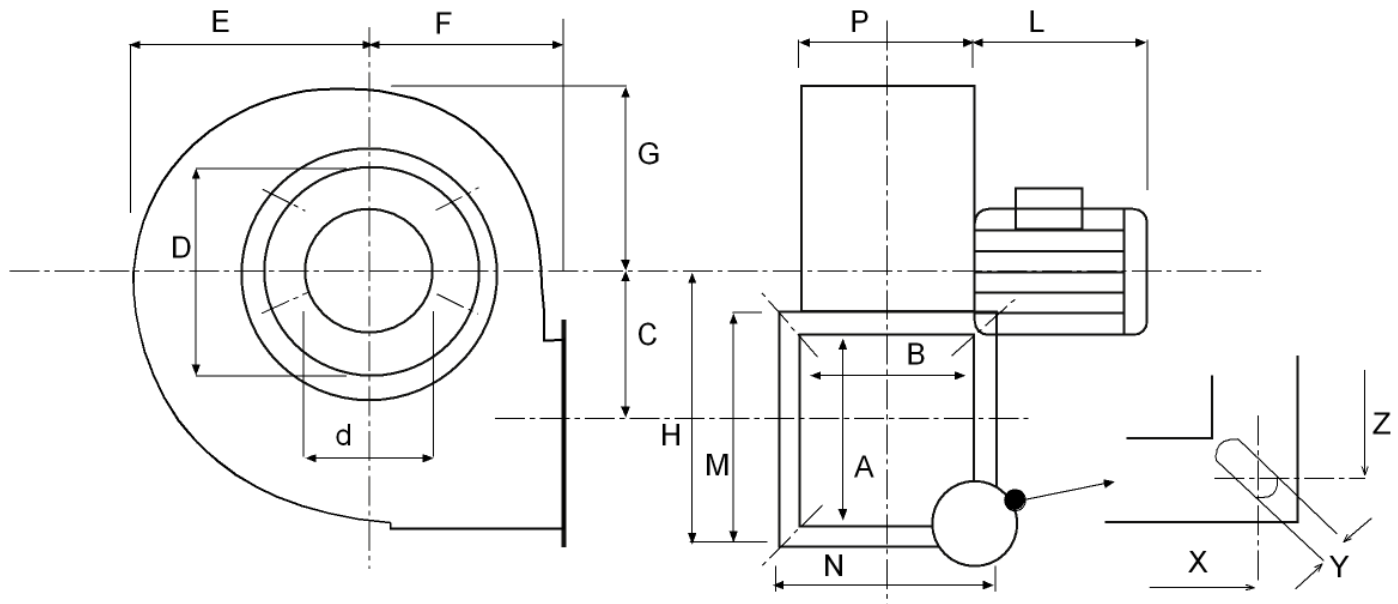
Technical data

Impeller rpm	1400
Motor rpm	1400
Approx. weight(kg)	5,8
Maximum flow rate(m³/h)	500

Power(kW)	0,12
Imax 230V(A)	0,84
Imax 400V(A)	0,48
Imax 690V(A)	-

MDI 13/8 T4 0,12kW

dimensions diagram

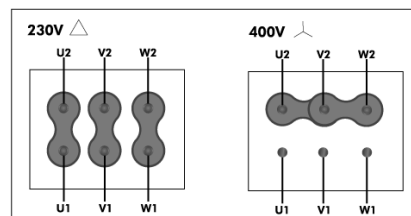


Dimensions (mm)

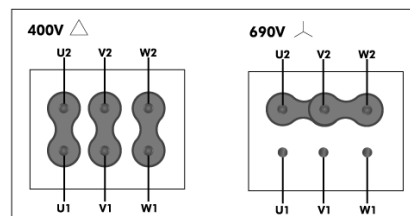
A=90	B=110	C=92	D=158	d=101	E=125	F=104	G=110	H=160	L=190	M=130	N=150
P=112	X=130	Y=9X16	Z=110								

Wiring diagram

230/400V



400/690V



MDI 16/8 T2 0,25kW

Series general data MDI



MANUFACTURING FEATURES:

- Welded stainless steel AISI 304 housing.
- Stainless steel single inlet forward curved impeller.
- Standard asynchronous squirrel-cage motor with IP-55 protection and Class F insulation. Manufactured with standard voltages: 230V 50Hz in single phase motors and 230/400V 50Hz in three phase motors.

APPLICATIONS:

Designed for inline installation, they are suitable for:

- Industrial applications, extraction or injection of air.
- Cooling of machines and parts.
- Clean air transport.
- Corrosive air transport.
- Maximum working temperature: carried air: 130°C, ambient 1ph 50°C, 3ph 60°C.

UNDER REQUEST:

- 60Hz fans and special voltages.
- 2 speed motors.
- Flameproof and explosionproof fans with ATEX certified motors.
- Fans provided with cooling disk for high temperatures.

Series accessories MDI



RFS



INT

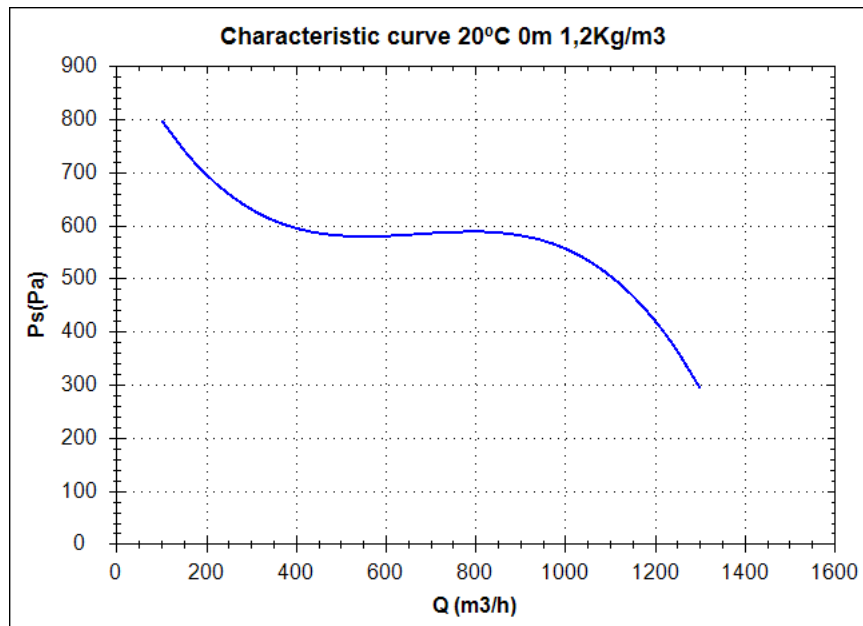


PE



RAI

Characteristic curve



Design point

Q (m³/h)	
Ps(Pa)	

Service point

Impeller rpm	
Max. temp.(°C)	
Q (m³/h)	
Ps(Pa)	
Pd(Pa)	
Pt(Pa)	
Air speed(m/s)	

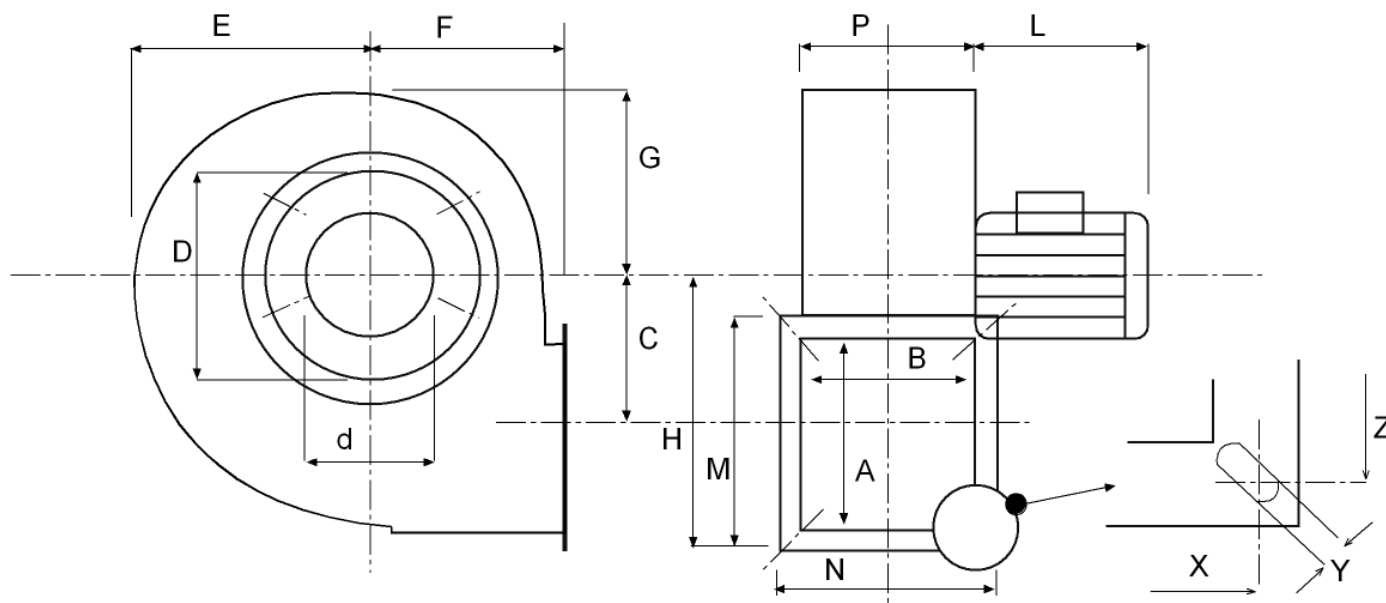
Technical data

Impeller rpm	2800
Motor rpm	2800
Approx. weight(kg)	6,2
Maximum flow rate(m³/h)	900

Power(kW)	0,25
Imax 230V(A)	1,17
Imax 400V(A)	1,68
Imax 690V(A)	-

MDI 16/8 T2 0,25kW

dimensions diagram

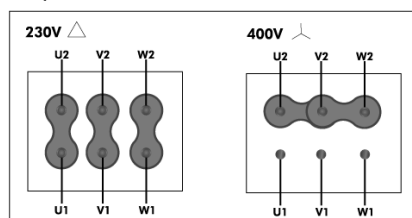


Dimensions (mm)

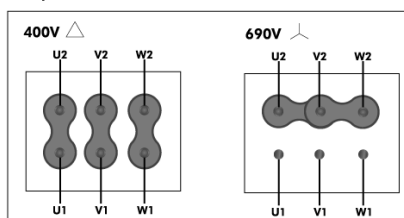
A=90	B=110	C=92	D=158	d=101	E=125	F=104	G=110	H=160	L=190	M=130	N=150
P=112	X=130	Y=9x16	Z=110								

Wiring diagram

230/400V



400/690V



MDI 16/8 T4 0,12kW

Series general data MDI



MANUFACTURING FEATURES:

- Welded stainless steel AISI 304 housing.
- Stainless steel single inlet forward curved impeller.
- Standard asynchronous squirrel-cage motor with IP-55 protection and Class F insulation. Manufactured with standard voltages: 230V 50Hz in single phase motors and 230/400V 50Hz in three phase motors.

APPLICATIONS:

Designed for inline installation, they are suitable for:

- Industrial applications, extraction or injection of air.
- Cooling of machines and parts.
- Clean air transport.
- Corrosive air transport.
- Maximum working temperature: carried air: 130°C, ambient 1ph 50°C, 3ph 60°C.

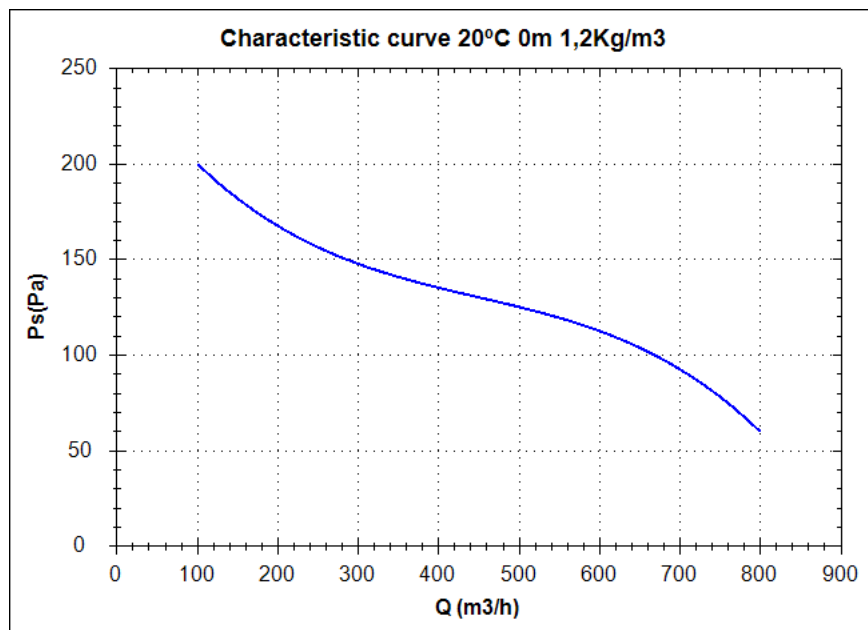
UNDER REQUEST:

- 60Hz fans and special voltages.
- 2 speed motors.
- Flameproof and explosionproof fans with ATEX certified motors.
- Fans provided with cooling disk for high temperatures.

Series accessories MDI



Characteristic curve



Design point

Q (m³/h)	
Ps(Pa)	

Service point

Impeller rpm	
Max. temp.(°C)	
Q (m³/h)	
Ps(Pa)	
Pd(Pa)	
Pt(Pa)	
Air speed(m/s)	

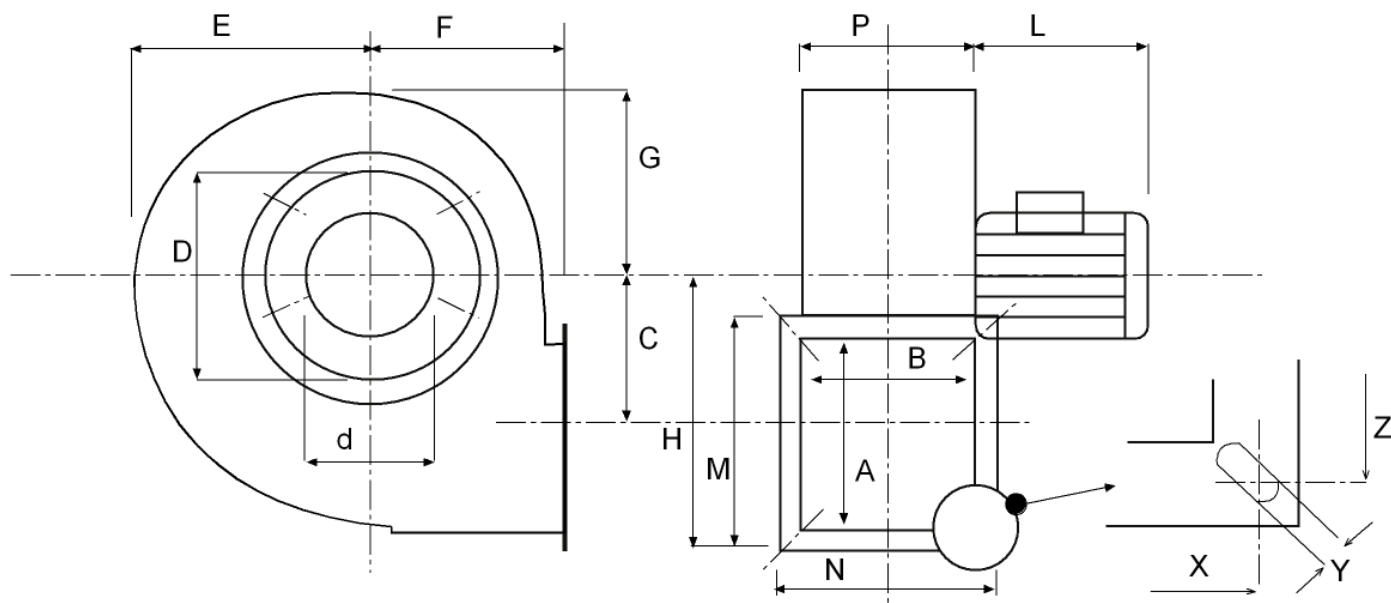
Technical data

Impeller rpm	1400
Motor rpm	1400
Approx. weight(kg)	9
Maximum flow rate(m³/h)	835

Power(kW)	0,12
Imax 230V(A)	0,84
Imax 400V(A)	0,48
Imax 690V(A)	-

MDI 16/8 T4 0,12kW

dimensions diagram

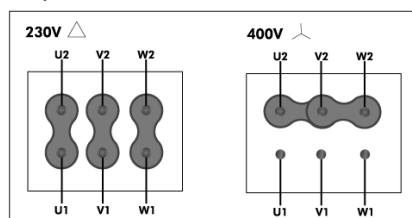


Dimensions (mm)

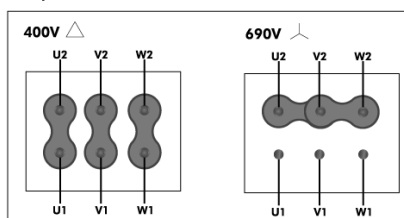
A=110	B=110	C=115	D=182	d=120	E=158	F=120	G=134	H=195	L=190	M=155	N=155
P=114	X=133	Y=9x16	Z=133								

Wiring diagram

230/400V



400/690V



MDI 18/8 T2 0,55kW

Series general data MDI



MANUFACTURING FEATURES:

- Welded stainless steel AISI 304 housing.
- Stainless steel single inlet forward curved impeller.
- Standard asynchronous squirrel-cage motor with IP-55 protection and Class F insulation. Manufactured with standard voltages: 230V 50Hz in single phase motors and 230/400V 50Hz in three phase motors.

APPLICATIONS:

Designed for inline installation, they are suitable for:

- Industrial applications, extraction or injection of air.
- Cooling of machines and parts.
- Clean air transport.
- Corrosive air transport.
- Maximum working temperature: carried air: 130°C, ambient 1ph 50°C, 3ph 60°C.

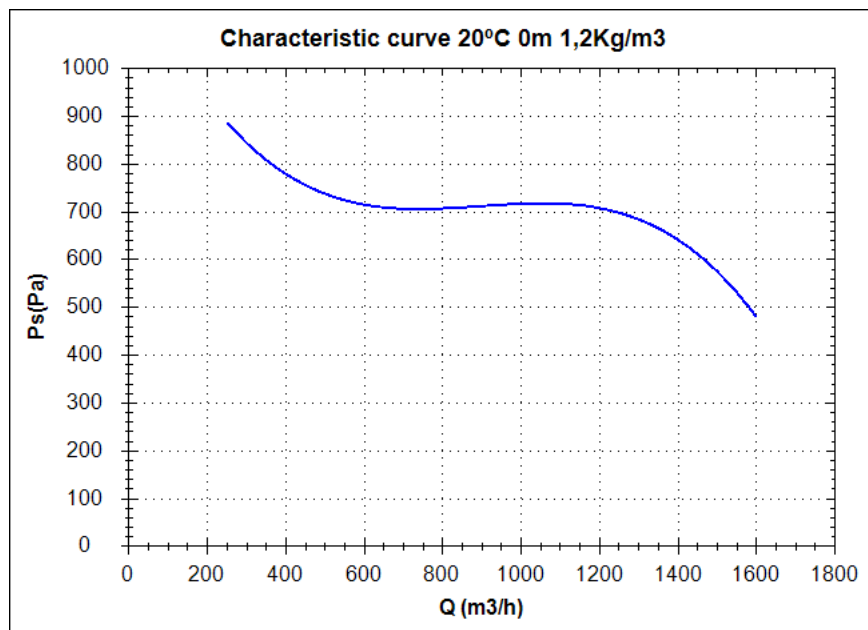
UNDER REQUEST:

- 60Hz fans and special voltages.
- 2 speed motors.
- Flameproof and explosionproof fans with ATEX certified motors.
- Fans provided with cooling disk for high temperatures.

Series accessories MDI



Characteristic curve



Design point

Q (m³/h)	
Ps(Pa)	

Service point

Impeller rpm	
Max. temp.(°C)	
Q (m³/h)	
Ps(Pa)	
Pd(Pa)	
Pt(Pa)	
Air speed(m/s)	

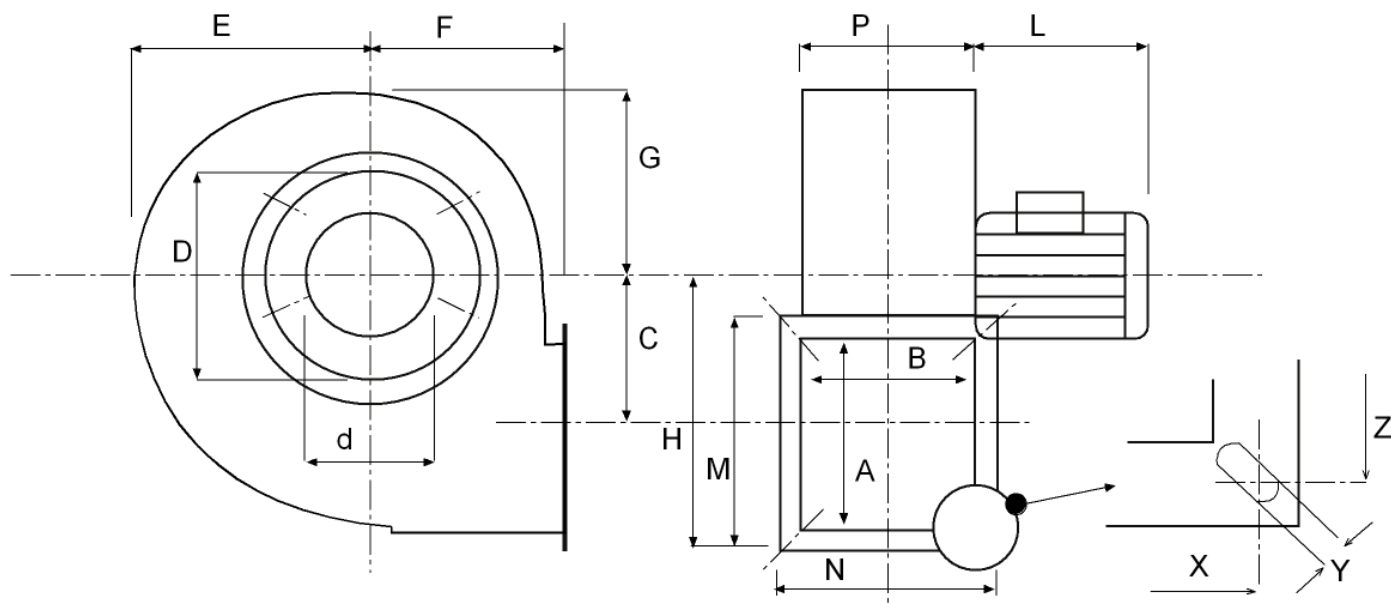
Technical data

Impeller rpm	2800
Motor rpm	2800
Approx. weight(kg)	10,2
Maximum flow rate(m³/h)	1600

Power(kW)	0,55
Imax 230V(A)	2,33
Imax 400V(A)	1,35
Imax 690V(A)	-

MDI 18/8 T2 0,55kW

dimensions diagram

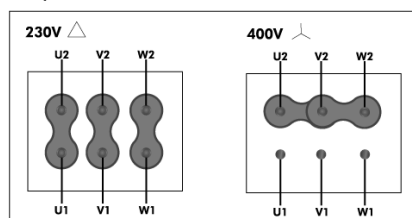


Dimensions (mm)

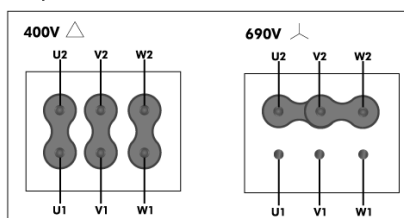
A=110	B=110	C=115	D=200	d=140	E=158	F=120	G=134	H=195	L=215	M=155	N=155
P=114	X=133	Y=9X16	Z=133								

Wiring diagram

230/400V



400/690V



MDI 18/8 T4 0,18kW

Series general data MDI



MANUFACTURING FEATURES:

- Welded stainless steel AISI 304 housing.
- Stainless steel single inlet forward curved impeller.
- Standard asynchronous squirrel-cage motor with IP-55 protection and Class F insulation. Manufactured with standard voltages: 230V 50Hz in single phase motors and 230/400V 50Hz in three phase motors.

APPLICATIONS:

Designed for inline installation, they are suitable for:

- Industrial applications, extraction or injection of air.
- Cooling of machines and parts.
- Clean air transport.
- Corrosive air transport.
- Maximum working temperature: carried air: 130°C, ambient 1ph 50°C, 3ph 60°C.

UNDER REQUEST:

- 60Hz fans and special voltages.
- 2 speed motors.
- Flameproof and explosionproof fans with ATEX certified motors.
- Fans provided with cooling disk for high temperatures.

Series accessories MDI



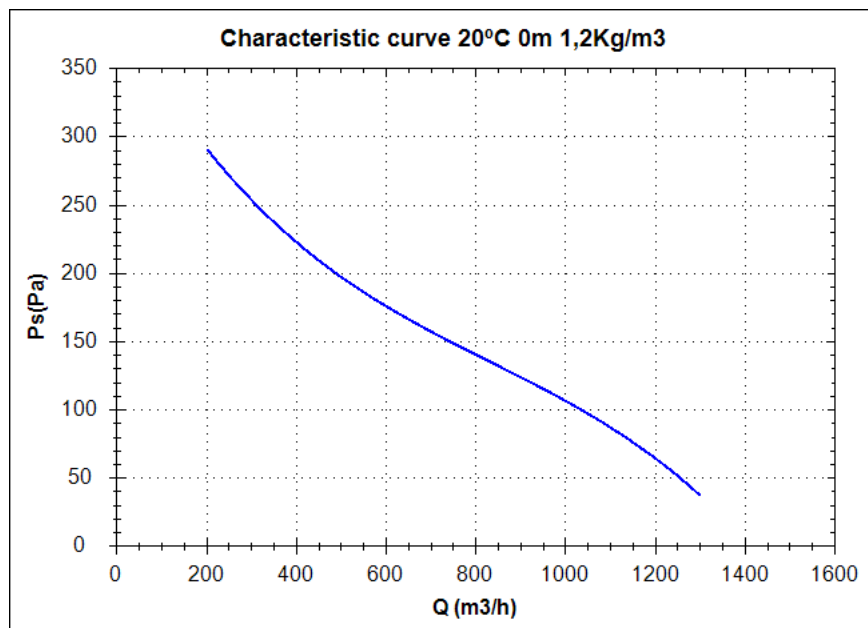
RFS

INT

PE

RAI

Characteristic curve



Design point

Q (m³/h)	
Ps(Pa)	

Service point

Impeller rpm	
Max. temp.(°C)	
Q (m³/h)	
Ps(Pa)	
Pd(Pa)	
Pt(Pa)	
Air speed(m/s)	

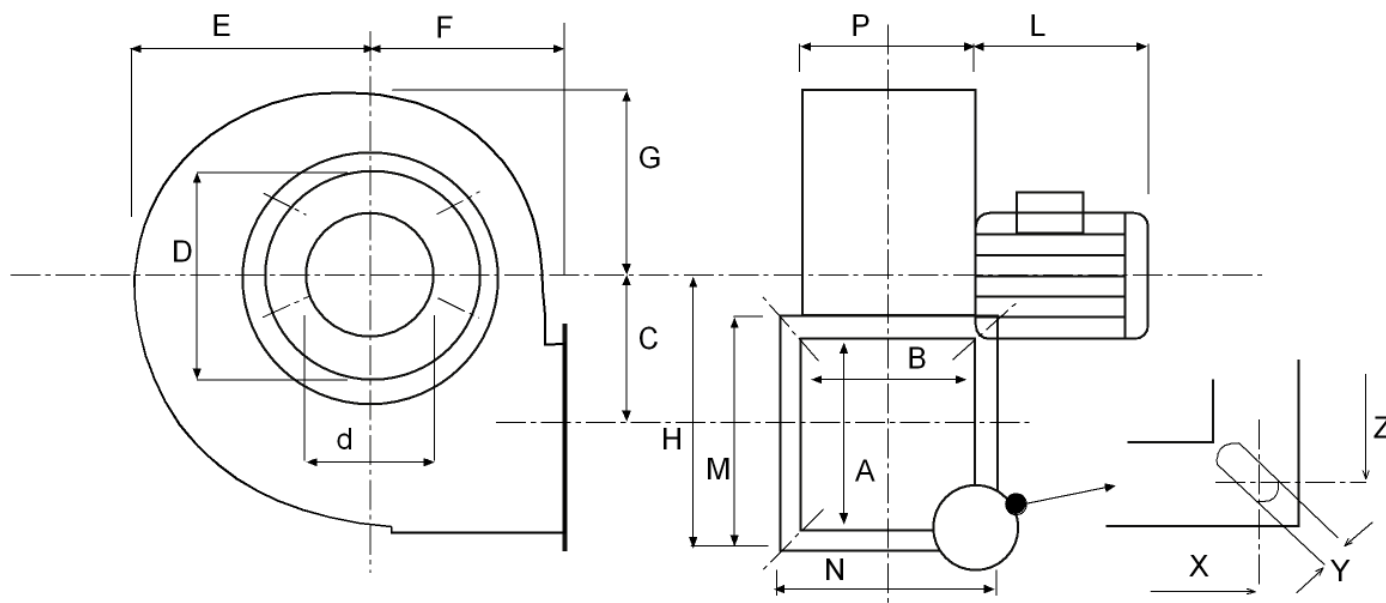
Technical data

Impeller rpm	1400
Motor rpm	1400
Approx. weight(kg)	9,7
Maximum flow rate(m³/h)	1266

Power(kW)	0,18
Imax 230V(A)	1,12
Imax 400V(A)	0,65
Imax 690V(A)	-

MDI 18/8 T4 0,18kW

dimensions diagram

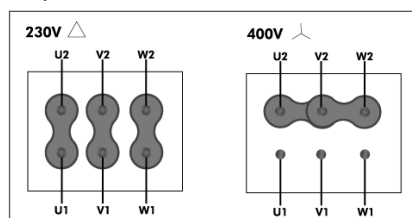


Dimensions (mm)

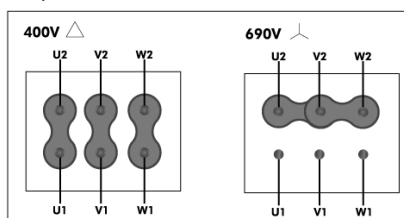
A=110	B=110	C=115	D=200	d=140	E=158	F=120	G=134	H=195	L=190	M=155	N=155
P=114	X=133	Y=9X16	Z=133								

Wiring diagram

230/400V



400/690V



MDI 20/10 T2 1,1kW

Series general data MDI



MANUFACTURING FEATURES:

- Welded stainless steel AISI 304 housing.
- Stainless steel single inlet forward curved impeller.
- Standard asynchronous squirrel-cage motor with IP-55 protection and Class F insulation. Manufactured with standard voltages: 230V 50Hz in single phase motors and 230/400V 50Hz in three phase motors.

APPLICATIONS:

Designed for inline installation, they are suitable for:

- Industrial applications, extraction or injection of air.
- Cooling of machines and parts.
- Clean air transport.
- Corrosive air transport.
- Maximum working temperature: carried air: 130°C, ambient 1ph 50°C, 3ph 60°C.

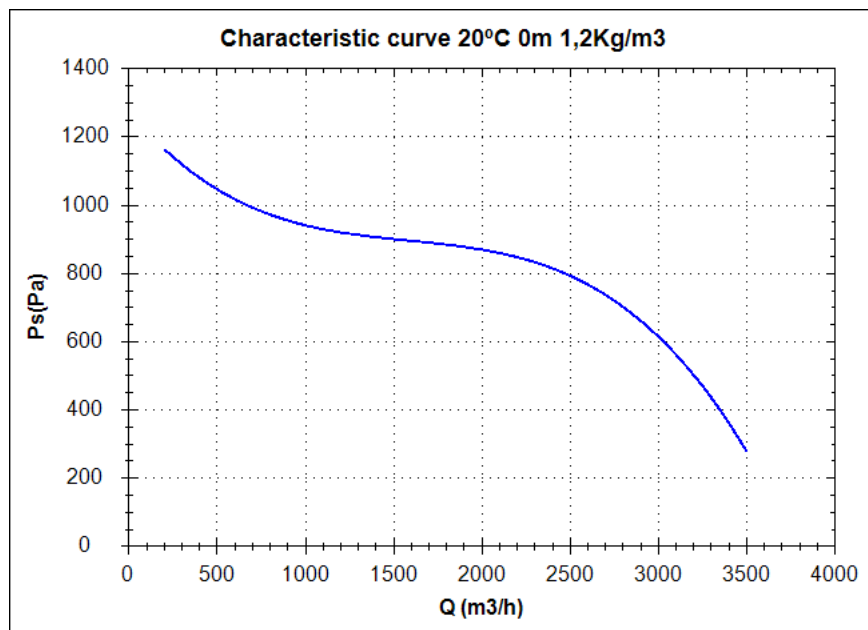
UNDER REQUEST:

- 60Hz fans and special voltages.
- 2 speed motors.
- Flameproof and explosionproof fans with ATEX certified motors.
- Fans provided with cooling disk for high temperatures.

Series accessories MDI



Characteristic curve



Design point

Q (m ³ /h)	
Ps(Pa)	

Service point

Impeller rpm	
Max. temp.(°C)	
Q (m ³ /h)	
Ps(Pa)	
Pd(Pa)	
Pt(Pa)	
Air speed(m/s)	

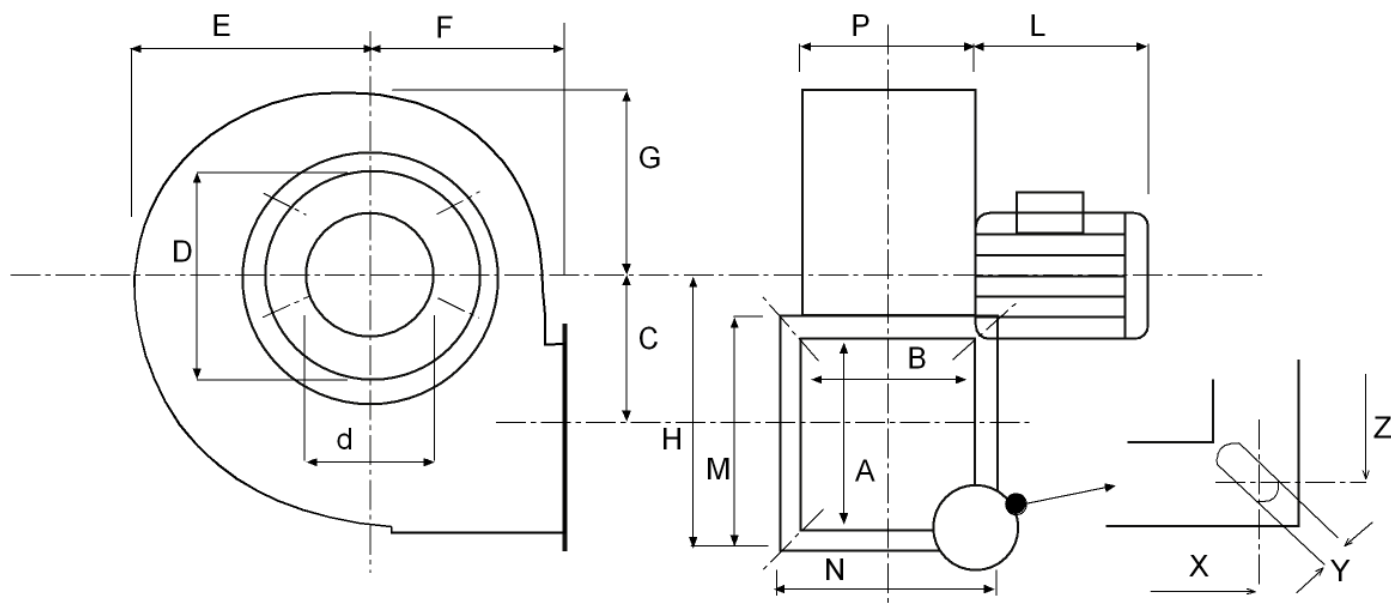
Technical data

Impeller rpm	2800
Motor rpm	2800
Approx. weight(kg)	19
Maximum flow rate(m ³ /h)	3500

Power(kW)	1,1
Imax 230V(A)	4,42
Imax 400V(A)	2,55
Imax 690V(A)	-

MDI 20/10 T2 1,1kW

dimensions diagram

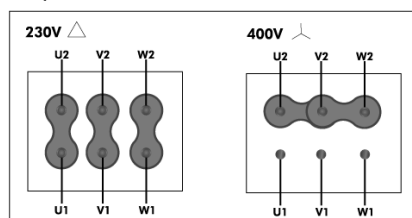


Dimensions (mm)

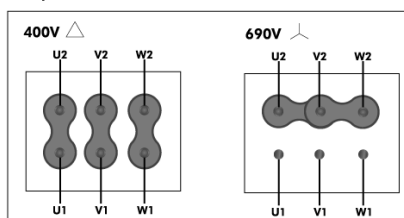
A=140	B=140	C=145	D=220	d=170	E=190	F=155	G=160	H=240	L=250	M=190	N=190
P=144	X=165	Y=9X16	Z=165								

Wiring diagram

230/400V



400/690V



MDI 20/10 T4 0,25kW

Series general data MDI



MANUFACTURING FEATURES:

- Welded stainless steel AISI 304 housing.
- Stainless steel single inlet forward curved impeller.
- Standard asynchronous squirrel-cage motor with IP-55 protection and Class F insulation. Manufactured with standard voltages: 230V 50Hz in single phase motors and 230/400V 50Hz in three phase motors.

APPLICATIONS:

Designed for inline installation, they are suitable for:

- Industrial applications, extraction or injection of air.
- Cooling of machines and parts.
- Clean air transport.
- Corrosive air transport.
- Maximum working temperature: carried air: 130°C, ambient 1ph 50°C, 3ph 60°C.

UNDER REQUEST:

- 60Hz fans and special voltages.
- 2 speed motors.
- Flameproof and explosionproof fans with ATEX certified motors.
- Fans provided with cooling disk for high temperatures.

Series accessories MDI



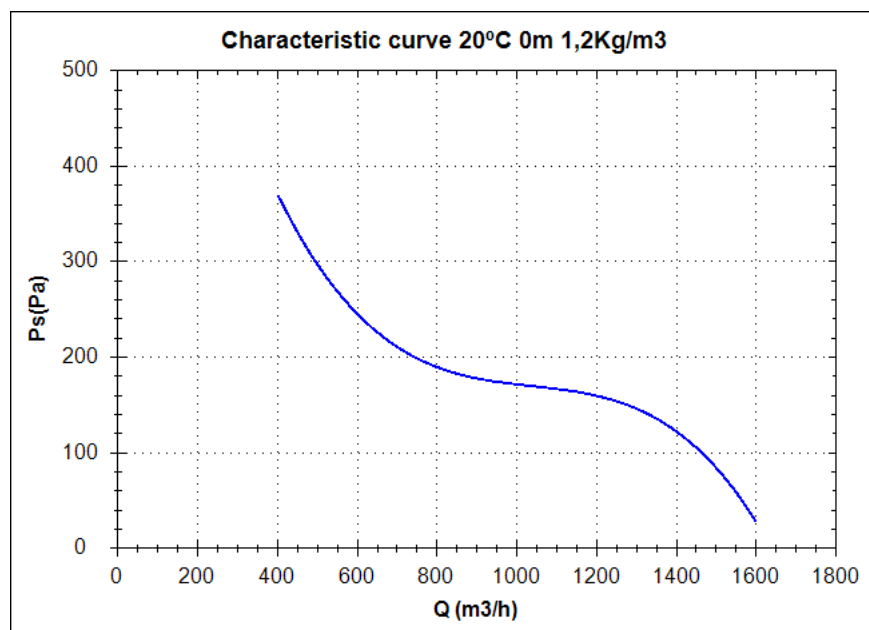
RFS

INT

PE

RAI

Characteristic curve



Design point

Q (m ³ /h)	
Ps(Pa)	

Service point

Impeller rpm	
Max. temp.(°C)	
Q (m ³ /h)	
Ps(Pa)	
Pd(Pa)	
Pt(Pa)	
Air speed(m/s)	

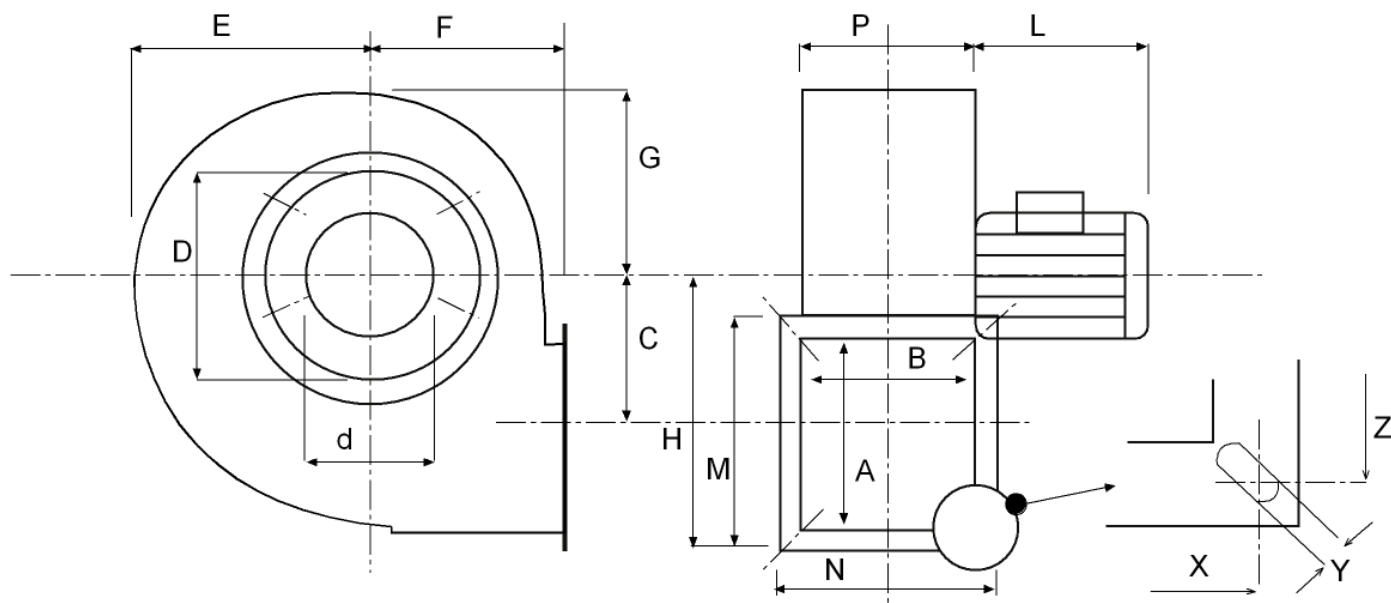
Technical data

Impeller rpm	1400
Motor rpm	1400
Approx. weight(kg)	11
Maximum flow rate(m ³ /h)	1600

Power(kW)	0,25
Imax 230V(A)	1,44
Imax 400V(A)	0,83
Imax 690V(A)	-

MDI 20/10 T4 0,25kW

dimensions diagram

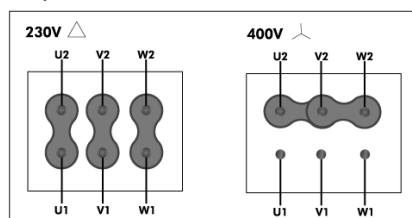


Dimensions (mm)

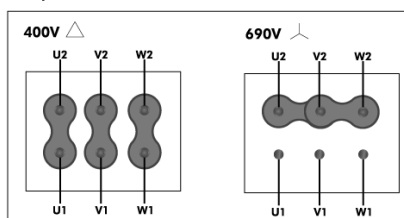
A=140	B=140	C=145	D=220	d=170	E=190	F=155	G=160	H=240	L=190	M=190	N=190
P=144	X=165	Y=9X16	Z=165								

Wiring diagram

230/400V



400/690V



MDI 25/13 T2 2,2kW

Series general data MDI



MANUFACTURING FEATURES:

- Welded stainless steel AISI 304 housing.
- Stainless steel single inlet forward curved impeller.
- Standard asynchronous squirrel-cage motor with IP-55 protection and Class F insulation. Manufactured with standard voltages: 230V 50Hz in single phase motors and 230/400V 50Hz in three phase motors.

APPLICATIONS:

Designed for inline installation, they are suitable for:

- Industrial applications, extraction or injection of air.
- Cooling of machines and parts.
- Clean air transport.
- Corrosive air transport.
- Maximum working temperature: carried air: 130°C, ambient 1ph 50°C, 3ph 60°C.

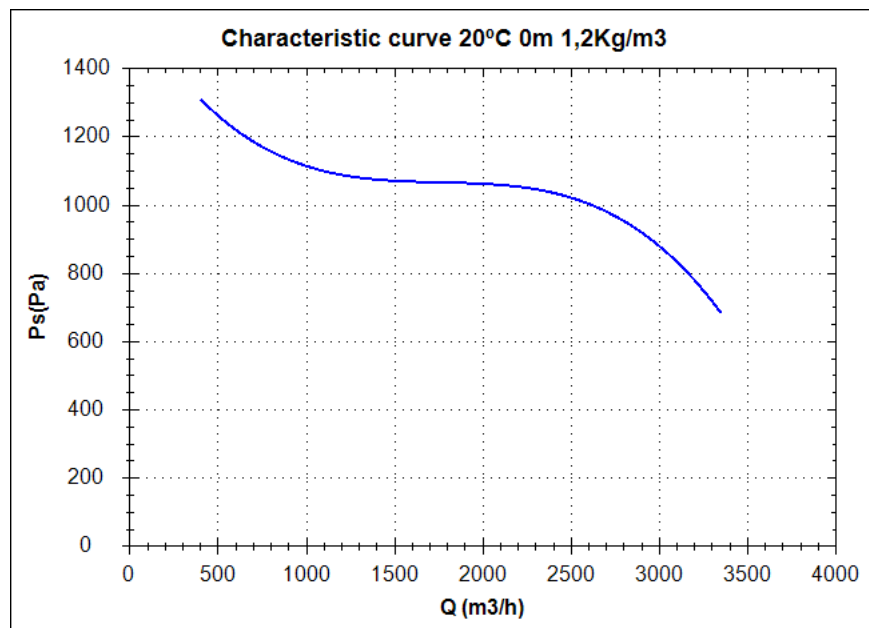
UNDER REQUEST:

- 60Hz fans and special voltages.
- 2 speed motors.
- Flameproof and explosionproof fans with ATEX certified motors.
- Fans provided with cooling disk for high temperatures.

Series accessories MDI



Characteristic curve



Design point

Q (m³/h)	
Ps(Pa)	

Service point

Impeller rpm	
Max. temp.(°C)	
Q (m³/h)	
Ps(Pa)	
Pd(Pa)	
Pt(Pa)	
Air speed(m/s)	

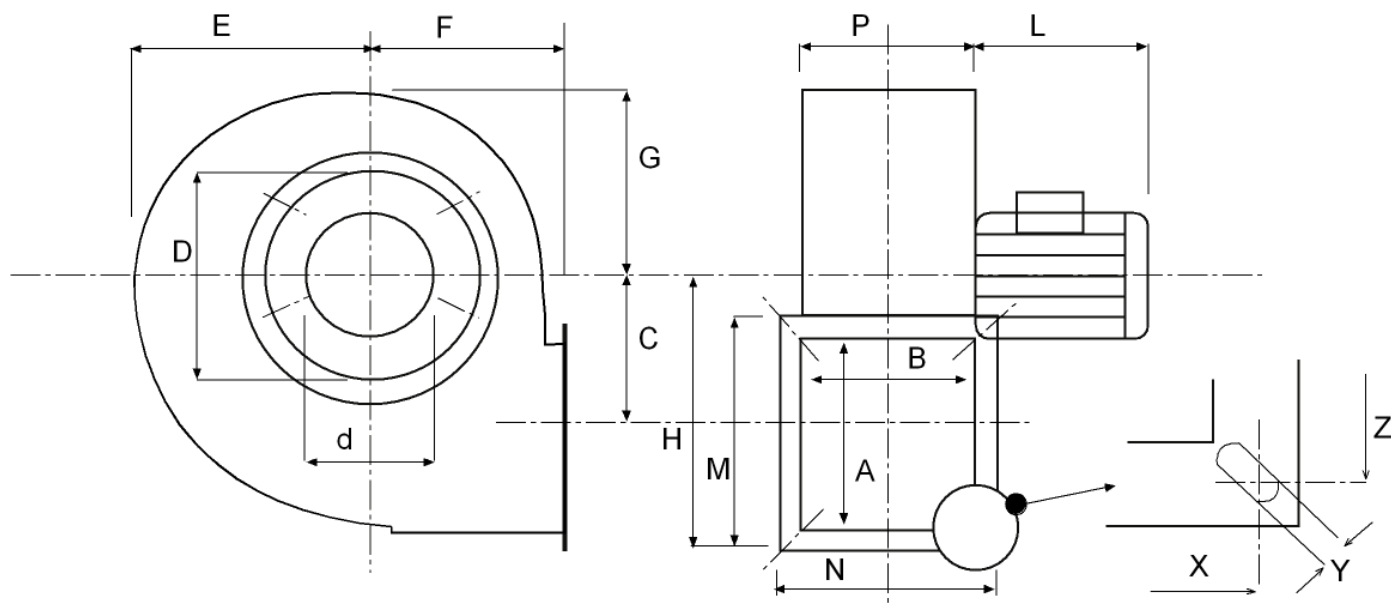
Technical data

Impeller rpm	2800
Motor rpm	2800
Approx. weight(kg)	32
Maximum flow rate(m³/h)	3350

Power(kW)	2,2
Imax 230V(A)	8,61
Imax 400V(A)	4,98
Imax 690V(A)	-

MDI 25/13 T2 2,2kW

dimensions diagram

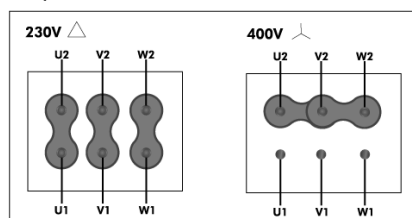


Dimensions (mm)

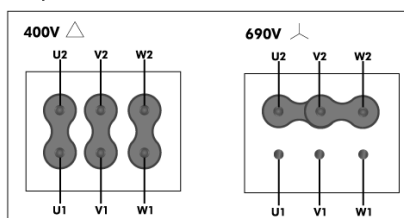
A=200	B=200	C=185	D=280	d=250	E=245	F=180	G=200	H=310	L=230	M=250	N=250
P=204	X=230	Y=9	Z=230								

Wiring diagram

230/400V



400/690V



MDI 25/13 T4 0,55kW

Series general data MDI



MANUFACTURING FEATURES:

- Welded stainless steel AISI 304 housing.
- Stainless steel single inlet forward curved impeller.
- Standard asynchronous squirrel-cage motor with IP-55 protection and Class F insulation. Manufactured with standard voltages: 230V 50Hz in single phase motors and 230/400V 50Hz in three phase motors.

APPLICATIONS:

Designed for inline installation, they are suitable for:

- Industrial applications, extraction or injection of air.
- Cooling of machines and parts.
- Clean air transport.
- Corrosive air transport.
- Maximum working temperature: carried air: 130°C, ambient 1ph 50°C, 3ph 60°C.

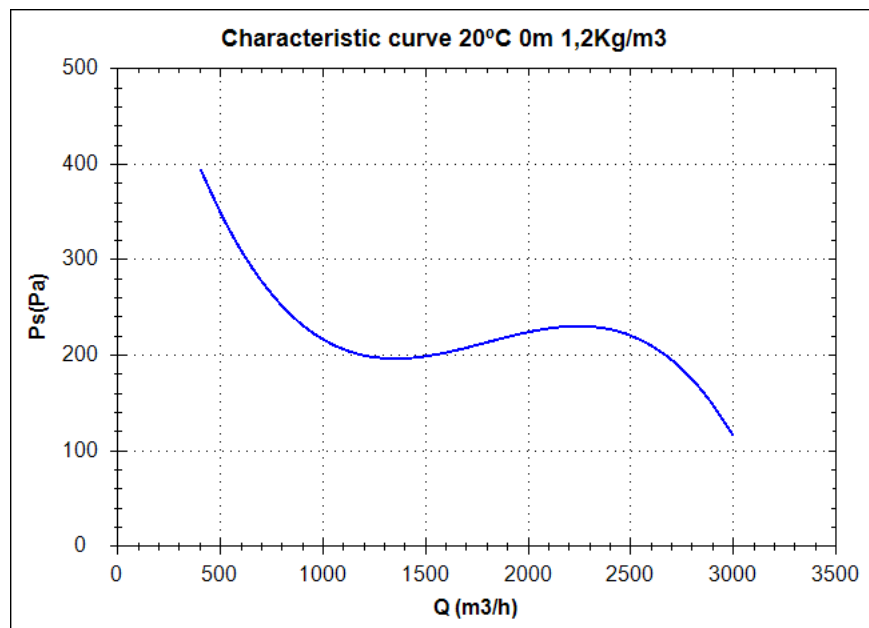
UNDER REQUEST:

- 60Hz fans and special voltages.
- 2 speed motors.
- Flameproof and explosionproof fans with ATEX certified motors.
- Fans provided with cooling disk for high temperatures.

Series accessories MDI



Characteristic curve



Design point

Q (m³/h)	
Ps(Pa)	

Service point

Impeller rpm	
Max. temp.(°C)	
Q (m³/h)	
Ps(Pa)	
Pd(Pa)	
Pt(Pa)	
Air speed(m/s)	

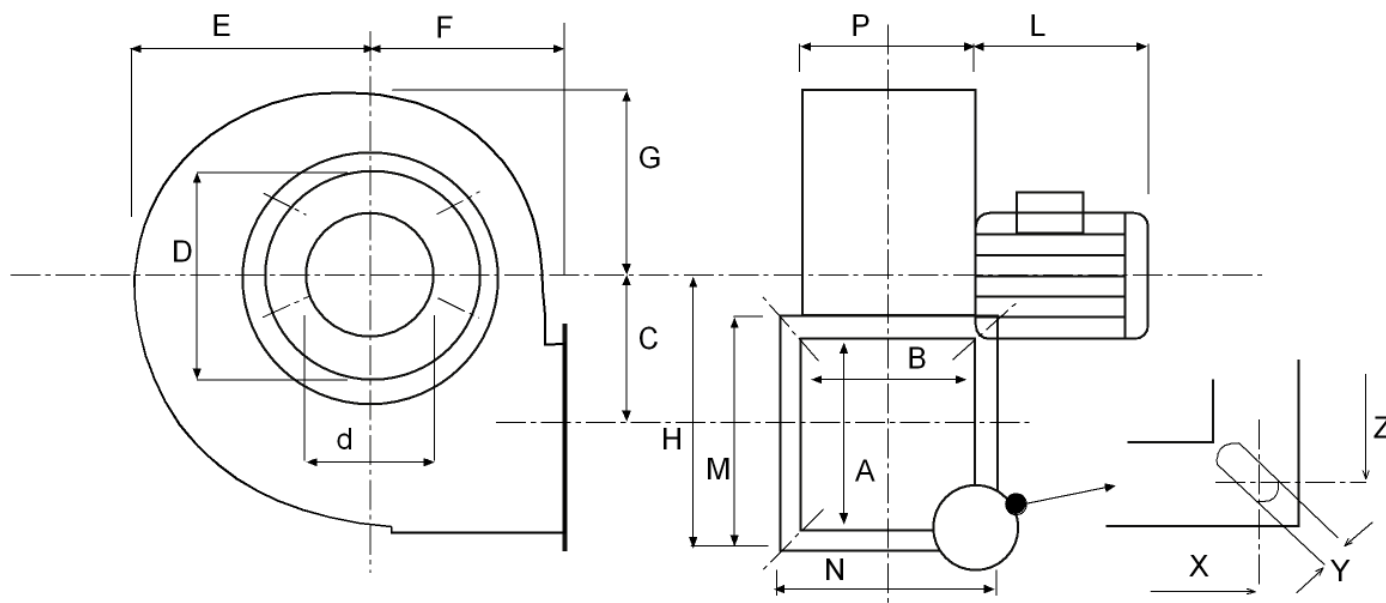
Technical data

Impeller rpm	1400
Motor rpm	1400
Approx. weight(kg)	24
Maximum flow rate(m³/h)	3000

Power(kW)	0,55
Imax 230V(A)	2,69
Imax 400V(A)	1,56
Imax 690V(A)	-

MDI 25/13 T4 0,55kW

dimensions diagram

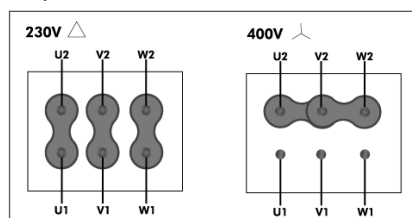


Dimensions (mm)

A=200	B=200	C=185	D=280	d=250	E=245	F=180	G=200	H=310	L=230	M=250	N=250
P=204	X=230	Y=9	Z=230								

Wiring diagram

230/400V



400/690V

