



Data sheet side channel blowers

Series G-2



Side channel blowers

Single-phase current 50/60 Hz

Vacuum operation

Types 2-210 to 2-710

Power range:

output:

Total pressure difference:

Suction capacity:

0,37 to 2,55 kW
to $\Delta p=280$ mbar(P)
80 to 380 m³/h

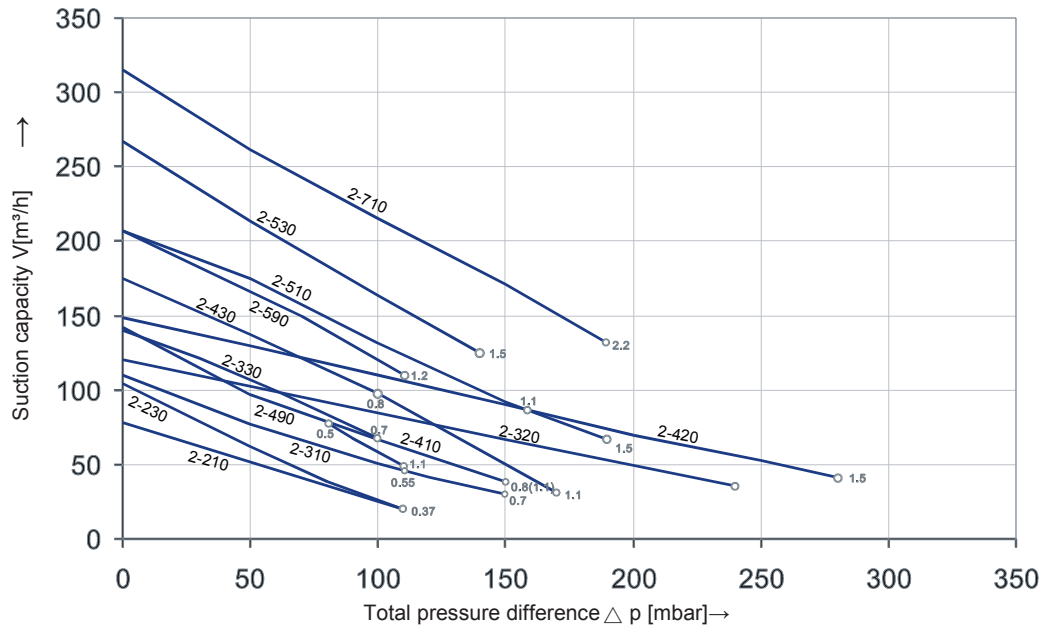


Selection and ordering data

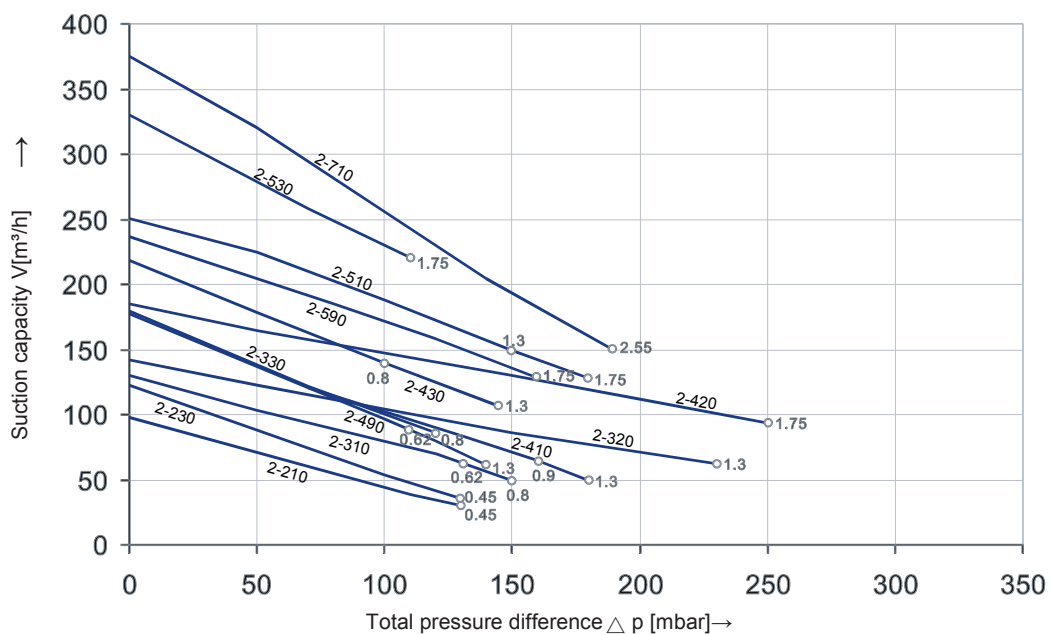
Order No.	Motor(IP55)				Weight approx.	Sound-pressure level
	Fre- quency	output	voltage	current		
	Hz	kW	V	A	kg	dB(A)
2-210-7AA11	50	0.37	230	2.7	11	53
	60	0.45	230	3.0		56
2-210-7AV15	50	0.37	115/230	5.4/2.7	11	53
	60	0.45	115/230	6.0/3.0		56
2-230-7AA11	50	0.37	230	2.7	11	54
	60	0.45	230	3.0		57
2-230-7AV15	50	0.37	115/230	5.4/2.7	11	54
	60	0.45	115/230	6.0/3.0		57
2-310-7AA01	50	0.55	230	3.7	13	55
	60	0.62	230	4.5		57
2-310-7AA11	50	0.7	230	4.8	14	55
	60	0.8	230	4.1		57
2-320-7HA31	50	1.1	230	7.3	17	58
	60	1.3	230	8.3		60
2-330-7AA11	50	0.7	230	4.8	14	58
	60	0.8	230	4.1		60
2-410-7AA11	50	0.8	230	5.2	15	63
	60	0.9	230	5.8		64
2-410-7AA21	50	1.1	230	7.3	16	63
	60	1.3	230	8.3		64
2-410-7AV25	50	1.1	115/230	14.6/7.3	16	63
	60	1.3	115/230	16.6/8.3		64
2-420-7HA31	50	1.5	230	9	26	66
	60	1.75	230	10		69
2-420-7AV45	50	1.5	115/230	22/11	27	66
	60	1.75	115/230	24/12		69
2-430-7AA11	50	0.8	230	5.2	16	64
	60	0.9	230	5.8		66
2-430-7AA21	50	1.1	230	7.3	17	64
	60	1.3	230	8.3		66
2-430-7AV25	50	1.1	115/230	14.6/7.3	16	64
	60	1.3	115/230	16.6/8.3		65
2-490-7AA11	50	0.5	230	4.1	16	63
2-490-7AB16	60	0.62	115	10	16	64
2-490-7AV25	50	1.1	115/230	14.6/7.3	17	63
	60	1.3	115/230	16.6/8.3		64
2-510-7AA11	50	1.1	230	7.3	21	64
	60	1.3	230	8.3		70
2-510-7AA21	50	1.5	230	9	24	64
	60	1.75	230	10		70

2-530-7AA21	50	1.5	230	9	26	65
	60	1.75	230	10		71
2-530-7AV35	50	1.5	115/230	22.0/11.0	26	65
	60	1.75	115/230	24.0/12.0		71
2-590-7AA21	50	1.2	230	7.9	21	64
2-590-7AB26	60	1.75	115	21.5	21	70
2-710-7AA11	50	2.2	230	12.8	30	72
	60	2.55	230	12.8		74

50 Hz Selection diagram

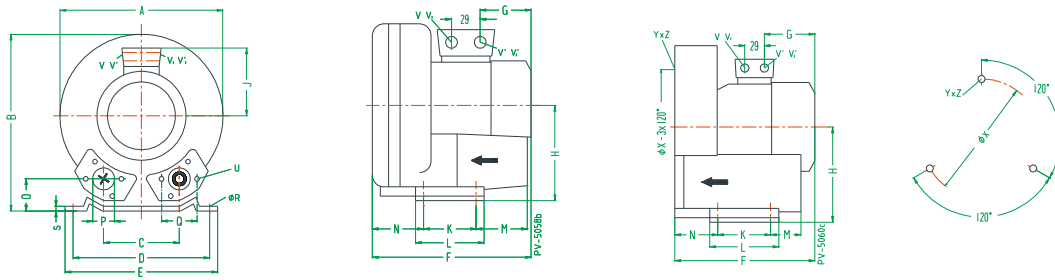


60 Hz Selection diagram



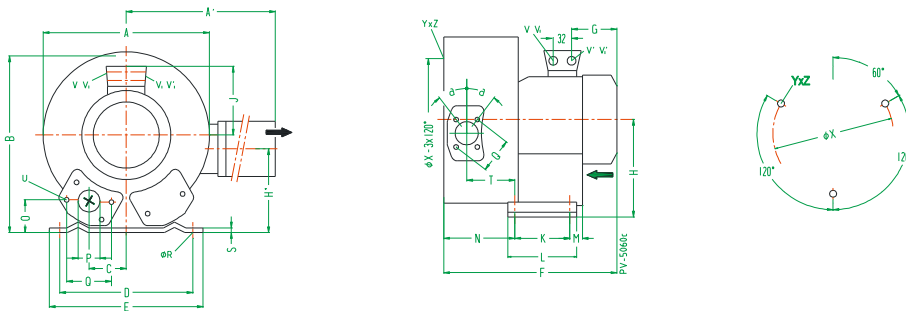
Dimensions [mm]

2-210
2-230
2-310
2-330



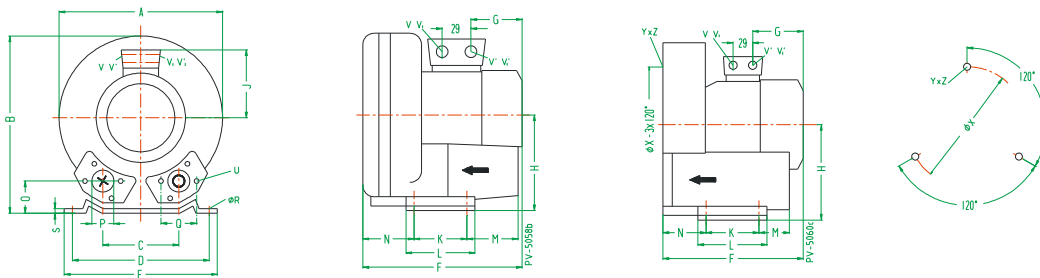
Type	Phases	Dimensions															P	Q	øR	S	U	V ₍₁₋₃₎	V ₍₁₋₂₎	V ₍₁₋₃₎	V ₍₁₋₂₎	YxZ	X-Holes	
		A	B	C	D	E	F	G	H	J	K	L	M	N	O	α											øX	
2-210-7AV15	1~	246	247	90	205	230	258	135	128	111	83	108	75	71	39	G1 _{1/4} (150st/depth)	64	10	2.5	M8x17	M16x1.5	M25x1.5	-	-	M8x15	0°/120°/240°	140	
2-210-7AA11	1~																			M16x1.5	M25x1.5	-	-	-	-	-		
2-230-7AV15	1~						287	135		111					82					M16x1.5	M25x1.5	M25-1 F	M16-1 F					
2-230-7AA11	1~																											
2-310-7AA01	1~	288	272	93			280		141						82	89	41			M25x1.5	M16x1.5	-	-	-	-	-		
2-310-7AA11	1~																											
2-330-7AA11	1~						278								85					M25x1.5	M16x1.5	M25x1.5	M16x1.5					

2-320
2-420



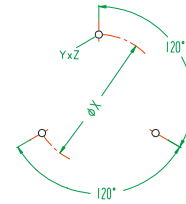
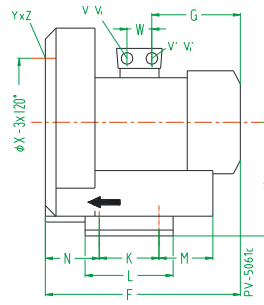
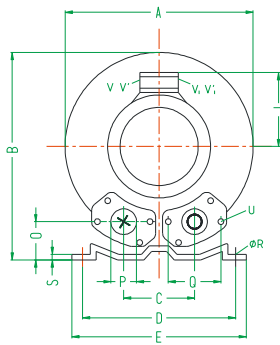
Type	Phases	Dimensions															P	Q	øR	S	T	U	V ₍₁₋₃₎	V ₍₁₋₂₎	V ₍₁₋₃₎	V ₍₁₋₂₎	α	øX	YxZ	X-Holes	
		A	A'	B	C	D	E	F	G	H	H'	J	K	L	M	N														O	α
2-320-7HA31	1~	293	324	286	47	205	230	354	180	141	114	120	83	108	82	138	41	G1 _{1/4} (150st/depth)	64	10	2.5	92	M8x17	M25x1.5	M16x1.5	-	-	27°	180	M8x15	51°/171°/281°
2-420-7HA31	1~	322	324	315	68	225	255	401	191	154	153	128	95	130	73	151	45	G1 _{1/4} (150st/depth)	72	12	3	104	M8x19	M16x1.5	M25x1.5	-	-	28°	174		
2-420-7AV45	1~																														

2-410
2-430
2-490



Type	Phases	Dimensions															P	Q	øR	S	U	V ₍₁₋₃₎	V ₍₁₋₂₎	V ₍₁₋₃₎	V ₍₁₋₂₎	YxZ	X-Holes			
		A	B	C	D	E	F	G	H	J	K	L	M	N	O	α											øX			
2-410-7AA11	1~	288	302	115	225	255	294	180	154	120	95	130	70	75	48	G1 _{1/4} (150st/depth)	72	12	3	M8x19	M16x1.5	M25x1.5	-	-	M8x15	0°/120°/240°	174			
2-410-7AA21	1~																													
2-410-7AV25	1~																													
2-430-7AA11	1~					311																								
2-430-7AA21	1~																													
2-430-7AV25	1~																													
2-490-7AA11	1~						289	135		111																				
2-490-7AB16	1~																													
2-490-7AV25	1~						311	180		120																				

2-510
2-530
2-590
2-710



Type	Phases	A	B	C	D	E	F	G	H	J	K	L	M	N	O	eP	Q	eR	S	U	V ₀₋₄	V ₁₋₄	V ₁₀₋₄	V ₁₅₋₄	YxZ	X-Holes		
		øX	W																									
2-510-7AA11	1-	334	337	120	280	295	314	180	175	120	115	155	96	87	48	55	63	14	4	M8x17	M16x1.5	M25x1.5	-	-	M8x20	0°/120°/240°	200	29
2-510-7AA21	1-						345	191		128											M16x1.5	M25x1.5	-	-				
2-510-7AV35	1-																											
2-530-7AA11	1-						334	180		120											M16x1.5	M25x1.5	-	-				
2-530-7AA21	1-						365	191		128																		
2-530-7AV35	1-																											
2-590-7AA21	1-																											
2-590-7AB26	1-																											
2-710-7AA11	1-	382	384	125	290	325	377		197		140	180	84	109	54	55	63	15	4.5		M25x1.5	M16x1.5	-	-	M10x20		240	29

Performance curves

The performance curves are valid for pumping air at 15 °C at the inlet flanges with an air pressure of 1,013 mbar and a tolerance of ±10%. The total pressure differences are valid up to an intake and ambient temperature of 25 °C.

Retention of validity:

Changes in particular the quoted performance curve, data and weights without prior notice. The figures are without obligations.

Sound pressure level:

Measuring surface sound-pressure level acc. to EN 216801, measured at a distance of 1 m. The pump is throttled to a medium inlet pressure, a hose is connected to the discharge side, and a vacuum-relief valve is not fitted.