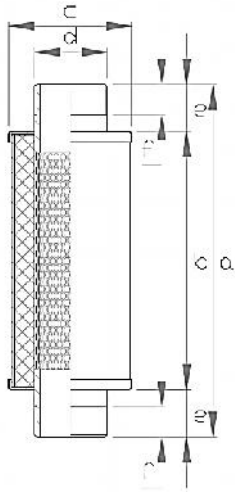
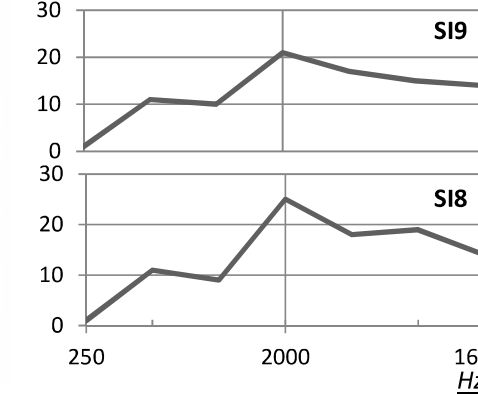


INLINE SILENCER – SI/END MOUNTING SILENCER - SS

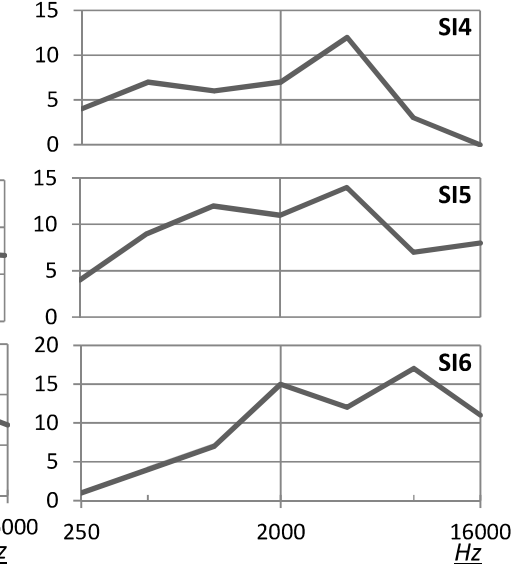
Inline silencer assembly with GAS threaded sleeves at both ends



dB(A)



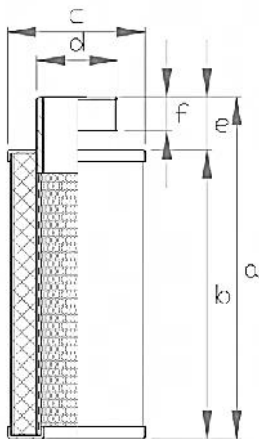
dB(A)



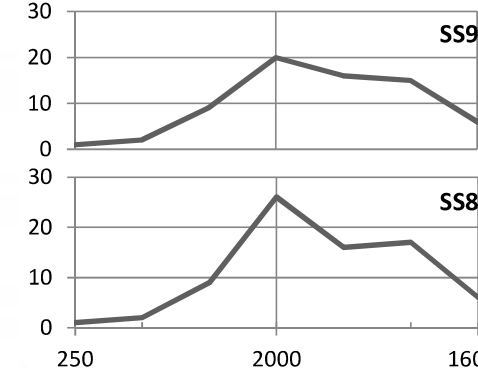
DIMENSIONS (SI)

Type	d	a	b	c	e	f	WEIGHT [kg]
SI 4	1" ¼	240	140	70	50	15	0,54
SI 5	1" ½	230	170	80	30	20	0,45
SI 6	2"	260	200	90	30	20	0,45
SI 8	3"	570	400	152	85	20	2,90
SI 9	4"	485	415	168	27	20	-

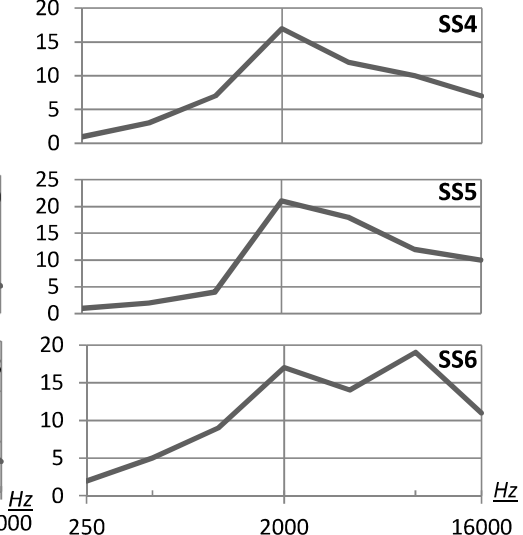
End mounting silencer with GAS threaded sleeve at one end..



dB(A)



dB(A)



DIMENSIONS (SS)

Type	d	a	b	c	e	f	WEIGHT [kg]
SS 4	1" ¼	190	140	70	50	15	0,54
SS 5	1" ½	200	170	80	30	20	0,45
SS 6	2"	230	200	90	30	20	0,45
SS 8	3"	485	400	152	85	20	2,10
SS 9	4"	465	430	169	27	20	-

Steel manufactured (apart from SI 9 / SS 9 - entirely in aluminium) with sound absorbing polyuretane element, the noise is reduced by adsorption.

Dimensions in mm - FOR REFERENCE ONLY