

VACUUM/PRESSURE RELIEF VALVE - VRL

The valves have been designed for low pressure / vacuum range with minimal hysteresis (difference between the value at which the valve start to open and the value at which the valve is fully opened). The valves are supplied with different springs to maximise their efficiency. These compact valves made of aluminium alloy, are both easy to install and set-up. Valves are designed to operate in a wide range of flows. They are featured to divert an excess of primary flow through an external pipe when working in pressure conditions, and to pipe-in a secondary flow when working in vacuum conditions.

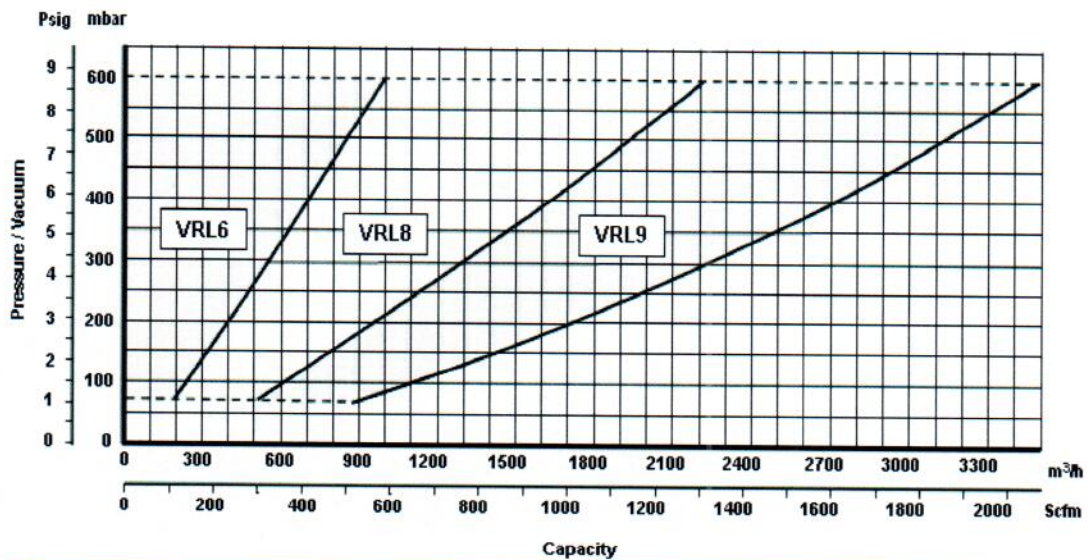
Maximum efficiency is achieved keeping operating values (flow vs pressure / vacuum value) within the **operating range** that refers to air having density equal to 1,23 kg/m³.

The VRL kit comes with an additional spring with greater winding.

For a correct usage please refer to the manual.

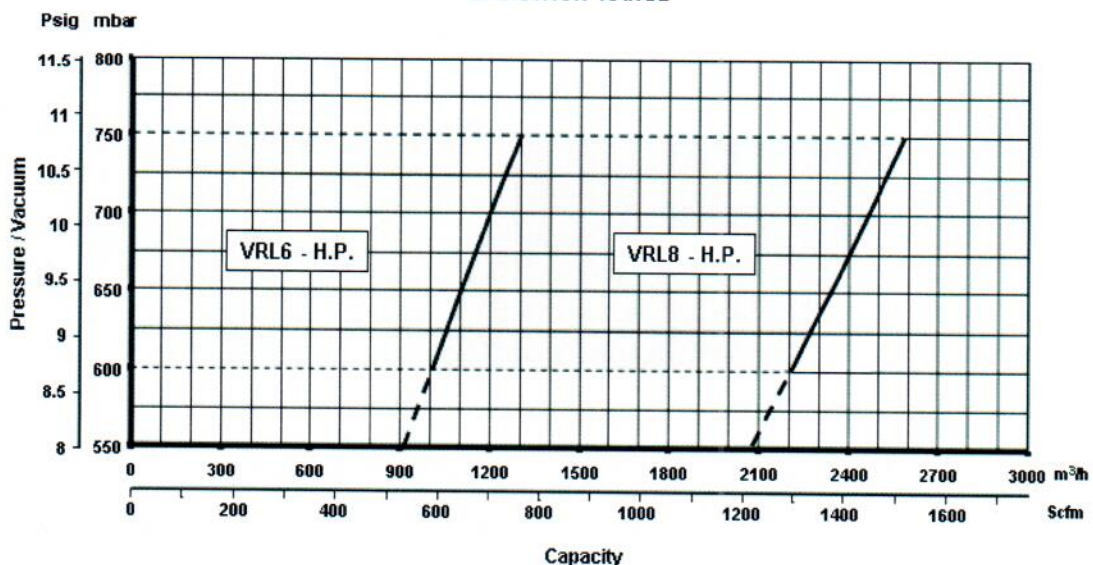
VRL6/VRL8/VRL9

OPERATION RANGE

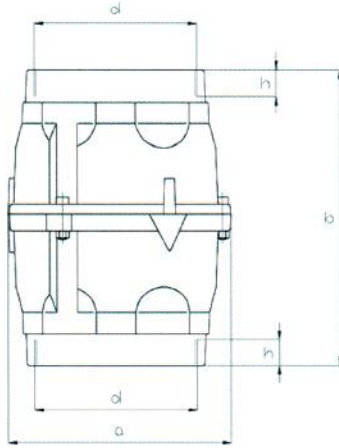


VRL6/VRL8 H.P.

OPERATION RANGE

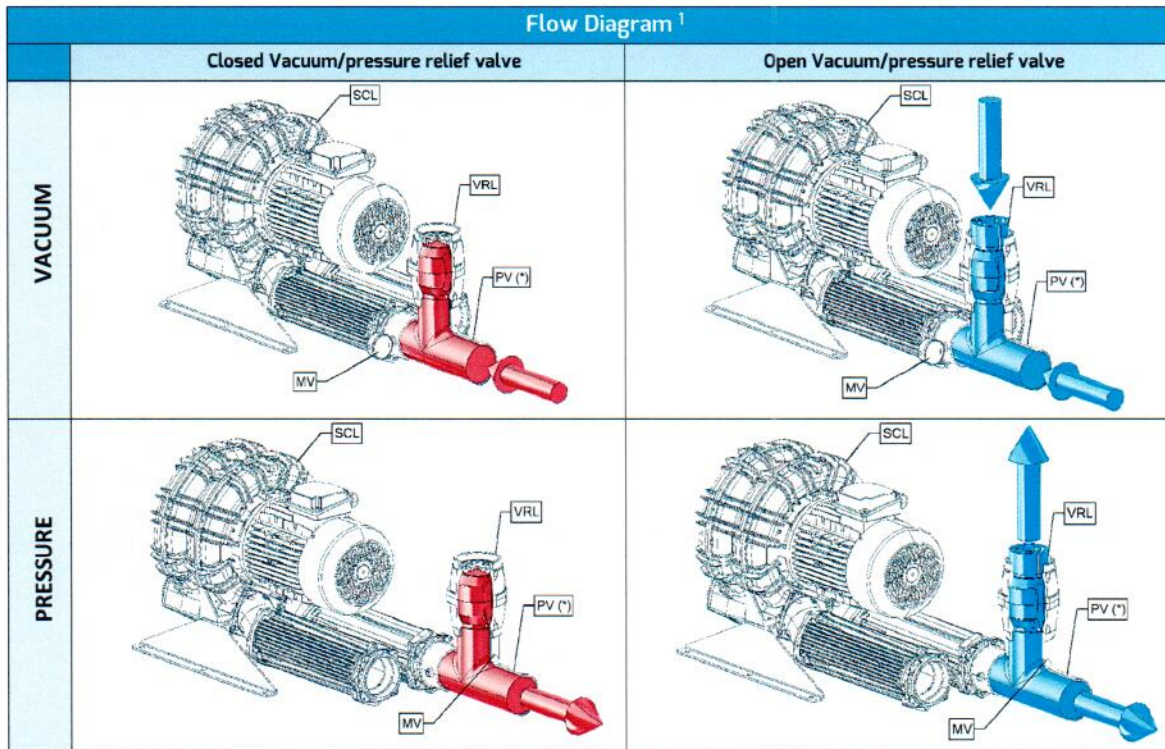


DIMENSIONS



VALVE	Mod.	DN	d	a	b	h	Weight Kg
VALVE	VRL6	50	G 2"	102	175	12	0.85
	VRL8	80	G 3"	135	190	15	1.90
	VRL9	100	G 4"	160	206	18	2.60

VALVE	Mod.	DN	d	a	b	h	Weight kg
VALVE	VRL6 - HP	50	G 2"	102	175	12	0.85
	VRL8 - HP	80	G 3"	135	190	15	1.90



¹ Caution: to read the correct value indicated on the pressure/vacuum gauge, position it between the silencer and the VRL valve.

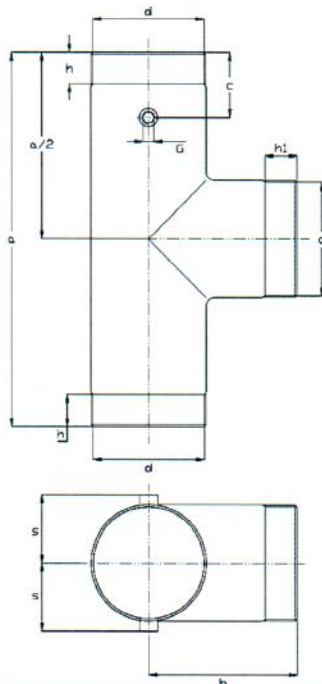
*See the relevant data sheet

VALVE HOLDER PV for vrl

The PV accessory is installed directly on the intake flange of the blower (suction) or on the outlet flange (feed) and is arranged for the attachment of the VRL valve, the MC manometer and the MV vacuum gauge.

CHARACTERISTICS

- Tip with "GAS" threading.
- Provided with G1/4" hole for manometer or vacuum gauge connection.
- Material AISI 304.
- Painted in colour RAL 7016.
- Suitable for the use of flexible sleeve MF.



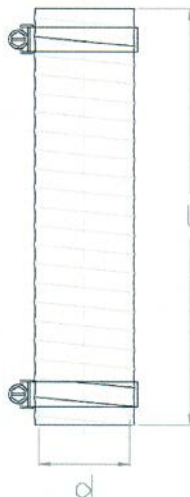
DIMENSIONS (PV)

Type	Dn	d	a	b	c
PV 66	2"	2"	227	95	35
PV 86	3"	2"	312	137	55
PV 88	3"	3"	310	130	55
PV 96	4"	2"	371	150	65
PV 98	4"	3"	370	173	65
PV 99	4"	4"	370	147	65
PV 109	5"	4"	370	175	65

Type	G	h	h1	s	WEIGHT kg
PV 66	1/4"	21.5	21.5	40	1,30
PV 86	1/4"	28	21.5	54	2,40
PV 88	1/4"	28	28	54	2,80
PV 96	1/4"	31.5	21.5	67	3,50
PV 98	1/4"	31.5	28	67	3,80
PV 99	1/4"	31.5	31.5	67	4,60
PV 109	1/4"	31.5	28	80	3,30

FLEXIBLE SLEEVE

Steel reinforced rubber - coated fibreglass flex tubing, including 2 adjustable hose clamps. Working temperature: -55 + +176 °C (-67 + +350 °F). Maximum working pressure: 3 bar (44 psi).



DIMENSIONS (FM)

Type	Dn	d	l	WEIGHT kg
FM 1	1/2"	20	200	0,15
FM 2	3/4"	26	200	0,06
FM 3	1"	32	200	0,08
FM 4	1" 1/4	45	200	0,12
FM 5	1" 1/2	50	250	0,12
FM 6	2"	64	250	0,18
FM 8	3"	89	330	0,20
FM 9	4"	114	330	0,33
FM 10	5"	140	330	0,50

SLEEVE

Aluminum alloy or steel flanged sleeve coupling.

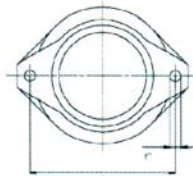
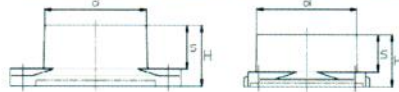


Fig.1

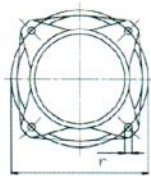


Fig.2

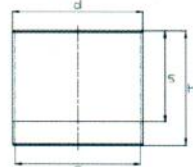


Fig.3

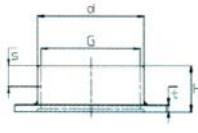
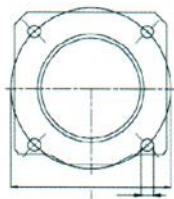


Fig.4



DIMENSIONS (MP)

Type	Dn	d	G	H	i	r	s	Fig.	WEIGHT kg
MP 1	1/2"	21	1/2"G	100	-	-	85	3	0,10
MP 2	3/4"	27	3/4"G	100	-	-	85	3	0,10
MP 3	1"	33	-	35	55	6,5	25	1	0,07
MP 4	1" 1/4	42	-	35	75	6,5	25	1	0,10
MP 4V	1" 1/4	42	-	35	64	6,5	25	1	0,10
MP 5	1" 1/2	48	-	35	85	6,5	25	1	0,10
MP 5V	1" 1/2	48	-	35	75	6,5	25	1	0,10

Type	Dn	d	G	H	i	r	s	Fig.	WEIGHT kg
MP 6	2"	60	-	35	85	6,5	-	1	0,10
MP 8	3"	88	-	45	120	6,5	-	2	0,25
MP 9	4"	114	4"G	100	-	-	-	3	1,00
MP 10	5"	140	-	60	210	17	8	4	2,60
MP 10G	5"	140	5"G	60	210	17	8	4	2,60
MP 10N	5"	140	5" N	60	210	17	8	4	2,60

HOSE CONNECTION FLANGE FITTING FOR SCL K - PK

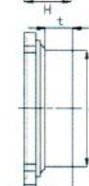
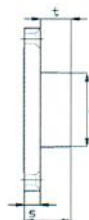
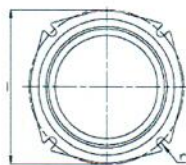
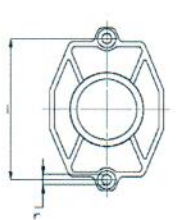
The PK accessory makes it possible to connect to the ducts without using a silencer section on the following blowers:

- SCL K-M5 applicable in delivery and intake;
- SCL K-TS applicable both in delivery and intake;
- SCL K-TD applicable in delivery and intake.
- For the SCL K-MD it is applicable only on the cover at the intake

CHARACTERISTICS

Aluminium alloy flange with hose connector.

Supplied with installation kit (seal, screws, bolts and spanner).



Type	Dn	d	H	i
PK 5	1" 1/2	48	30	92
PK 6	2"	60	50	110
PK 6A	2"	60	59,5	130
PK 8	3"	88	43	130
PK 9	4"	113	46	150

Type	r	t	s	Fig.	WEIGHT kg
PK 5	6,5	20	10	1	0,09
PK 6	8,5	35	10	1	0,09
PK 6A	9	35	11	2	0,09
PK 8	9	24	11	2	0,09
PK 9	9	27	11	2	0,38

DIMENSIONS (PK)

