

EUROVAC TIPPING VACUUM

FEATURES



The machine is suitable for vacuuming many different types of debris such as construction waste, concrete dust, ash and metal shavings.



Up to 125mm hose can be used as suction hose and the unit can be connected as a central vacuum unit to a central vacuum line of up to 152mm, depending on the power option.



All units are equipped with remote start capability for central vacuum cleaner operation.



The unit can be equipped with power options from 22 to 55 kW.

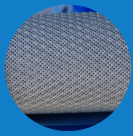


The suction unit is a high-pressure Robuschi 85 rotary piston blower.

It is an industrial vacuum cleaner equipped with a large waste container.

It can be used as a portable vacuum cleaner or integrated into a central vacuum system.





The filter cleaning is done by the suction unit's own power, based on a counter-pressure in three filter blocks, individually timed. The design achieves highly efficient filter cleaning even during continuous operation.



Up to 125mm hose can be used as suction hose and the unit can be connected as a central vacuum unit to a central vacuum line of up to 152mm, depending on the power option.



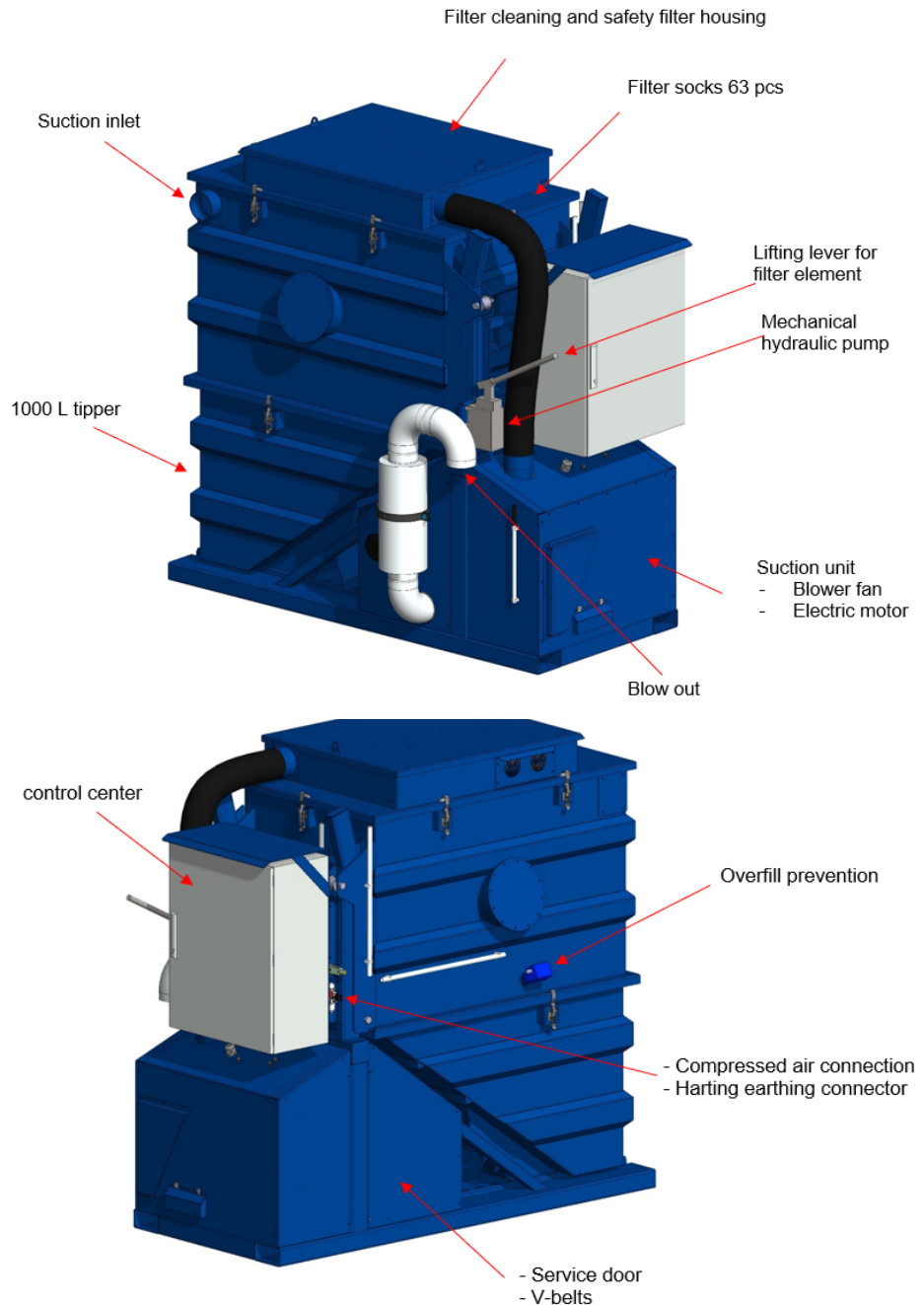
The unit has 63 hose filters, with a total surface area of 20m².



The waste container is a 1000 l tipper, which is very easy to empty with a forklift. In this case, the top of the unit is lifted hydraulically and the tipper is taken out by forklift truck. The whole unit can also be moved by means of a forklift truck.



The unit can also be equipped with an ATEX certified pressure relief membrane or flameless vent if the unit is used to extract potentially explosive dust. In addition, the equipment may be equipped with a fire extinguishing system.



TECHNICAL DATA FOR MODELS 22-55 KW

NOTE! Not for aggregate use.

Engine power 22 kW	Engine power 30 kW	Engine power 37 kW	Engine power 45kW	Engine power 55kW
Max underpressure 500 mbar	Max underpressure 500 mbar	Max underpressure 500 mbar	Max underpressure 500 mbar	Max underpressure 500 mbar
Air volume (at 200 mbar working pressure) 1380 m ³ / h	Air volume (at 200 mbar working pressure) 1680 m ³ / h	Air volume (at 200 mbar working pressure) 1800 m ³ / h	Air volume (at 200 mbar working pressure) 2100 m ³ / h	Air volume (at 200 mbar working pressure) 2250 m ³ / h
Adjusted operating pressure 450 mbar	Adjusted operating pressure 450 mbar	Adjusted operating pressure 450 mbar	Adjusted operating pressure 450 mbar	Adjusted operating pressure 450 mbar
Suction unit Robuschi 85 rotary piston blower	Suction unit Robuschi 85 rotary piston blower	Suction unit Robuschi 85 rotary piston blower	Suction unit Robuschi 85 rotary piston blower	Suction unit Robuschi 85 rotary piston blower
Size of filters 1000 x 110 mm	Size of filters 1000 x 110 mm	Size of filters 1000 x 110 mm	Size of filters 1000 x 110 mm	Size of filters 1000 x 110 mm
Surface treatment stress class c3	Surface treatment stress class c3	Surface treatment stress class c3	Surface treatment stress class c3	Surface treatment stress class c3
Feed-in electricity 400V / 63A	Feed-in electricity 400V / 63A	Feed-in electricity 400V / 125A	Feed-in electricity 400V / 125A	Feed-in electricity 400V / 125A
Length 2710 mm	Length 2710 mm	Length 2710 mm	Length 2710 mm	Length 2710 mm
Width 1560 mm	Width 1560 mm	Width 1560 mm	Width 1560 mm	Width 1560 mm
Height 2560 mm	Height 2560 mm	Height 2560 mm	Height 2560 mm	Height 2560 mm

THE DIMENSIONS AND UNLADEN WEIGHT OF THE EQUIPMENT MAY VARY DEPENDING ON THE MODEL AND EQUIPMENT. WEIGHT 2300-2700 KG.



Suomen
IMURIKESKUS

www.suomenimurikeskus.fi